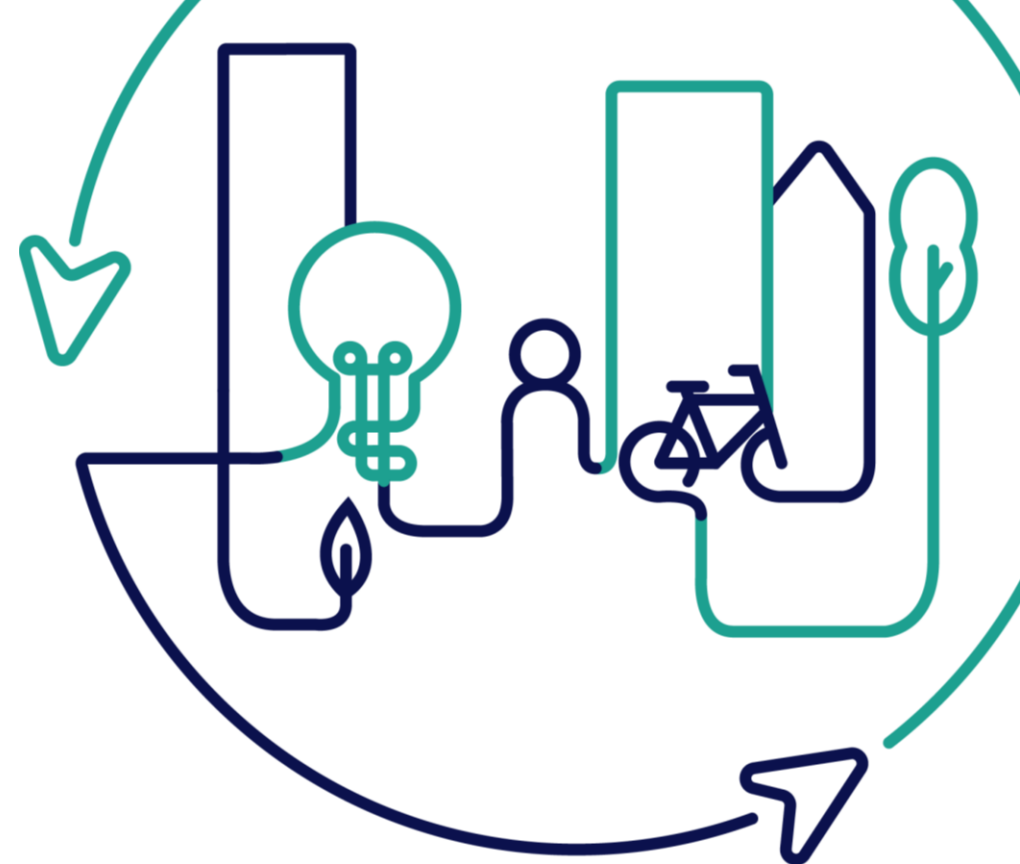


EUROPEAN U R B A N INITIATIVE



Co-funded by
the European Union

The diagram consists of two circular arrows forming a loop. The top arrow is teal and points clockwise from the bottom question to the top question. The bottom arrow is dark blue and points clockwise from the top question to the bottom question. Both arrows have a horizontal line extending from their ends towards the right side of the image.

**Our challenge for
Today?**

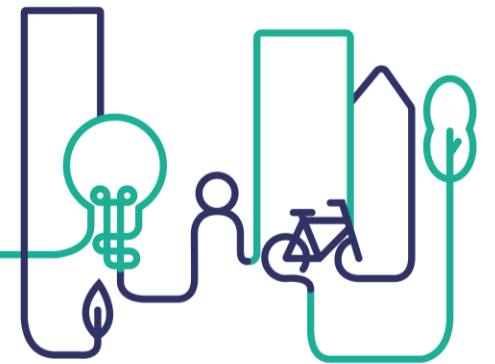
**How do we deliver
adaptive reuse projects
in Irish contexts,
overcoming constraints
and challenges?**

11:30 – 12:30

PANEL DISCUSSION:

From Barriers to Bridges: Adaptive Reuse for a Shared Future - Lessons from THRIVE Implementation

Moderated by: Eleni Feleki, EUI Expert, Event Co-Designer



Co-funded by
the European Union



Panel discussion

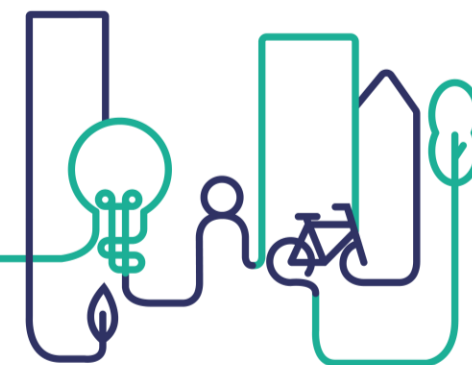
From Barriers to Bridges: Adaptive Reuse for a Shared Future - Lessons from THRIVE Implementation

26-27 NOVEMBER 2025, MONAGHAN, IRELAND

Lessons from THRIVE Implementation

Moderated by Eleni Feleki (EUI Expert) and including:

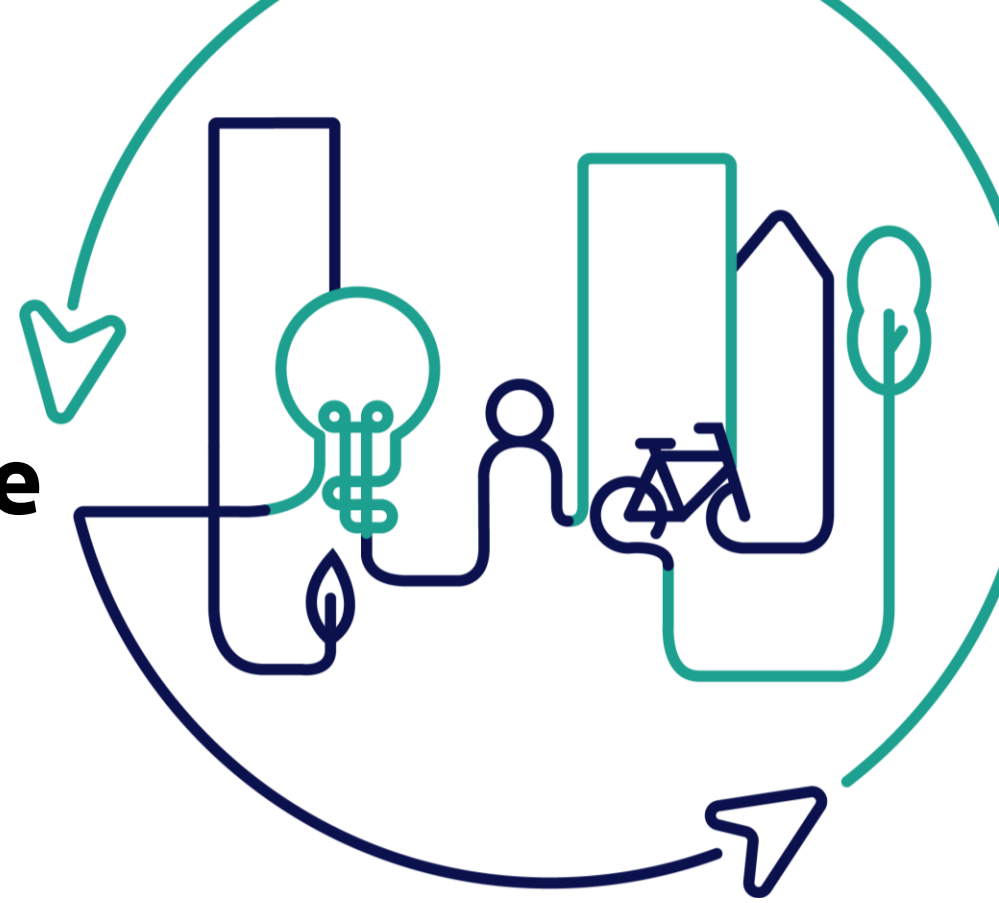
- Tatiana Coelho de Oliveira, Policy Assistant, DG REGIO
- Nicola Matthews, National Contact Point for the New European Bauhaus
- Elizabeth Hore, Director of Service/THRIVE PM, Wexford County Council
- John McGrath, Senior Engineer/THRIVE PM, Meath County Council
- Matthew Partridge, Senior Executive Architect, Waterford City & County Council



Co-funded by
the European Union

THRIVE project: Navan Cultural Quarter - Community Hub & County Archive

John McGrath
Meath County Council



Co-funded by
the European Union

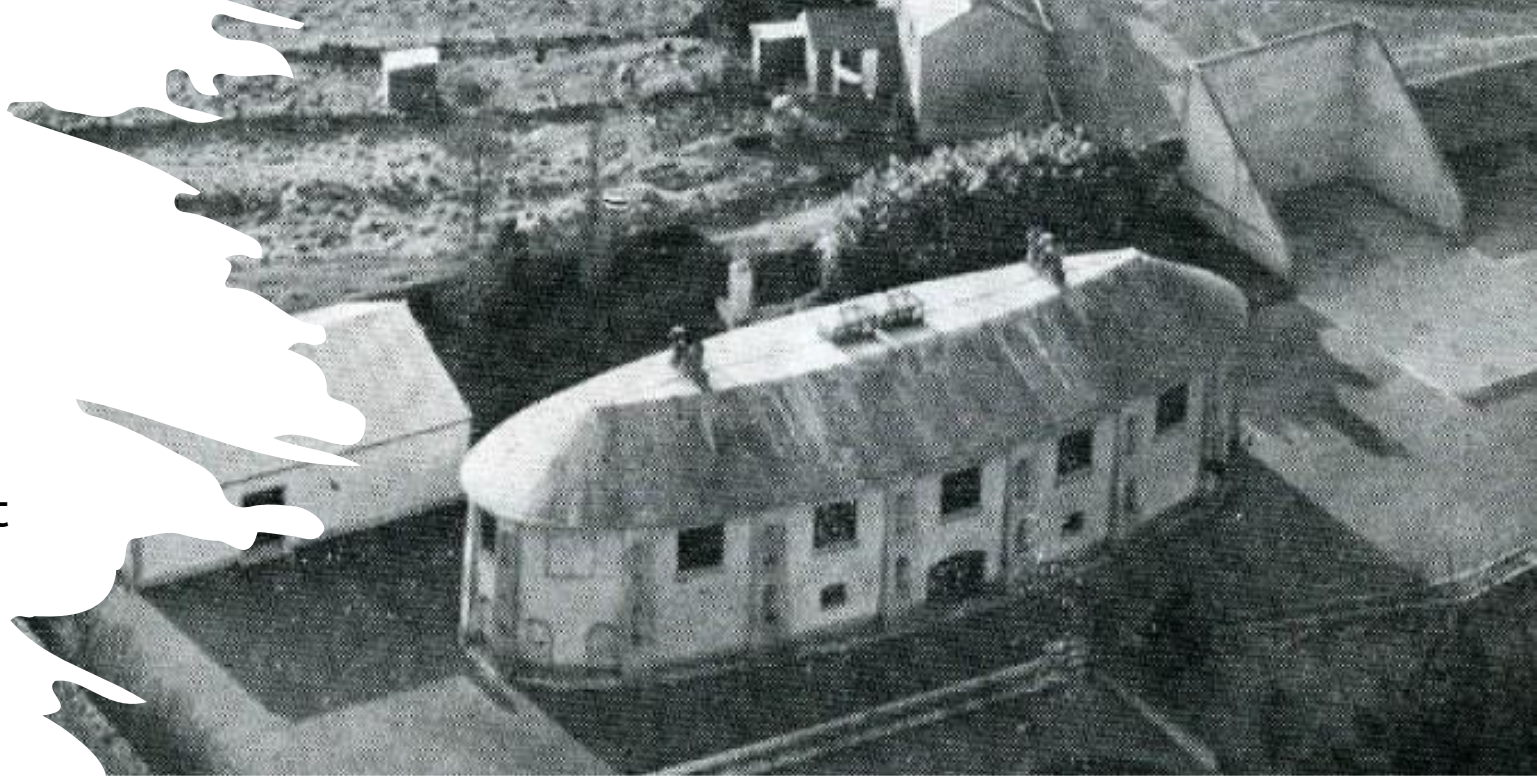


Project Overview

- Transformative conservation and adaptive re-use of the former St Finian's Seminary Hall.
- Creation of a multi-purpose Community Hub and County Archive with associated public realm enhancement.
- This project is co-funded by the Government of Ireland and the European Union through the ERDF Southern, Eastern and Midland Regional Programme 2021-2027.

Project History

- **1857 -1908:** Designed and constructed as as St Finian's Seminary Study Hall, designed with a unique elliptical footprint
- **1908–1930:** Repurposed for industrial use, notably for drying tobacco.
- **1930-1970:** Home to St Patrick's Classical School.
- **1970- 2005:** Building used for various light industrial uses
- **2005:** Acquired by Navan Urban District Council in a dilapidated condition.
- **2019:**Following Stakeholder Engagement co-created design for the adaptive re-use as County Archive and Community Space



Goals & Objectives

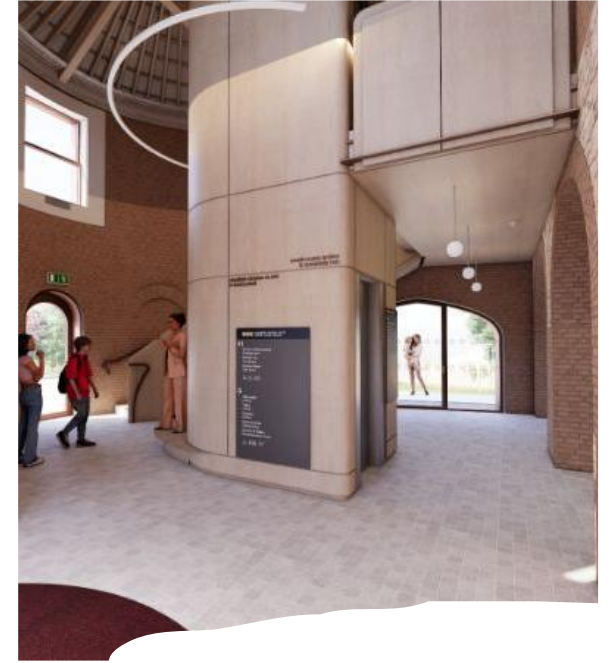
- Preserve heritage through adaptive reuse.
- Provide inclusive cultural and community spaces.
- Enhance public realm and connectivity in Navan.



Benefits

- Revitalizes a derelict site and stimulates economic activity.
- Offers free public access to cultural and archival resources.
- Promotes sustainability and universal & New European Bauhaus design principles.





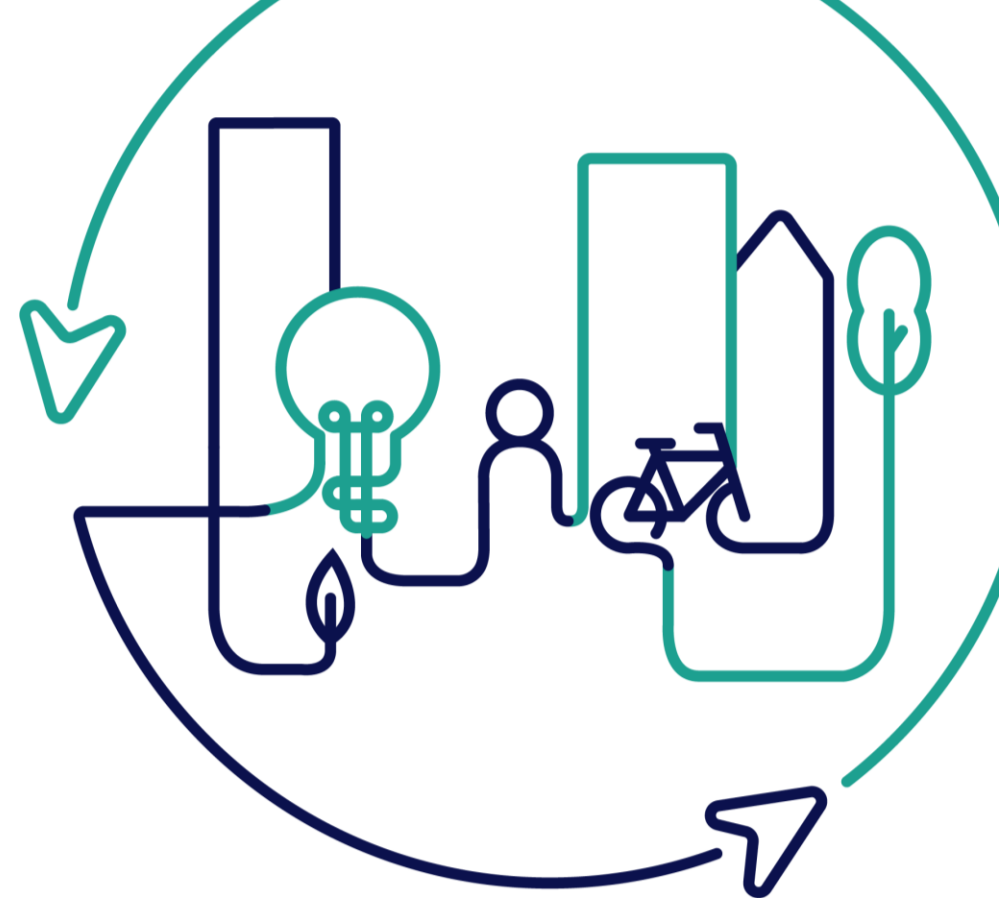
Design Highlights



Design Highlights

THRIVE project: Gorey Market House

Elizabeth Hore
Wexford County Council



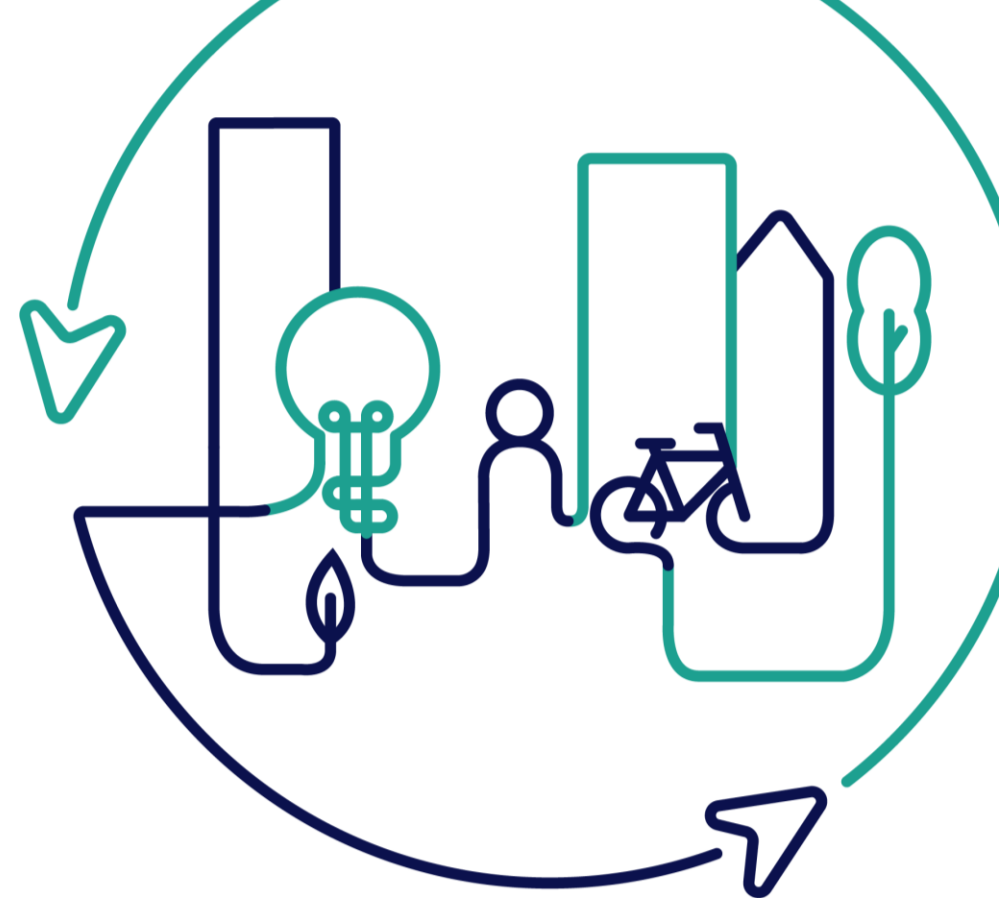
Co-funded by
the European Union



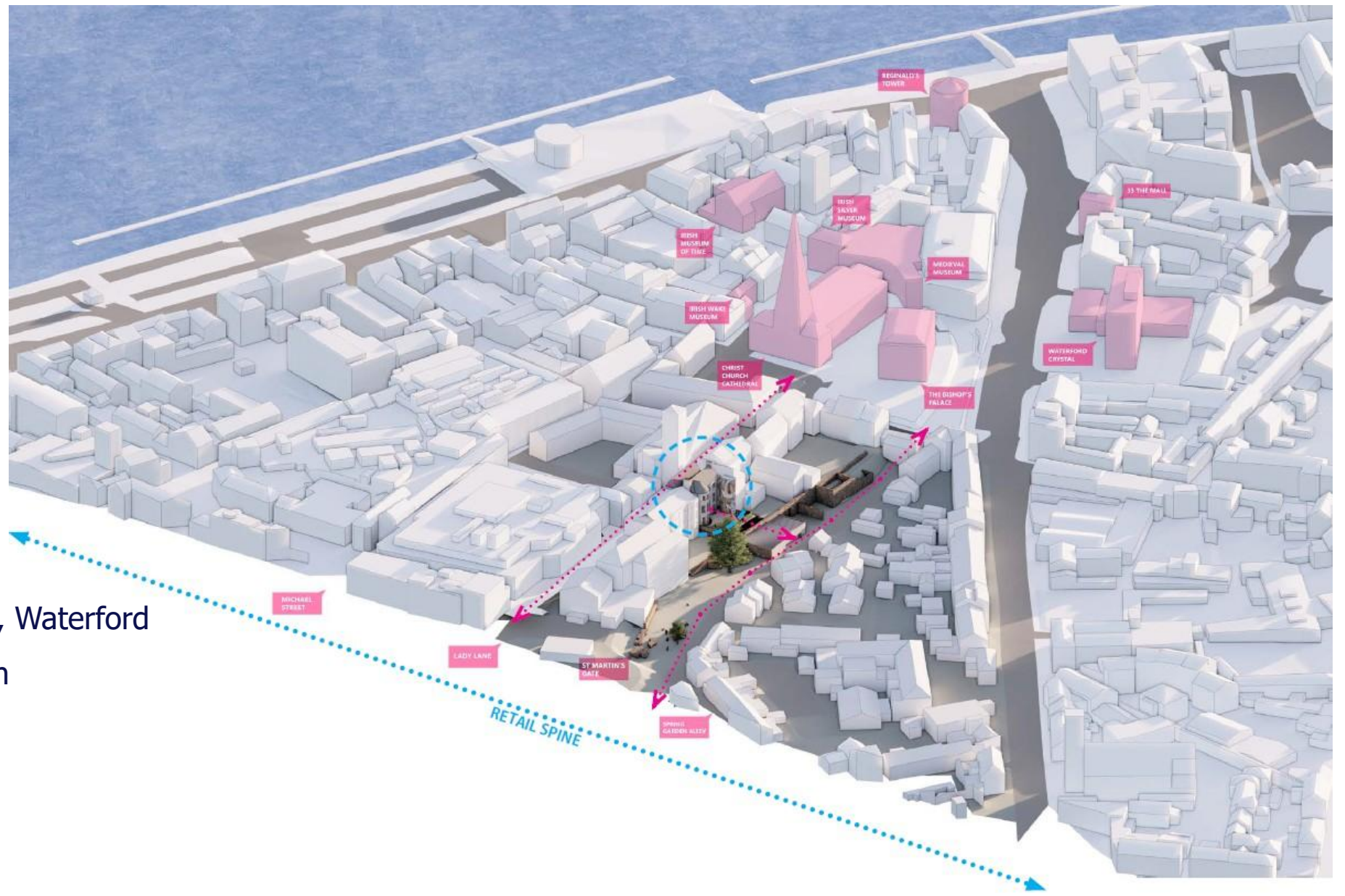
GOREY MARKET VIDEO

**Tir na nOg, 18 Lady Lane,
Waterford**

Matthew Partridge
Waterford City & County
Council



Co-funded by
the European Union



- The Viking Triangle, Waterford
- City Centre Location
- Public Realm
- Connectivity

➤ **Tir na nOg, 18 Lady Lane, Waterford;** Context

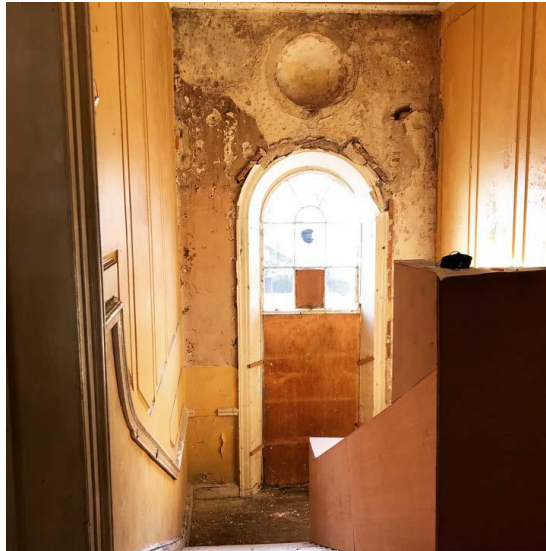
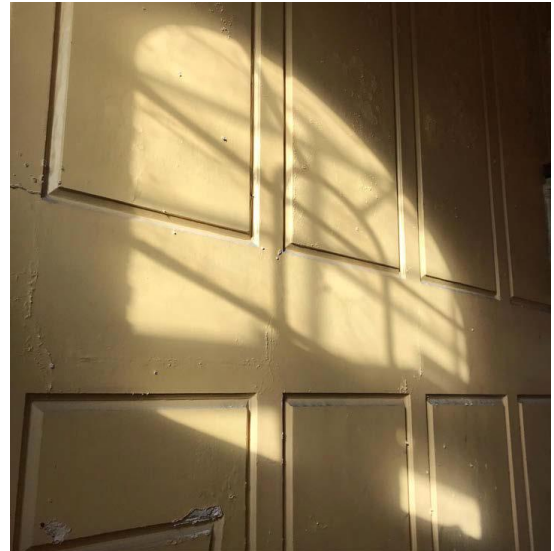
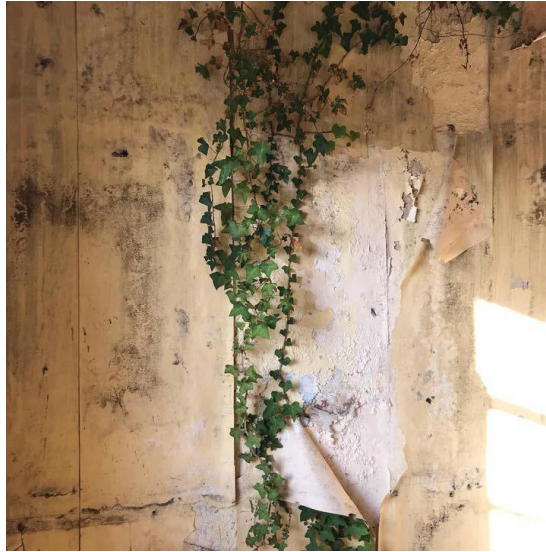


- Dated c.1740, Original Merchants House, in ACA
- Substantial Building of National Importance
- Extended and Reconfigured c.1975 for Use as Mens Hostel
- **Tir na nOg, 18 Lady Lane, Waterford;** Context



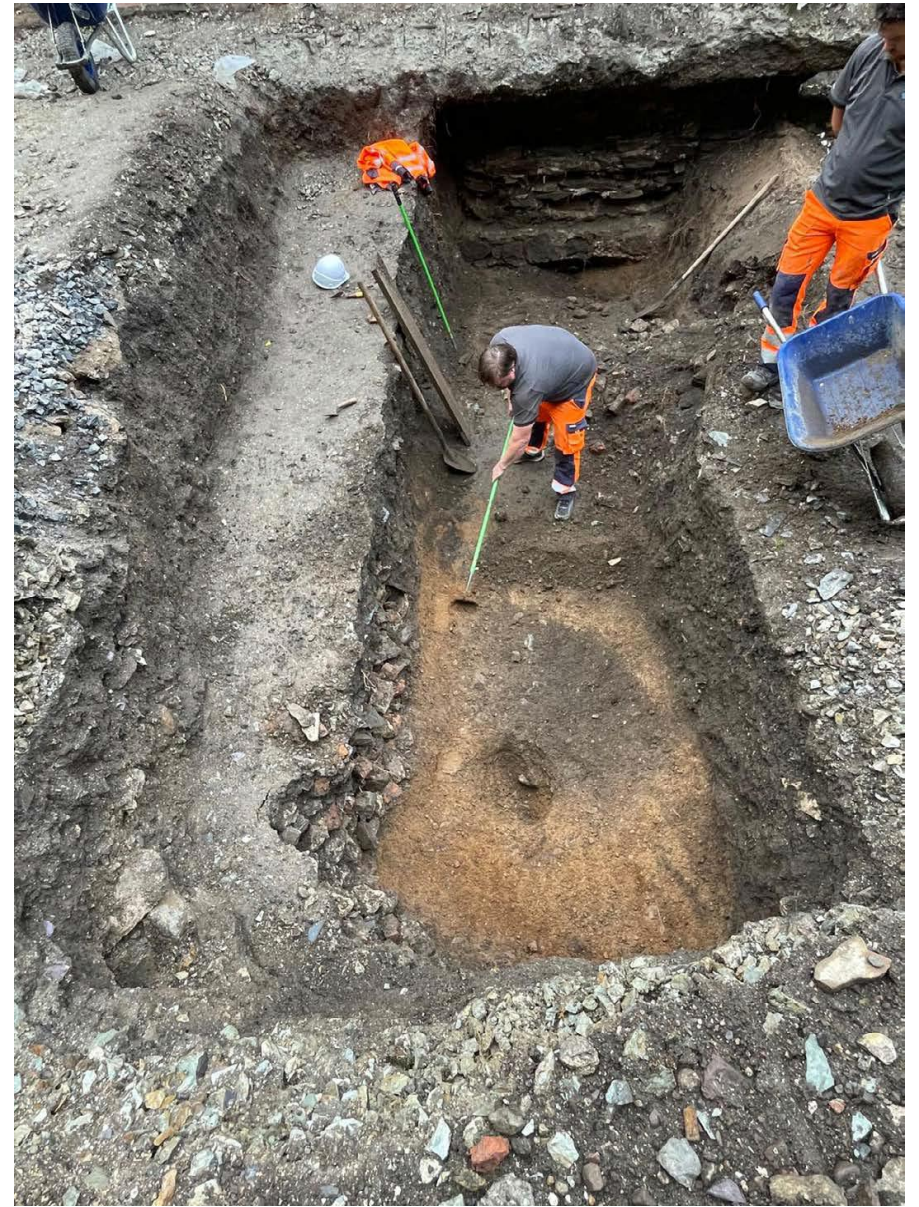
- Building & Site Section
- Accessibility / Circulation
- Archaeology
- Medieval City Wall
- Conservation / Adaptation
- Intervention / New Build

➤ **Tir na nOg, 18 Lady Lane, Waterford;** Building Adaptation, Accessibility, Regulatory Compliance



➤ **Tir na nOg, 18 Lady Lane, Waterford;** Conservation of Interior Fabric

- Archaeology
- Site Constraints
- Demolition Works



- **Tir na nOg, 18 Lady Lane, Waterford; Archaeology**

- Elevated Site
- Relation to City Wall
- Looking Out / Looking In
- Spring Garden Alley



- **Tir na nOg, 18 Lady Lane, Waterford;** Proposed Elevation over Spring Garden Alley

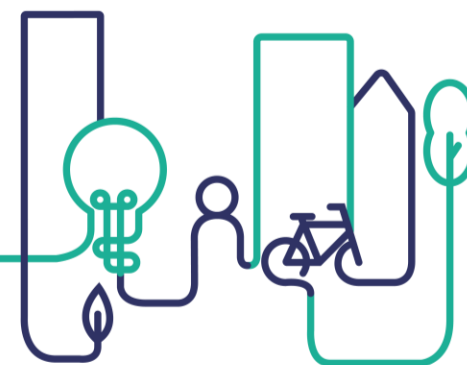
From Barriers to Bridges: Adaptive Reuse for a Shared Future - Lessons from THRIVE Implementation

26-27 NOVEMBER 2025, MONAGHAN, IRELAND

Lessons from THRIVE Implementation

Moderated by Eleni Feleki (EUI Expert) and including:

- Tatiana Coelho de Oliveira, Policy Assistant, DG REGIO
- Nicola Matthews, National Contact Point for the New European Bauhaus
- Elizabeth Hore, Director of Service/THRIVE PM, Wexford County Council
- John McGrath, Senior Engineer/THRIVE PM, Meath County Council
- Matthew Partridge, Senior Executive Architect, Waterford City & County Council



Co-funded by
the European Union



Thank you!

**From Barriers to Bridges: Adaptive
Reuse for a Shared Future - Lessons
from THRIVE Implementation**

**An EUI capacity building event in Ireland
Monaghan, 26-27 November 2025**