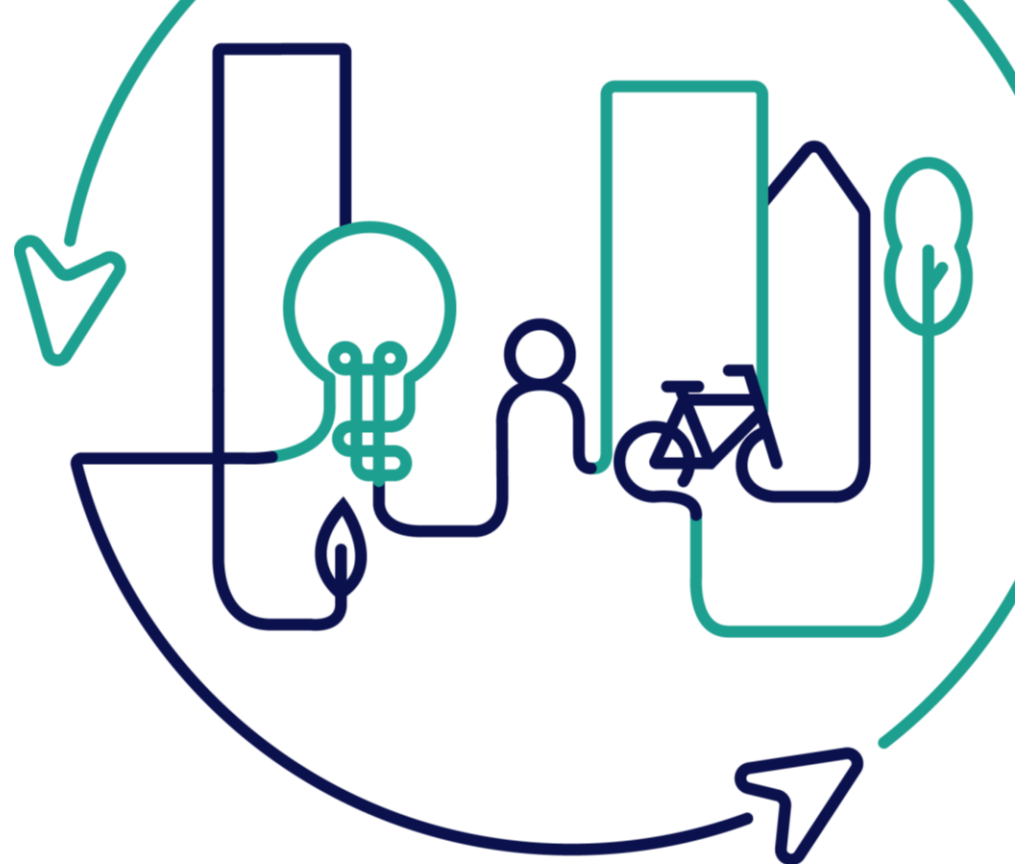


EUROPEAN U R B A N INITIATIVE



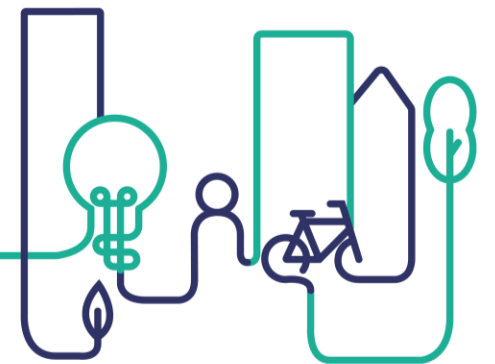
Co-funded by
the European Union

Parallel Workshops: Design & Delivery - Technical Solutions for Creative Regeneration

Wednesday 26th November 2025 – 14.00 to 15.30

Facilitated by Brian Marrinan

Case Studies: Center Rog, Ljubljana / McKee Barracks, Dublin



Co-funded by
the European Union



Session Aims

1

To understand the technical challenges facing 2 regeneration projects: Center Rog, Ljubljana and McKee Barracks, Dublin

2

To discuss in groups those technical challenges and co-produce potential solutions

3

To share the potential solutions with the two regeneration projects and discuss what happened in reality

4

To apply learning to your local contexts in Ireland



Session Plan

14:00

Introduction

14:05

**Case Study Presentations
(Challenges)**

14:25

Group Activity

15:05

Feedback and Discussion

15:20

Case Study Response

15:30

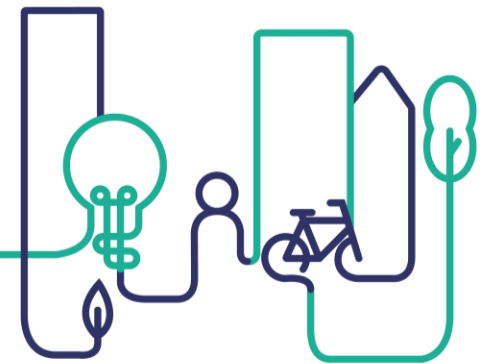
Wrap Up



**Let's hear
from Renata**

Centre Rog, Ljubljana

Renata Zamida, Director General, Centre Rog



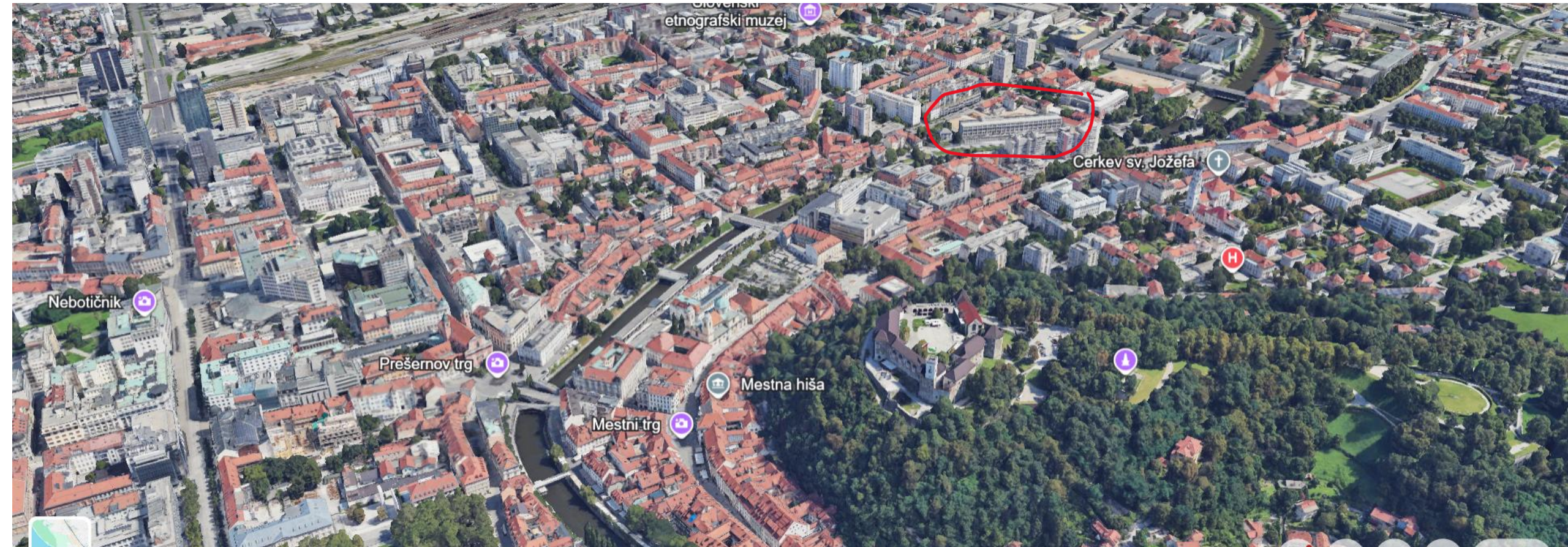
Co-funded by
the European Union



CENTER ROG

A TRANSFORMATION FROM A FACTORY TO A CREATIVE CENTRE

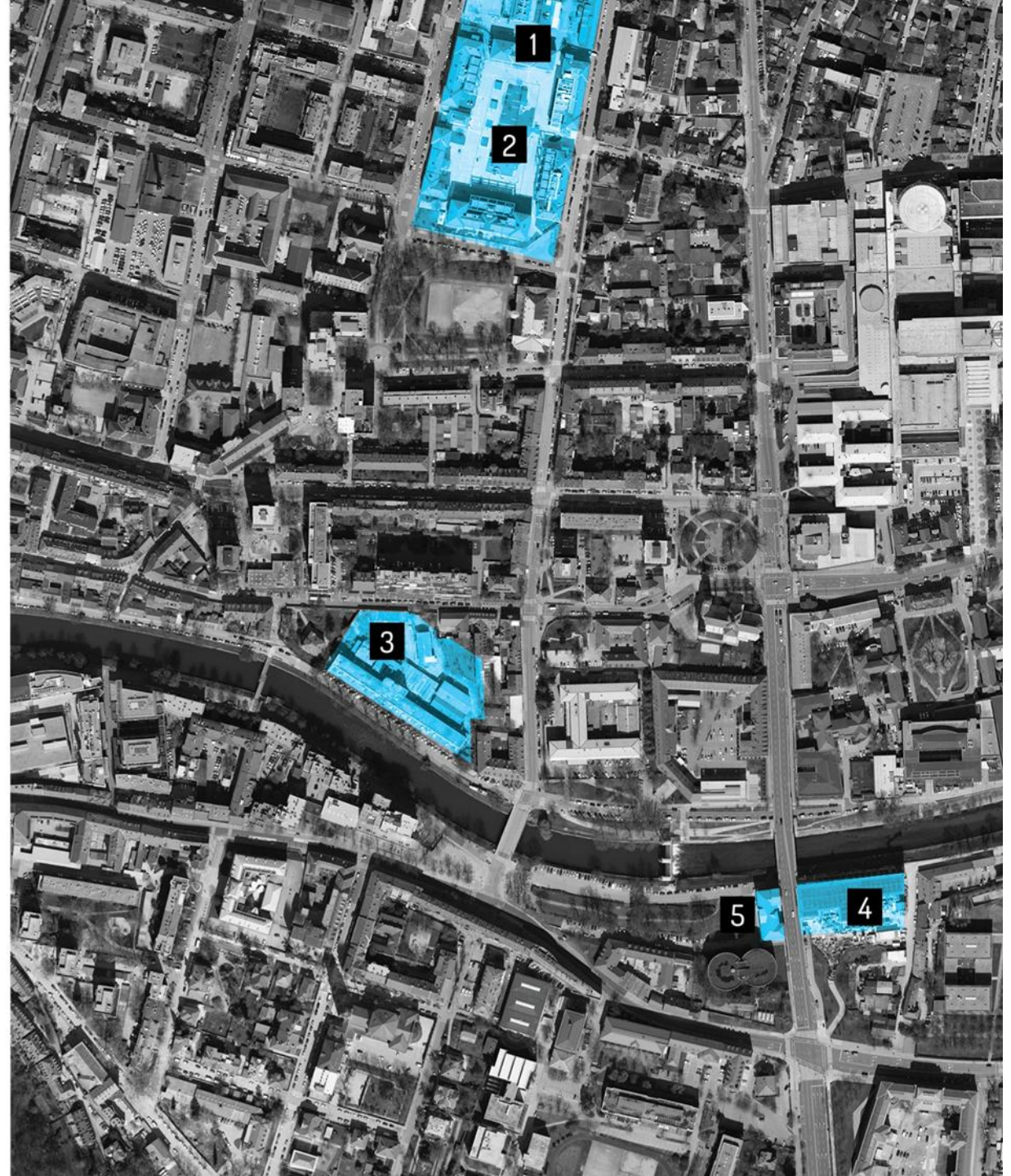
LJUBLJANA



The riverbank connects the old city center with the Rog area and the new Cukrarna contemporary arts gallery, completed in 2021.

The Ljubljana river embankment was renovated at the same time as the Rog factory, and transformed into a pedestrian area.

- (1) Metelkova community /cultural complex
- (2) Museum quarter
- (3) Center Rog
- (4) Cukrarna Gallery
- (5) Cukrarna Palace (youth center, under construction, opening 2026)





The factory building retains its original function and is being modernized for the 21st century.

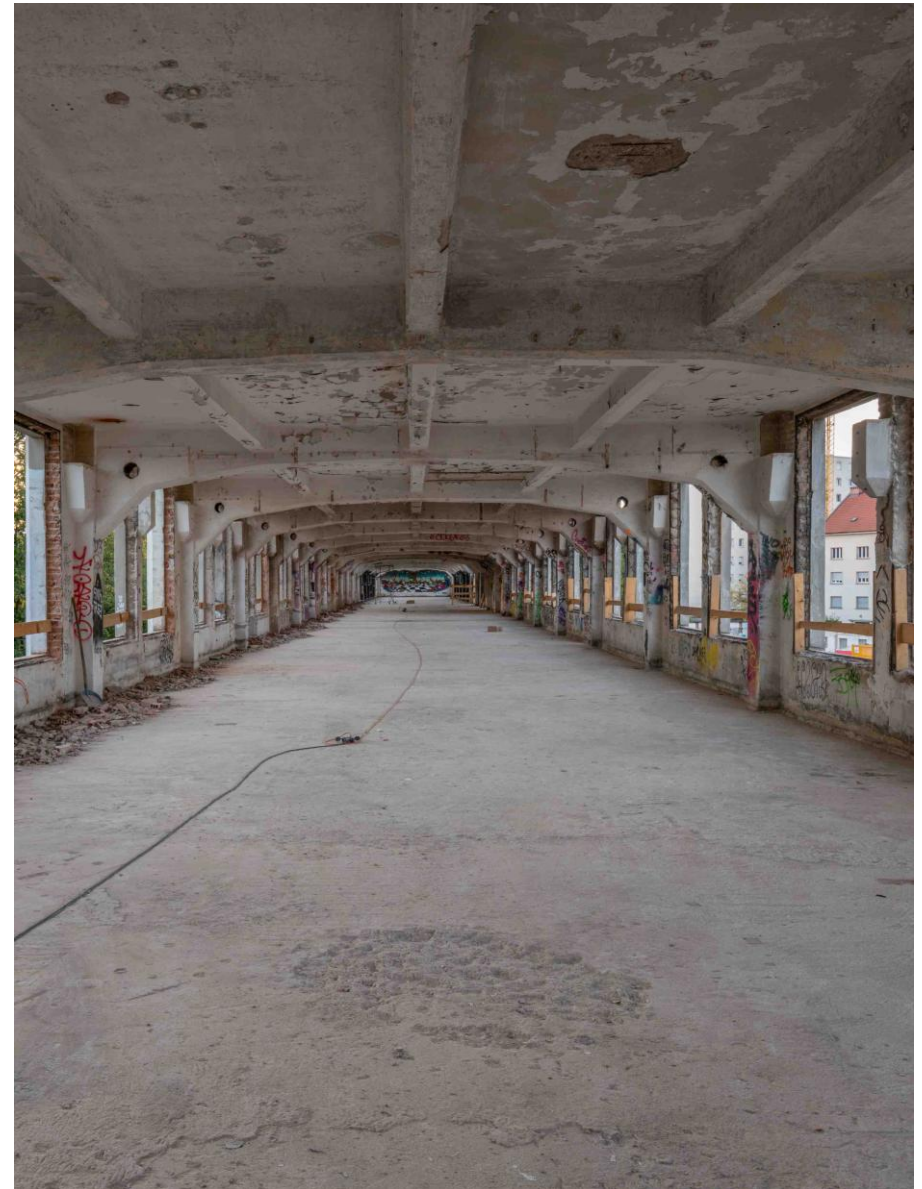




1955



2022

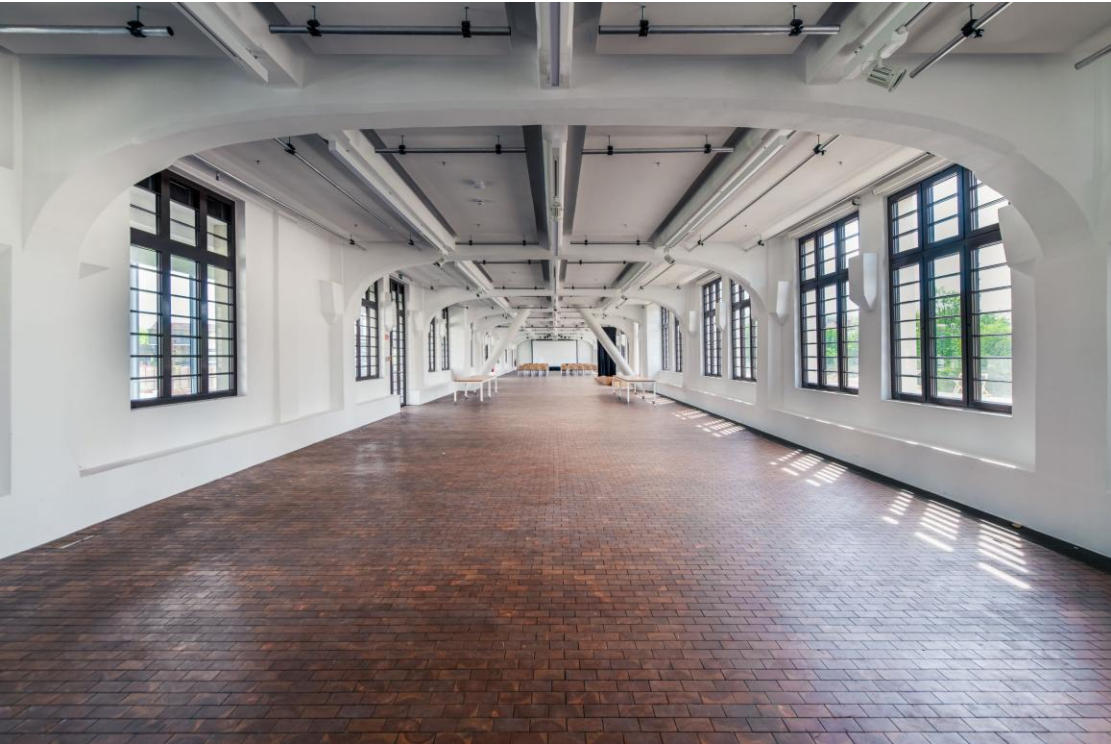


1ST FLOOR – THE PRODUCTION HALL

1955



2024





Challenges

- Industrial AND cultural heritage (strict heritage protection rules)
- The factory yard (8.000 m², underground garage)
- Poor structural / static condition of the building
- Connecting northern (park) and southern (riverbank) side



RENATA ZAMIDA,
Director General

RENATA.ZAMIDA@CENTER-ROG.SI

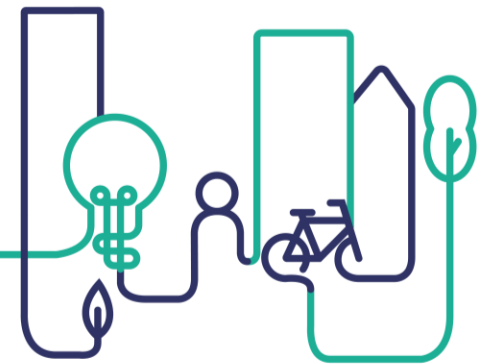
WWW.CENTER-ROG.SI/EN



**Let's hear
from Eamon &
Shane**

McKee Barracks

Eamon McCarney, Taylor McCarney Architects
Shane Nolan, Nolans Group



Co-funded by
the European Union

Marlborough - McKee

- Marlborough Barracks 1891
- Plans prepared by the Royal Engineers Department of the British Army under the supervision of Robert Barklie
- Handed over to Irish forces in 1926.
- Named after Richard McKee who was shot on Bloody Sunday in 1920.



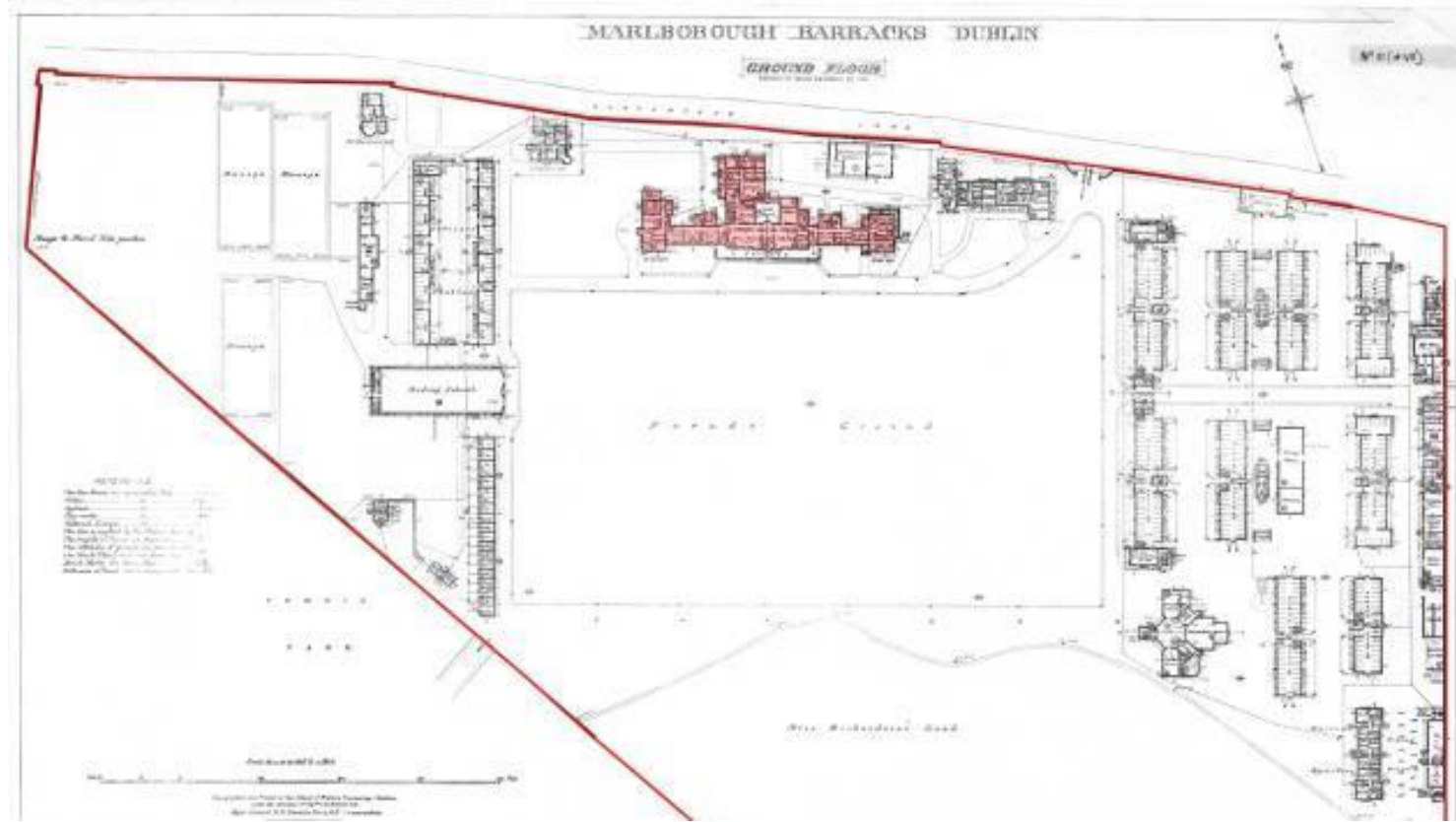
Postcard circa 1920's
Source: National Library of Ireland



Postcard circa 1920's
Source: National Library of Ireland

Contrast with Regional Barracks

The architectural language and materials used at McKee Barracks are highly decorative, detailed and contrasts with more regional Barracks

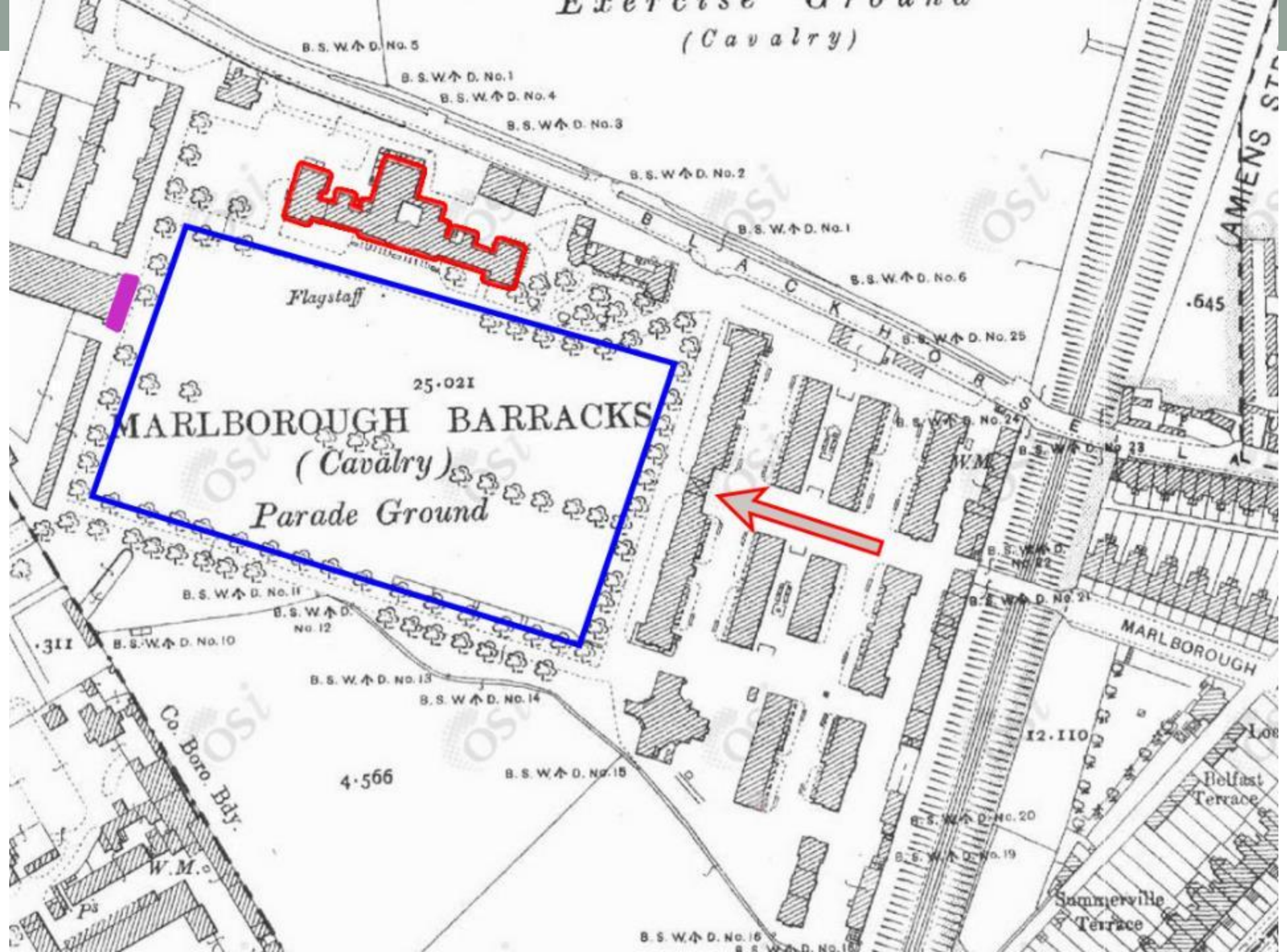


Sarsfield Barracks

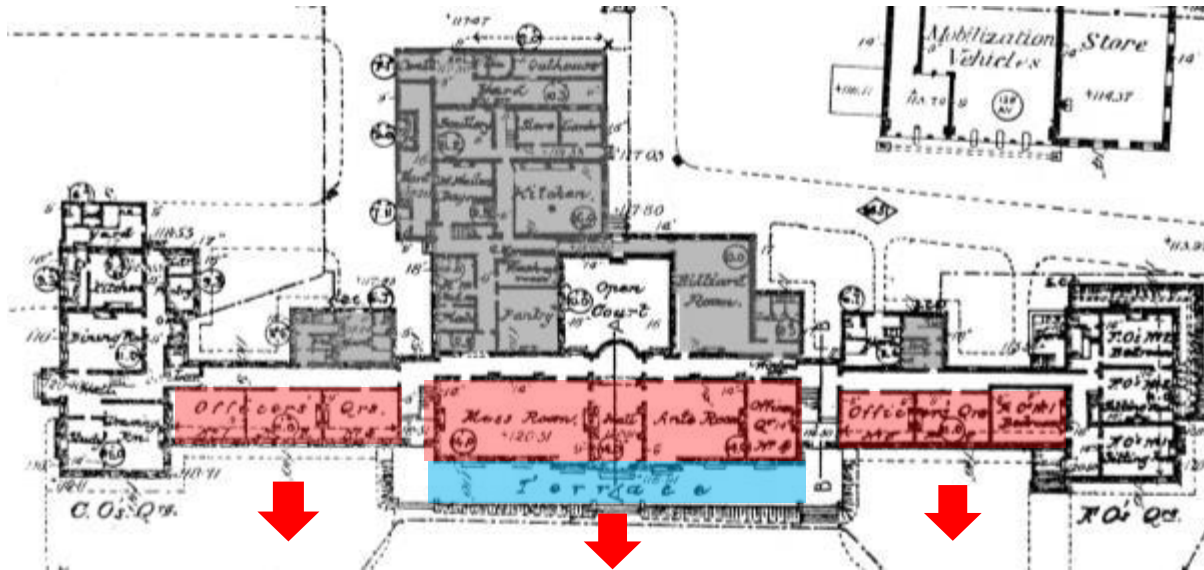
As a comparison
Sarsfield Barracks has
architectural symmetry
and defensive elements.



Exercise Ground
(Cavalry)



Building Layout



- Asymmetrical north façade reflects support spaces, billards room, kitchen, etc.
- Formal symmetry of the southern façade of the building
- Relationship between the building and the formal cavalry presentation

Front Elevation



Designed as a French chateau opening out onto a veranda the building does not utilise 'defensive architectural' language.

Central Breakfront

- Barracks constructed as part of the British Empire infrastructure.
- The building utilises classical language in its composition
- Two types of brick are utilised:
 - Extruded brick
 - Hand moulded 'red rubber' brick for decorative elements



CAVALRY BARRACKS, CRANGEGORMAN, DUBLIN.

No 20

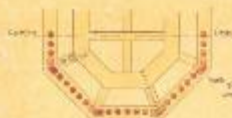
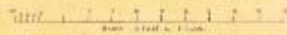
Officers' Quarters and Mess.



Details of Fleche.

Half high Scale and Full Size.

Note: To be entirely covered with Zinc.

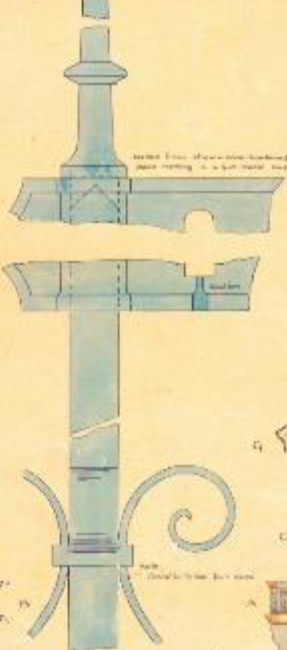


Plan on line A.B.

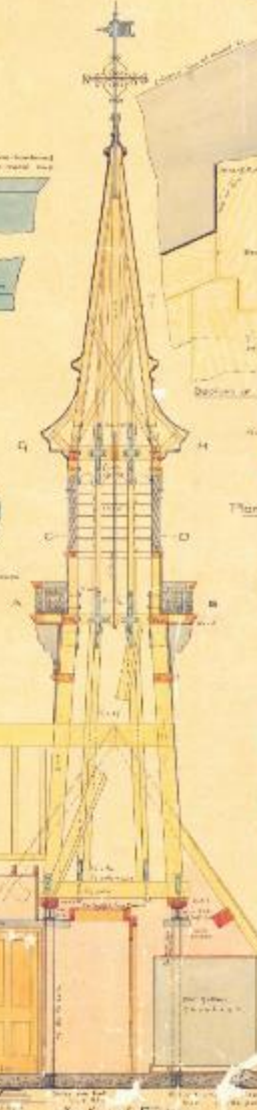
Showing trussing in section.



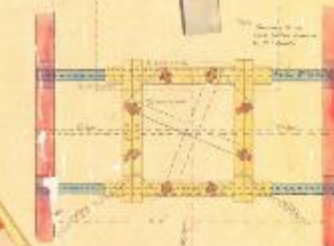
Plan on line C.D.



Detail of Vane. Note.



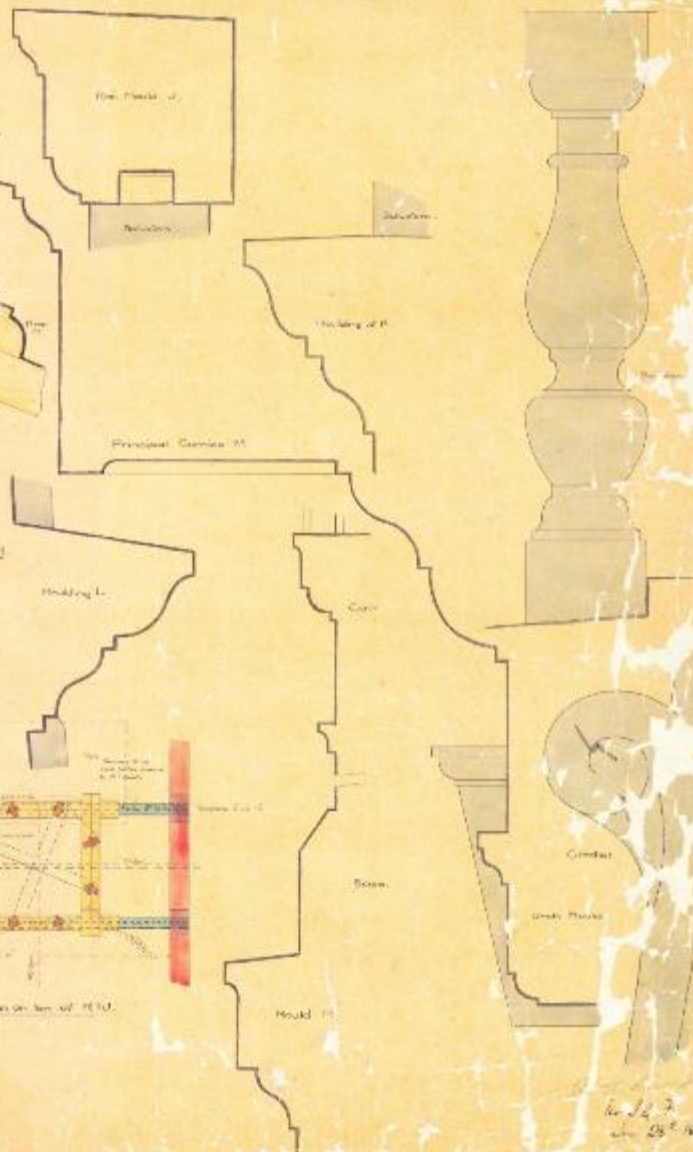
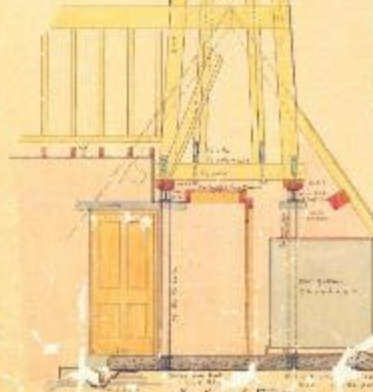
Plan of Trussing of G.H.



Plan on line of R.S.T.



Plan of Main Roof



1877
1878

Flèche - Existing



A flèche (from the French for arrow) is a metal-covered timber spire, or spirelet.

The deteriorated existing zinc work was removed and brought to a workshop allowing the timber structure to be inspected and repaired.



Hand Carving of Brick Scrolls

The ornate carvings of the central bay, are formed in a red rubber brick. Following testing of the brickwork, we sourced original clay deposits in the south of England. The red rubber bricks were then hand carved to integrate and complete the remaining building fabric and detail.

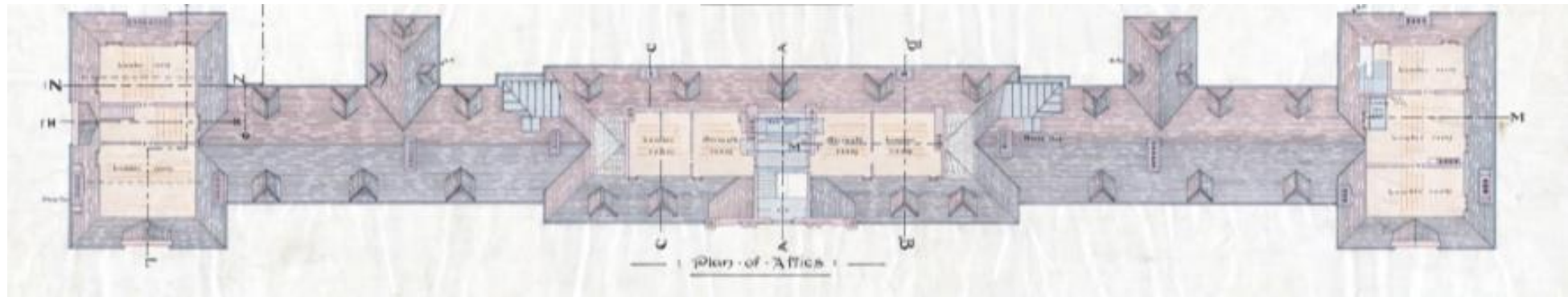


ROOFSCAPE

Roof Tiles, Flèche, Lanterns, Chimneys and Dormer Windows

Roof

Original clay tiles had reached the end of their life span – splitting due to frost damage













Roof Lanterns - Existing



The modern PVC roof lights were leaking and in poor condition.

Chimneys



Modern chimney pots were removed

Original sandstone dividers were reinstated

The original drawings and original dividers on neighbouring buildings were used to recreate the profile







Windows



Window 15 prior to any restoration works being carried out.

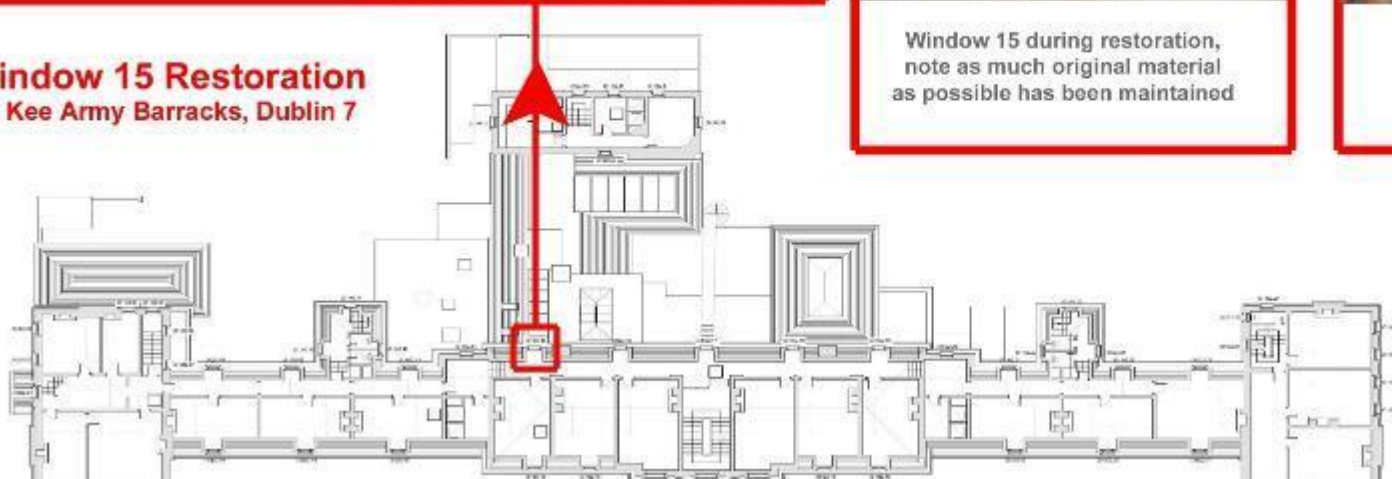


Window 15 during restoration, note as much original material as possible has been maintained



Window 15 after restoration and returned to its original location

Window 15 Restoration
Mc Kee Army Barracks, Dublin 7



FAÇADE

Details of South Facade



Terracotta panels



Terracotta details

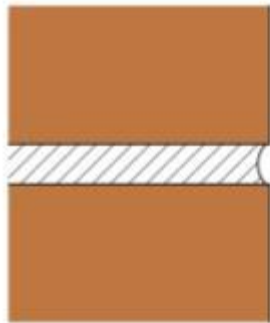


Brick scrolls above door

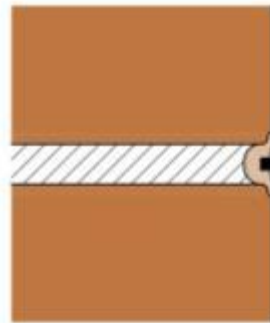
Decorative Details



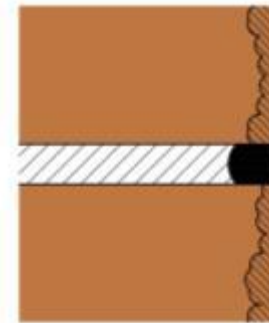
Brick Joints



Original Lime based joint black (burnt ash)



Surface black tuck joint to achieve narrow clean line and regular brick edge



Modern cement joint to lower areas of the building causing brick deterioration
Moisture gets trapped within brick and harder 'firing skin' is lost through cycles of frost action



Original narrow red mortar joint in the decorative columns and panels to emphasize the brick detail and decrease the visual impact of the joint



Terracotta Panels

Replacement terracotta panels utilised only where all detail was lost to frost damage



Cleaning





**Group
Activity**

CHALLENGE CANVAS

HOW DOES IT WORK

- Based upon the presentations of Centre Rog and McKee Barracks, detail on the Challenge Canvas:
 - **Step 1** – select a core technical challenge and dig deeply into ensuring you understand that challenge from all its angles.
 - **Step 2** – consider potential solutions to the challenge
 - **Step 3** – explore how you would transfer the solution to your own contexts

DAY 1

STEP 1
UNDERSTANDING THE CHALLENGE AND SHARING EXPERIENCE

- What is the core challenge?
- What is contributing to this challenge?
- Have you faced a similar situation?

STEP 2
ADDRESSING THE CHALLENGE

- How would you address the challenge?
- Which resources, actors, policies might help?
- What barriers might you face?
- What good practices are you aware of?

STEP 3
TRANSFERRING THE SOLUTIONS

- What would work in your local context?
- What wouldn't work?
- What could you change to make that work?
- Who would need to be involved?

McKee Barracks
Dublin

Deeply understand **THE CHALLENGE**

What are the **POSSIBLE SOLUTIONS?**

What are the **BARRIERS AND ENABLERS** for transfer?

Centre Rog
Ljubljana's Creative Hub

Deeply understand **THE CHALLENGE**

What are the **POSSIBLE SOLUTIONS?**

What are the **BARRIERS AND ENABLERS** for transfer?



THE TWO CHALLENGES

Challenge 1: How do you choose what to do, and what not to do, in a site? How does the nature of the site impact that?

Challenge 2: How do you understand what is needed, and then access, the relevant skills, crafts, and technical abilities required for the project?



Feedback



CHALLENGE CANVAS

- Each Group to feedback on their Challenge Canvas



**Let's hear
from Renata**



**Let's hear
from Eamon
and Shane**





Hand Making of Roof Tiles





Dread

ought

Dread

Dread



























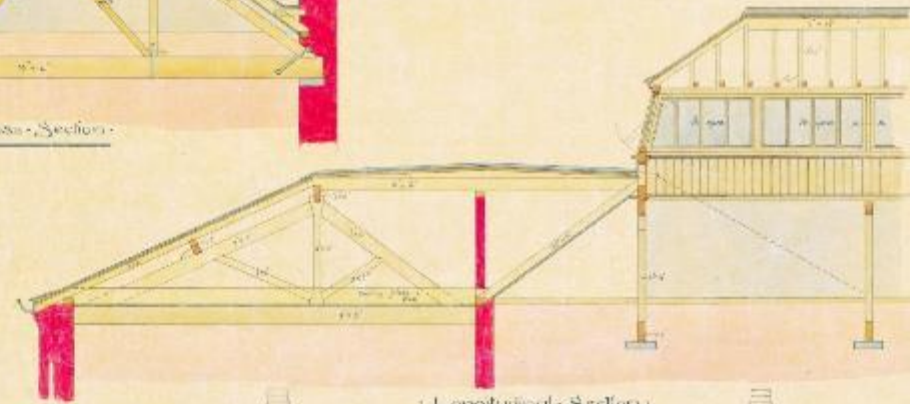
CAVALRY BARRACKS. GRANGEGORMAN. DUBLIN.

No 23.

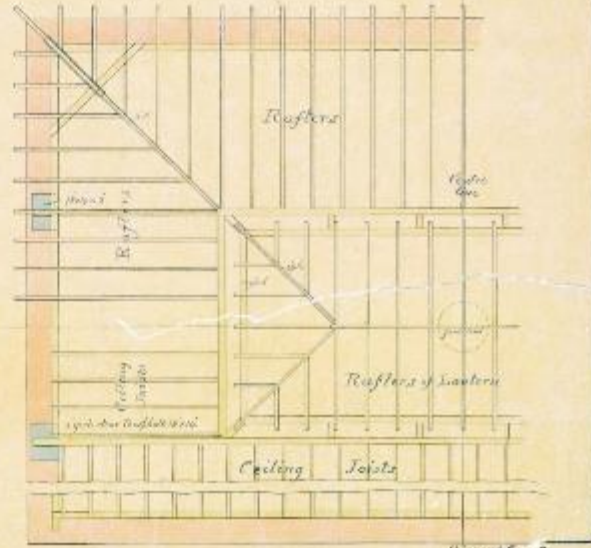
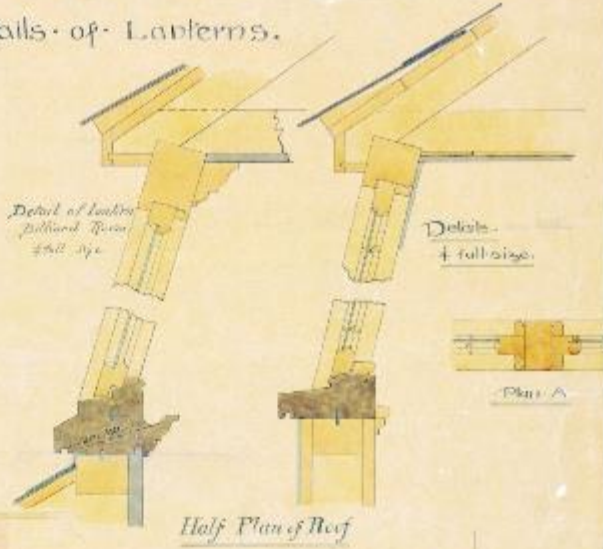
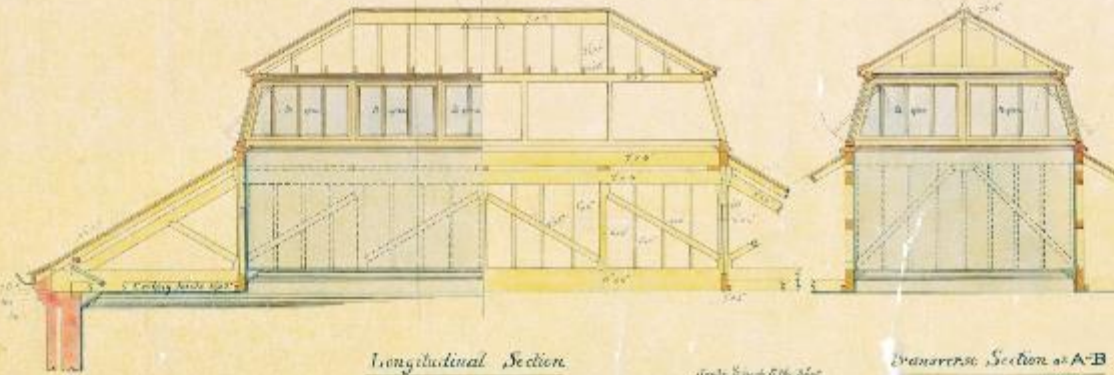
Officers Quarters and Mess. Details of Lanterns.



Details of Lantern in Mess-Kitchen



Details of Lantern in Billiard-Room



No. 23

Wm. J. Smith













Chimneys





Windows

A bespoke 'steam box' was created to soften the putty and paintwork, so that the delicate glass could be removed without damage and protected for reinstatement.

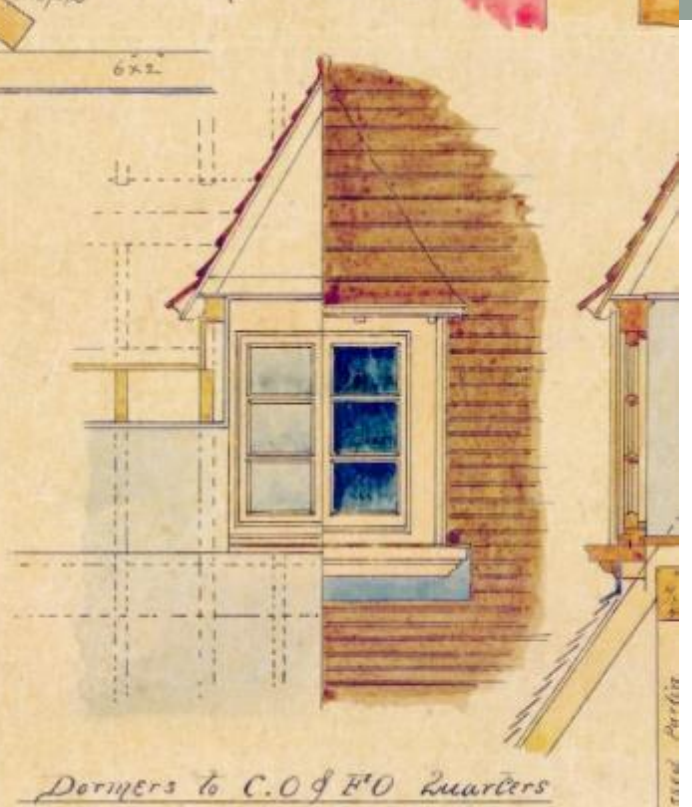
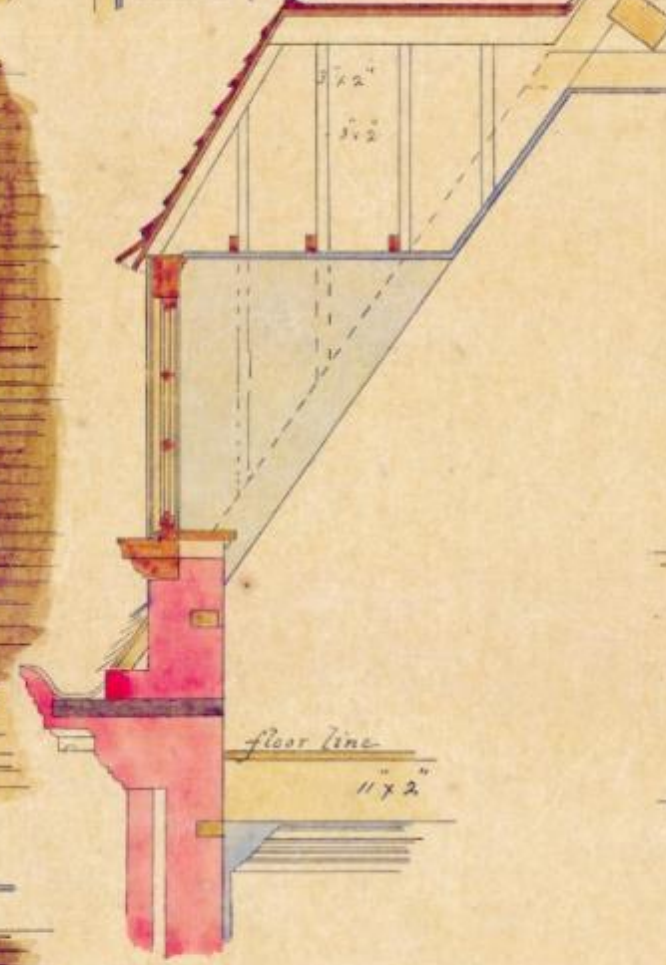
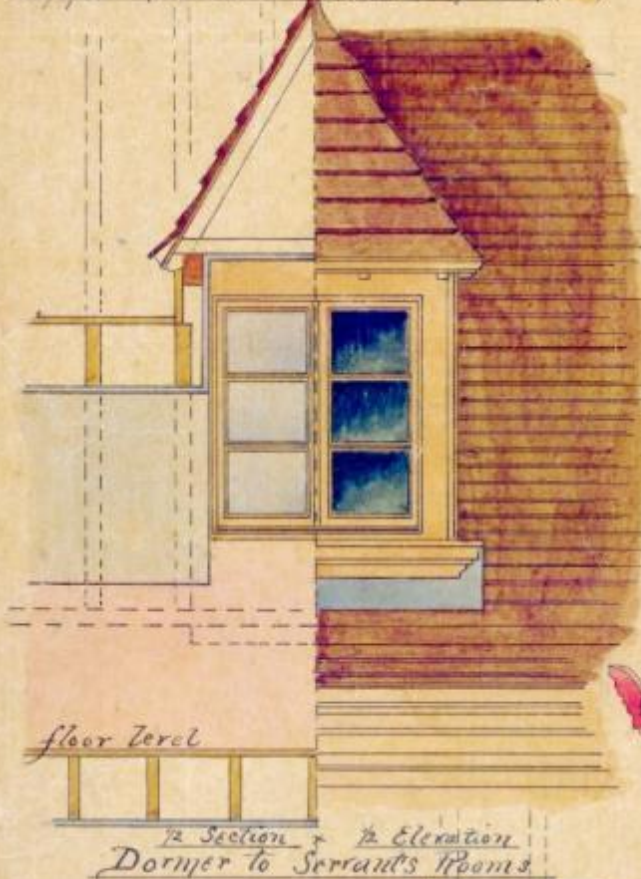
4mm French cylinder glass was utilised to replace any modern glass panels.



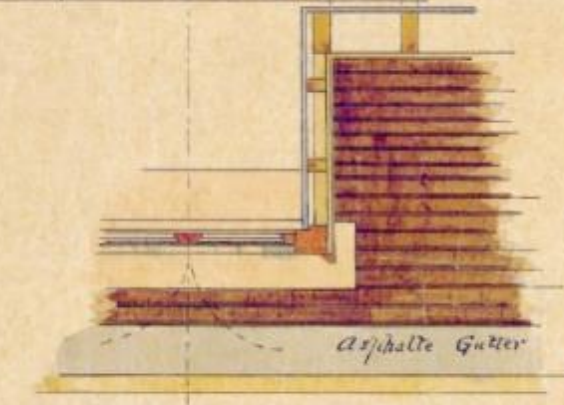
Upper Dormers Central Block

Section of Dormer

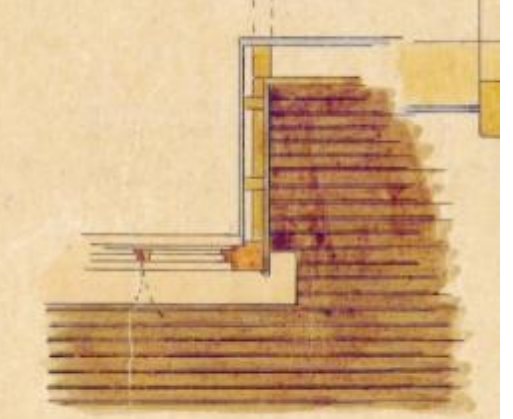
Full Size Door details



Section thro' Dormer



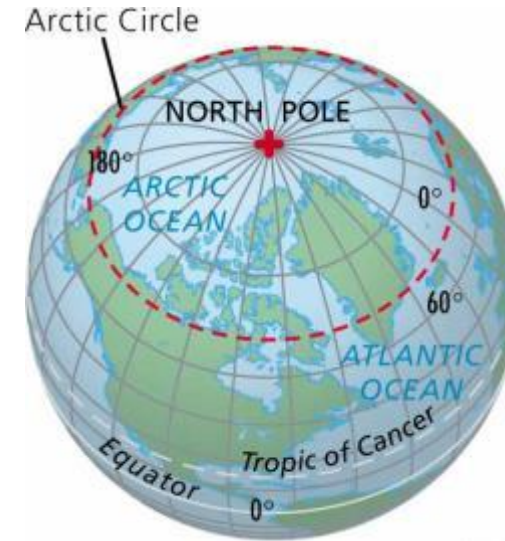
Plan of above Dormer



Plan of above Dormer

Windows

- Investigation of wood type
- Identification of original fabric
- Pitchpine (Douglas fir) most likely from North America



- Harsh conditions for timber
- Very slow growth
- Provides timber with high natural resin content which is resistant to decay
- 10 growth rings per centimetre



Brick Face Restoration



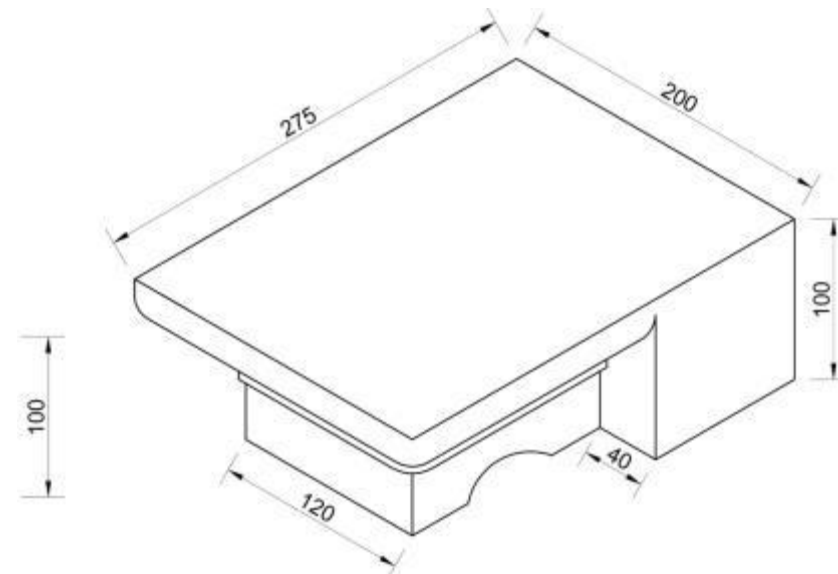






Sandstone Dentils and Eaves

- Pollution by carbon forms a hard surface on the face of the sandstone resulting in loss of material due to frost action.



- Carbon buildup prevents moisture escaping from sandstone
- Cracks and fractures to be repaired











































**Wrap Up
from Brian**



What's next?

15:30

Coffee break

16:00

Site visits

19:00

Drink reception and dinner

ABOUT THE SITE VISITS

- **Your designated site visit group is written on the back of your badge – Please stay with your group**
- **Group 1 Departs 16:00**
- **Group 2 Departs 16:10**
- **Group 3 Departs 16:20**
- **Please provide your reflections at each site – Scan QR code**
- **At the end, a bus will take participants back to the Peace Campus and/or the Westernra, 4 Seasons and Hillgrove Hotels.**



Bus transportation to and from dinner

- **Drinks reception with exhibition of all THRIVE 2 recipients
Dinner at the Hillgrove Hotel at 19:00**
- **Buses will depart from the 4 Seasons Hotel at 18.30 and
18.45 to the Hillgrove**
- **The bus will offer a return service from the Hillgrove to the 4
Seasons at 22:00 and 22:30**

➤ LUNCH & EVENING COFFEE LOCATIONS

Ground Floor

Key

	Main North Entrance		Leibhliothéan Library
	Main South Entrance		Library Outreach Room
	Reception / Information		Community Bookable Space
	Cafe Café Self Service Barista Bar		Audience
	Fóroige		Performance Stage



Thank you

