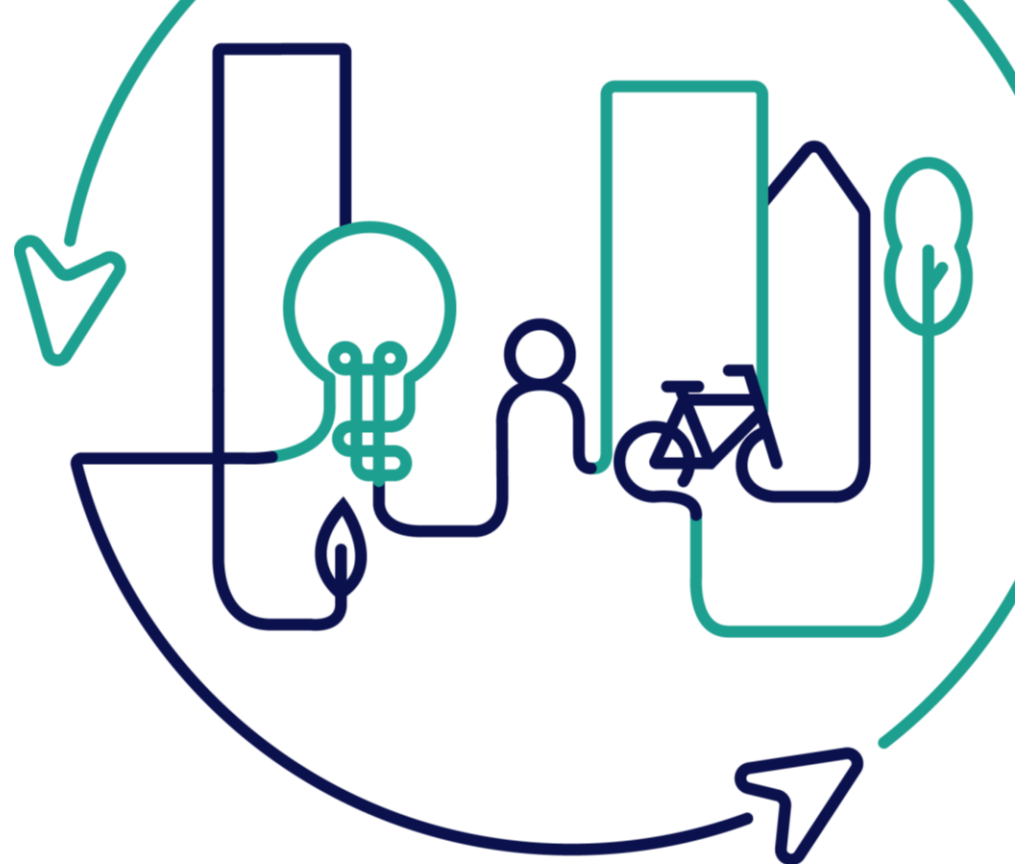


EUROPEAN U R B A N INITIATIVE



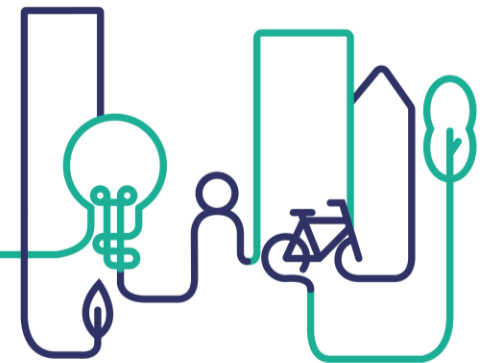
Co-funded by
the European Union

Parallel Workshops: Design & Delivery – Operational solutions for Creative Regeneration

Wednesday 26 November 2025 – 14.00 to 15.30

Facilitated by Levente Polyák and with:

- Waterford Treasures
- Viskali Institute, Riga



Co-funded by
the European Union



Session Aims

1

To understand the technical and operational challenges facing 2 regeneration projects (Waterford Treasures and Viskali Institute, Riga)

2

To discuss in groups those operational challenges and co-produce potential solutions

3

To share the potential solutions with the 2 regeneration projects and discuss what happened in reality

4

To apply learning to your local contexts in Ireland



Session Plan

14:00

Introduction

14:05

**Case Study Presentations
(Challenges)**

14:25

Group Activity

15:00

Feedback and Discussion

15:15

**Case Study Response
(Solutions)**

15:25

Wrap Up

The General Operational Challenges facing Regeneration Projects

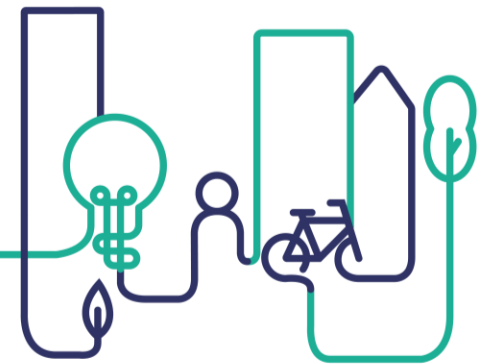
- Legal and regulatory compliance (planning and heritage)
- Accessibility and universal design in heritage buildings
- Operational management and long-term sustainability of reused sites



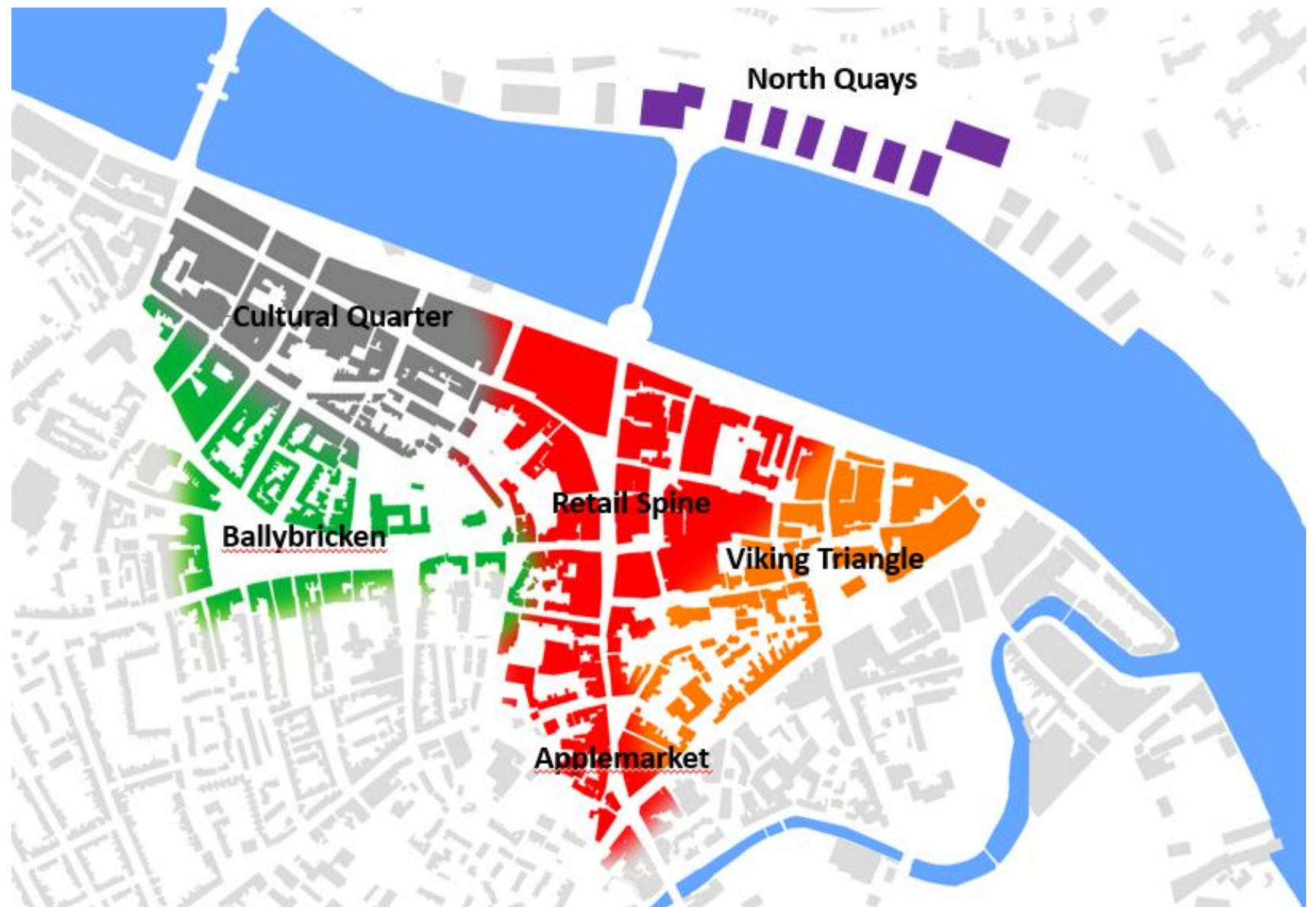
**Matthew
Partridge,
Waterford
City & County
Council**

Design and Delivery: Operational Solutions for Creative Regeneration

Matthew Partridge
Waterford City & County Council



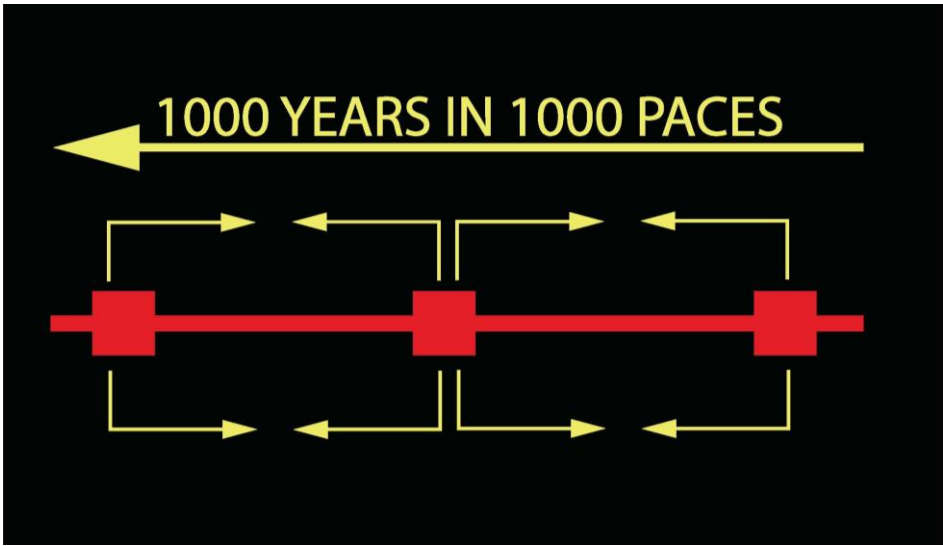
Co-funded by
the European Union



➤ Concentric City Centre

➤ Neighbourhoods

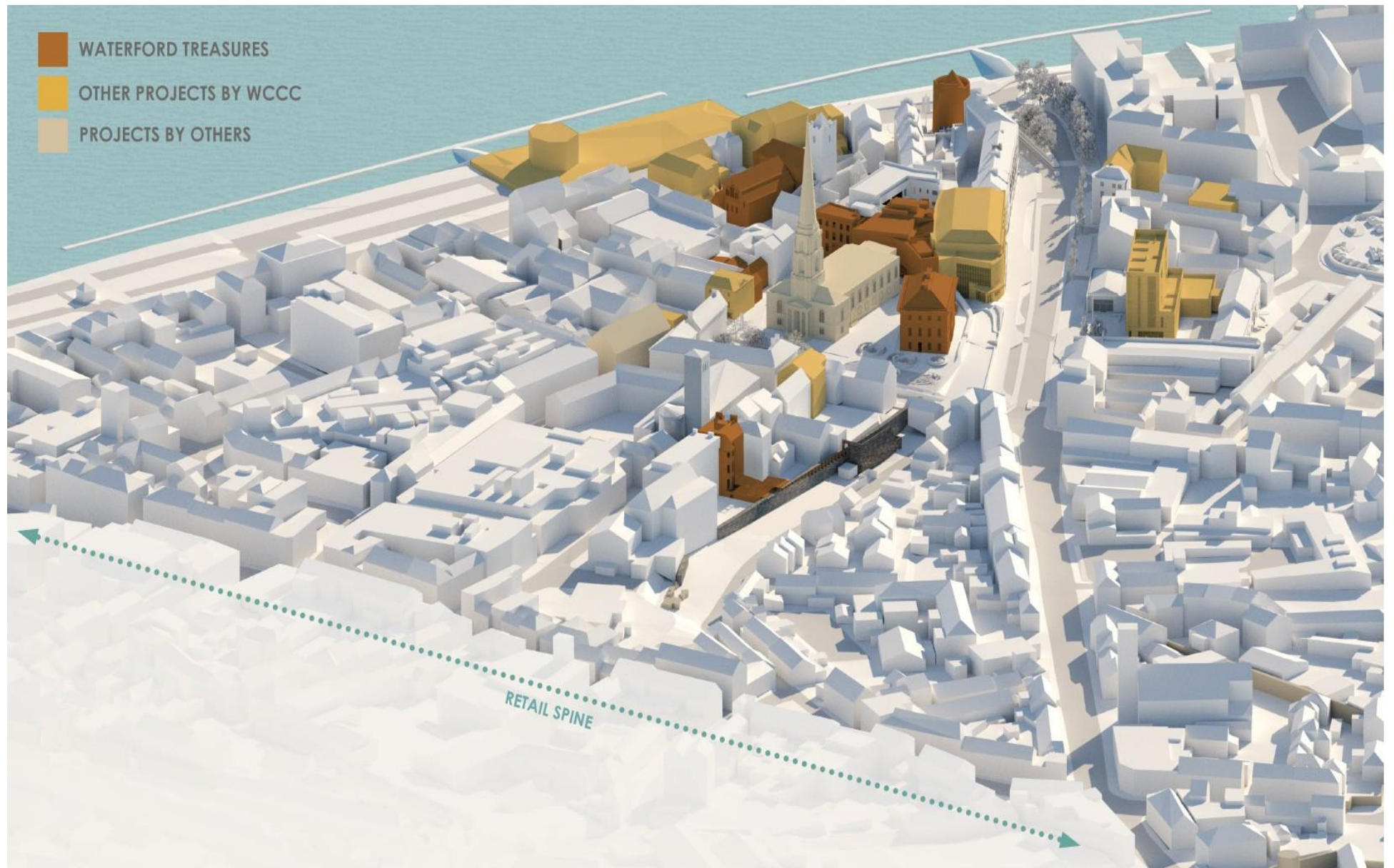
➤ **Design and Delivery: Operational Solutions for Creative Regeneration**



➤ Concept – Heritage Led Regeneration

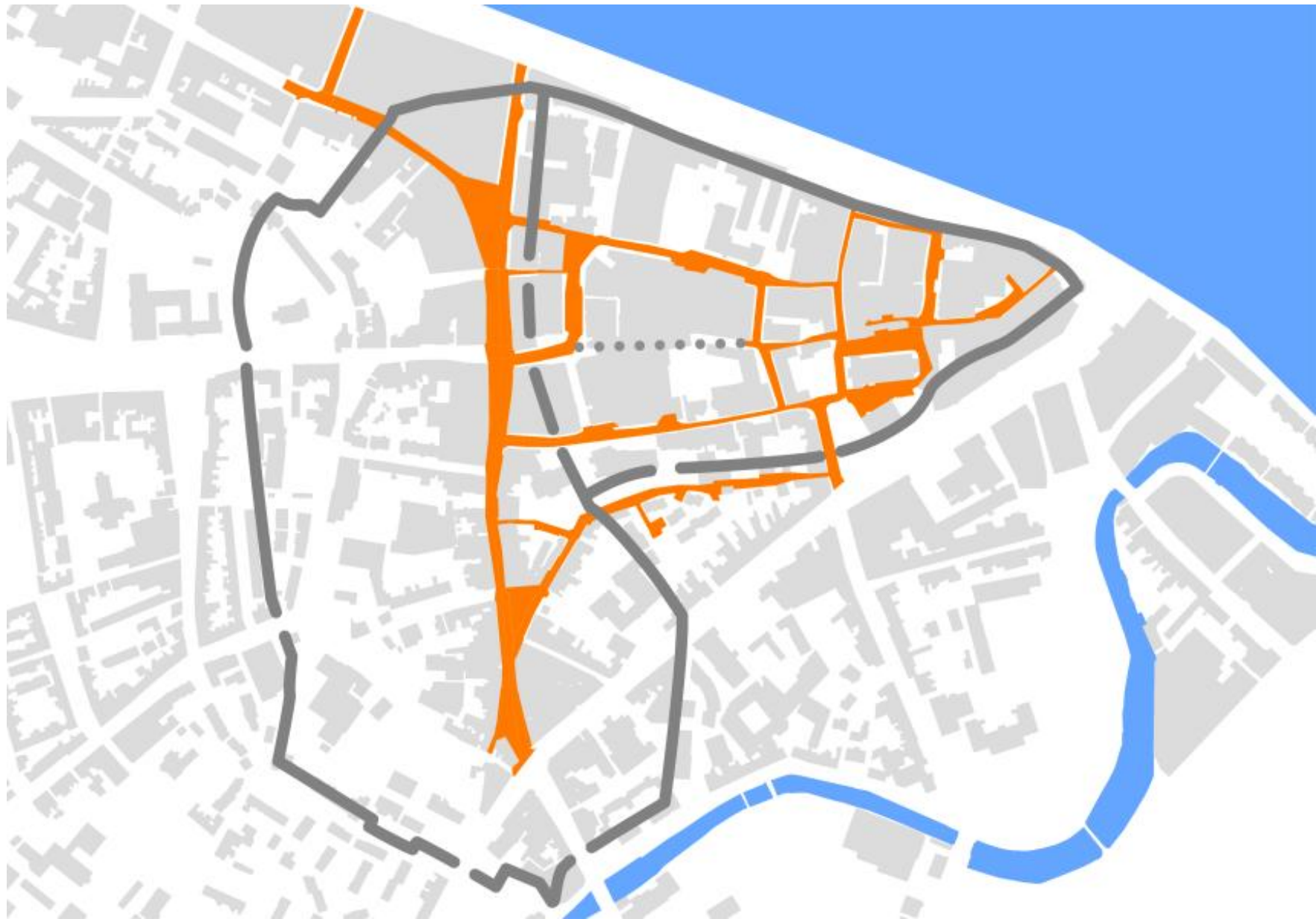
➤ Application – Museums Without Boundaries

➤ **Design and Delivery: Operational Solutions for Creative Regeneration**



➤ The Viking Triangle
Waterford

➤ **Design and Delivery: Operational Solutions for Creative Regeneration**



➤ City Walls and Shared Spaces

➤ **Design and Delivery: Operational Solutions for Creative Regeneration**

➤ 100 Years of Neglect



➤ Gravity

➤ Health and Safety

➤ Conservation

➤ Compatible Use

➤ **Design and Delivery: Operational Solutions for Creative Regeneration**

➤ NEB Core Values - Beautiful



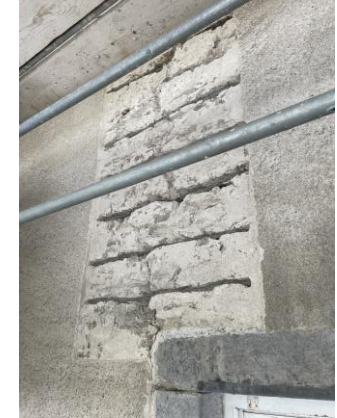
➤ Bishops Palace, The Mall, Waterford

➤ **Design and Delivery: Operational Solutions for Creative Regeneration**

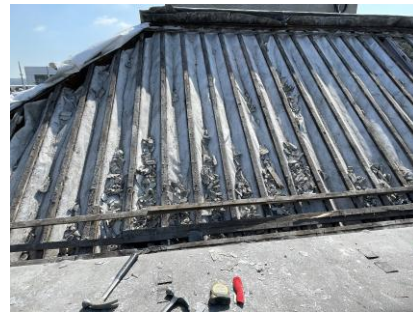
- Stonework
- Repointing



- Windows
- Structural Stitching



- Roof Works



- **Design and Delivery: Operational Solutions for Creative Regeneration**

➤ NEB Core Values - Sustainable



➤ Museum of Time, Greyfriars, Waterford

➤ Before and After

➤ **Design and Delivery: Operational Solutions for Creative Regeneration**



➤ Museum of Time; Before & After

➤ **Design and Delivery: Operational Solutions for Creative Regeneration**

➤ NEB Core Values - Together



➤ Irish Wake Museum, Cathedral Sq, Waterford

➤ Before and After

➤ **Design and Delivery: Operational Solutions for Creative Regeneration**



➤ Irish Wake Museum

➤ Before & After

➤ **Design and Delivery: Operational Solutions for Creative Regeneration**

➤ Regulatory Compliance



➤ 124-130 Parade Quay
Waterford

➤ **Design and Delivery: Operational Solutions for Creative Regeneration**

123B Parade Quay. 123A Parade Quay (Central Hall).

➤ Regulatory Compliance



➤ 124-130 Parade Quay
Waterford

Location of proposed plaza. 124-130 Parade Quay terrace.

➤ **Design and Delivery: Operational Solutions for Creative Regeneration**

➤ Regulatory Compliance



➤ 124-130 Parade Quay
Waterford



➤ **Design and Delivery: Operational Solutions for Creative Regeneration**

➤ Regulatory Compliance



➤ ***Existing***

➤ 124-130 Parade Quay

Waterford

➤ **Design and Delivery: Operational Solutions for Creative Regeneration**

➤ Regulatory Compliance

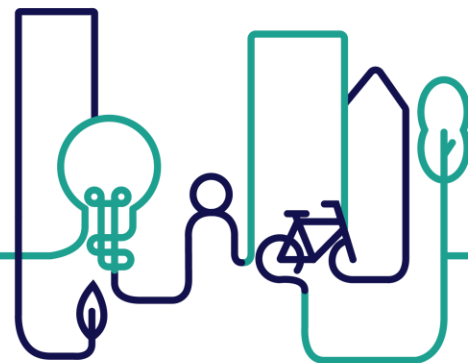


➤ ***Proposed***

➤ 124-130 Parade Quay
Waterford

➤ **Design and Delivery: Operational Solutions for Creative Regeneration**

Thank you





**Zane Rugena,
Viskali Institute
and FREE RIGA**

Viskaļi.
Institute of Design for
Quality of Life.

Zane Rugena, Head of
Sustainability and
Development
FREE RIGA

RIGA.

- 1,400 vacant buildings
- isolated neighbourhoods
- excluded marginalised groups
- affordable housing crisis

FREE RIGA.

- 10 years
- The one and only
- vacant buildings=affordable space



VISKAĻI.

- Former military and University campus
- 25 years rent contract
- funded only with the income
- first long term development project
- huge social impact - over 1000 events per year, creative and non-formal education, social services



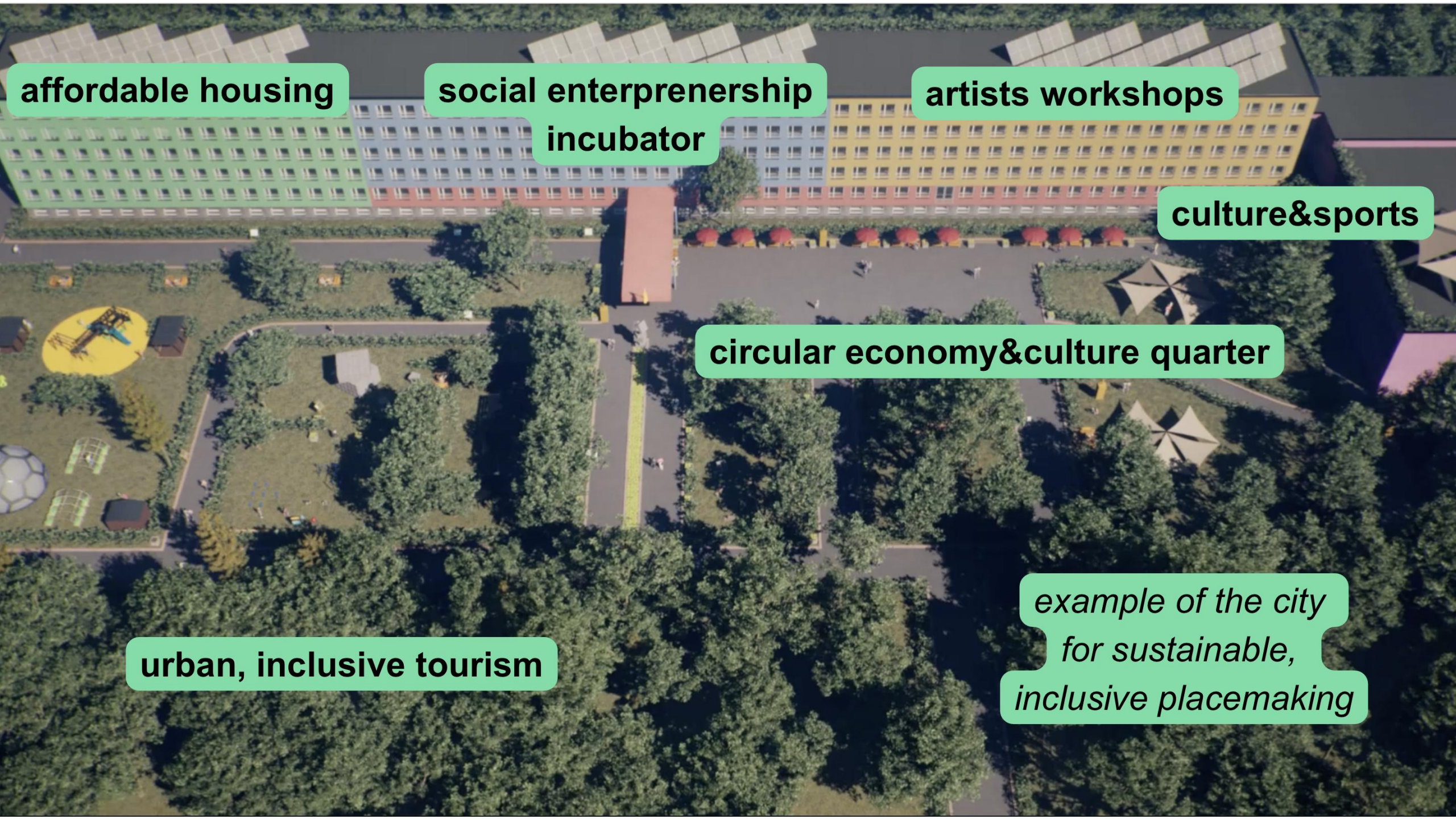
Institute of Design
for Quality of Life



New European Bauhaus
PRIZES 2023 FINALIST

Platform for countless social innovations

Unlocking self-happiness involves caring for others.
That's when the co-creation of a better future begins.



affordable housing

**social entrepreneurs
incubator**

artists workshops

culture & sports

circular economy & culture quarter

urban, inclusive tourism

*example of the city
for sustainable,
inclusive placemaking*



social enterprises

cinema hall
tennis courts

artist residencies

co-working spaces

craft workshops

social initiatives

NGOs

200 residents

4 dogs

5 cats and the sharks...

MISTAKES that LEADS to challenges

- No to zoning=yes to problems
- Illegal building site even before the actual building starts
- Hazardous pollution





inclusive but not acceccible





creative when it comes to heating

*13.3 % heating loses outside
~ 7000 Eur per year*





how to recycle a building?

*increase of the land tax
a degrading view&activities*



15.000 m2+ of maintenance management for...community

not effective





and yes, the seagulls...

roof damage
~ 5000 Eur per year



700 000 requered investment

*we want circular,
but can we afford that?*

time to renovate, but how?

**THANK YOU
FOR YOUR TIME!**



**Group
Activity**

CHALLENGE CANVAS

HOW DOES IT WORK

- Based upon the presentations of Waterford Treasures and Viskali

Institute, detail on the Challenge Canvas:

- Step 1 – your understanding of the core operational challenge and how it relates to your own experiences
- Step 2 – how you would address the core operational challenge
- Step 3 – how you would transfer the solution to your own contexts



Feedback

CHALLENGE CANVAS

➤ Each Group to feedback on their Challenge Canvas

20'



**Presenters'
response**

How did we respond to the Operational Challenges

SOLUTIONS AND LESSONS LEARNED

➤ Matthew Partridge

➤ Zane Rugena

10'



**Wrap Up
by
Levente**

Thank you

