

EUROPEAN
U R B A N
INITIATIVE

TRAVEL GUIDE

Fundão, Portugal 14/05/2025 – 15/05/2025



Co-funded by
the European Union



1. TRAVEL TO FUNDÃO

1.1. From Lisbon Airport

By Car

- **Duration:** approximately 2 hours and 30 minutes
- **Route:** A1 Highway – A23 Highway
- **Car rental:** available at the airport. Booking and information on the airport website: [Car Rental at Lisbon Airport](#)

By Bus

- **Route:** From Lisbon Airport, take the Metro's Red Line to Oriente Station. From there, board a bus to Fundão.
- **Duration:** The metro transfer from Lisbon Airport to Oriente station takes around 10 minutes. The bus ride takes approximately 3 hours and 30 minutes.
 - **Rede Expressos** offers bus services from Oriente Station to Fundão twice a day and tickets start from 7,95€. Tickets can be purchased through Rede Expressos:
 - Website: rede-expressos.pt/en
 - Phone number: (+351) 275 313 506
 - **FlixBus** operates buses from Oriente Station to Fundão once a day in the morning and tickets start from 6€. Tickets can be purchased online through Flixbus:
 - Website: <https://www.flixbus.pt/>

By Train

- **Route:** From Lisbon Airport, take the Metro's Red Line to Oriente Station. From there, board a train to Fundão.
- **Frequency:** Fast trains are operating three times a day.
- **Duration:** The metro transfer from Lisbon Airport to Oriente station takes around 10 minutes. The train journey takes between 3 hours 15 minutes and 5 hours, depending on the train service selected.
- **Cost:** Tickets from 17,80€, depending on the train service and ticket category selected.
- **Booking and Information:** Tickets and schedules are available through Comboios de Portugal:
 - Website: www.cp.pt/passageiros/en
 - Phone number: (+351) 808 109 110

1.2. From Porto Airport

By Car

- **Duration:** approximately 2 hours and 45 minutes
- **Route:** A1 Highway – A25 Highway – A23 Highway
- **Car rental:** available at the airport. Booking and information on the airport website: [Car Rental at Porto Airport](#)

By Bus

- **Route:** From Porto Airport, take a bus to Porto Campanhã Terminal. From there, board a bus to Fundão.
- **Rede Expressos** offers regular buses from Porto Airport to Porto Campanhã Terminal. The journey takes around 20 minutes and tickets start from 2,95€. Check schedules online at rede-expressos.pt/en.
- **Rede Expressos** offers direct buses from Porto Campanhã Terminal to Fundão at least 6 times a day. The journey takes approximately 4 hours and tickets start from 7€. Tickets can be purchased online through Rede Expressos:
 - Website: rede-expressos.pt/en
 - Phone number: (+351) 275 313 506

By Train

- **Route:** From Porto Airport, take a bus to Porto Campanhã Terminal. From there, board a train to Fundão.
- **Rede Expressos** offers regular buses from Porto Airport to Porto Campanhã Terminal. The journey takes around 20 minutes and tickets start from 2,95€. Check schedules online at rede-expressos.pt/en.
- **Duration:** The train journey takes between 6 and 9 hours, depending on the train service selected, with several connections.
- **Cost:** Tickets from 28,70€, depending on the train service and ticket category selected.
- **Booking and Information:** Tickets and schedules are available through Comboios de Portugal:
 - Website: www.cp.pt/passageiros/en
 - Phone number: (+351) 808 109 110

2. ACCOMMODATION IN FUNDÃO

The conference will take place at the **Business Centre of Shared Services** (Centro de Negócios e Serviços):

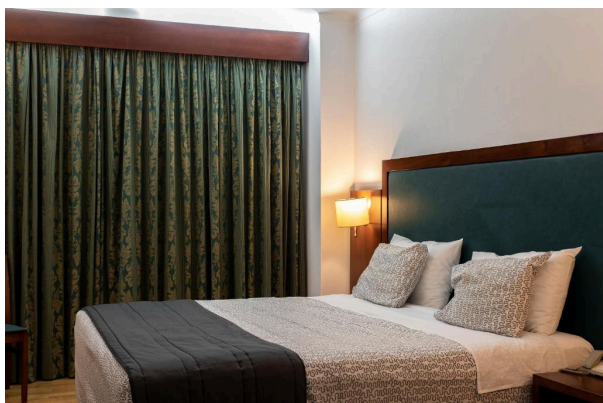
Address: Praça Amália Rodrigues, Fundão, Portugal

The hotels in this guide are recommended for their excellent service, convenient location, and preferential rates within a set budget.

These are merely suggestions. Participants are free to choose any accommodation that suits their preferences and needs.

2.1. Hotel Samasa

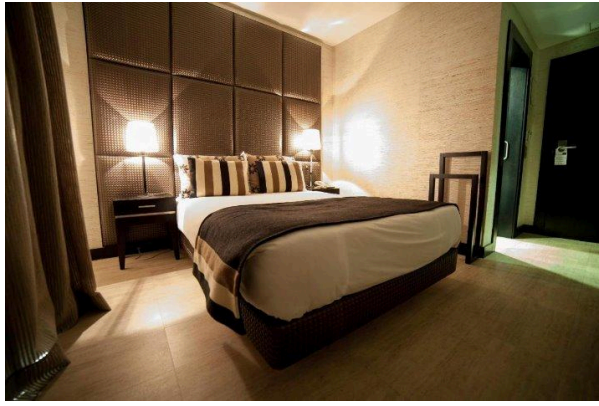
The only hotel in Fundão that offers the convenience of being within walking distance from the venue.



- **Website:** <http://www.hotelsamasafundao.com/>
- **Address:** R. Vasco da Gama, 6230-375 Fundão
- **Direction:** within walking distance from the venue (650 metres)
- **Check-in:** 14:00 / **Check-out:** 12:00
- **Rates:**
 - 50€ for a single room, including breakfast
 - 70€ for a twin/double room, including breakfast
- **Reservation:** by email at hotel@hotelsamasafundao.com, mentioning that you are booking with the European Urban Initiative.

2.2. Alambique de Ouro Hotel Resort & Spa

A high-quality option that takes a short 5-minute drive to the city centre.



- **Website:** <https://www.hotelalambique.com>
- **Address:** R. Cidade da Covilhã 88, 6230-463 Fundão
- **Direction:** 3.9 kilometers from the venue, no public transport available.
- **Check-in:** 16:00 / **Check-out:** 12:00
- **Rates:**
 - o 72€ for a single room, including breakfast
 - o 135€ for a twin/double room, including breakfast
- **Reservation:** by email at eventos@crchotels.com, mentioning that you are booking with the European Urban Initiative.

2.3. Cerca Design House

High-quality facilities in beautiful rural settings, just outside Fundão.



- **Website:** <https://www.cercadesignhouse.com/>
- **Address:** Largo da Praça 1, 6230-171 Donas
- **Direction:** 4.7 kilometers from the venue, no public transport available
- **Check-in:** 15:00 / **Check-out:** 12:00
- **Rates:** starting from 85€ depending on the room type, including breakfast
- **Reservation:** by email at info@cercadesignhouse.com, mentioning that you are booking with the European Urban Initiative.

3. TRANSPORT IN FUNDÃO

Fundão is a small and accessible town, offering several convenient ways to get around:

- **Walking:** the historic centre is compact and pedestrian-friendly, making it easy to explore on foot.
- **Bicycles:** rent a bike from the **Fundão Tourist Office** and enjoy the town and its surroundings at your own pace.
- **Taxi:** for longer distances, taxis are available at **Av. da Liberdade 98, 6230-341 Fundão**. You can contact them at **(+351) 275 752 707**.

Transportation from hotels to and from the conference venue should be organised individually by participants.

Transportation from the conference venue to and from the site visits will be organised by the Municipality of Fundão.