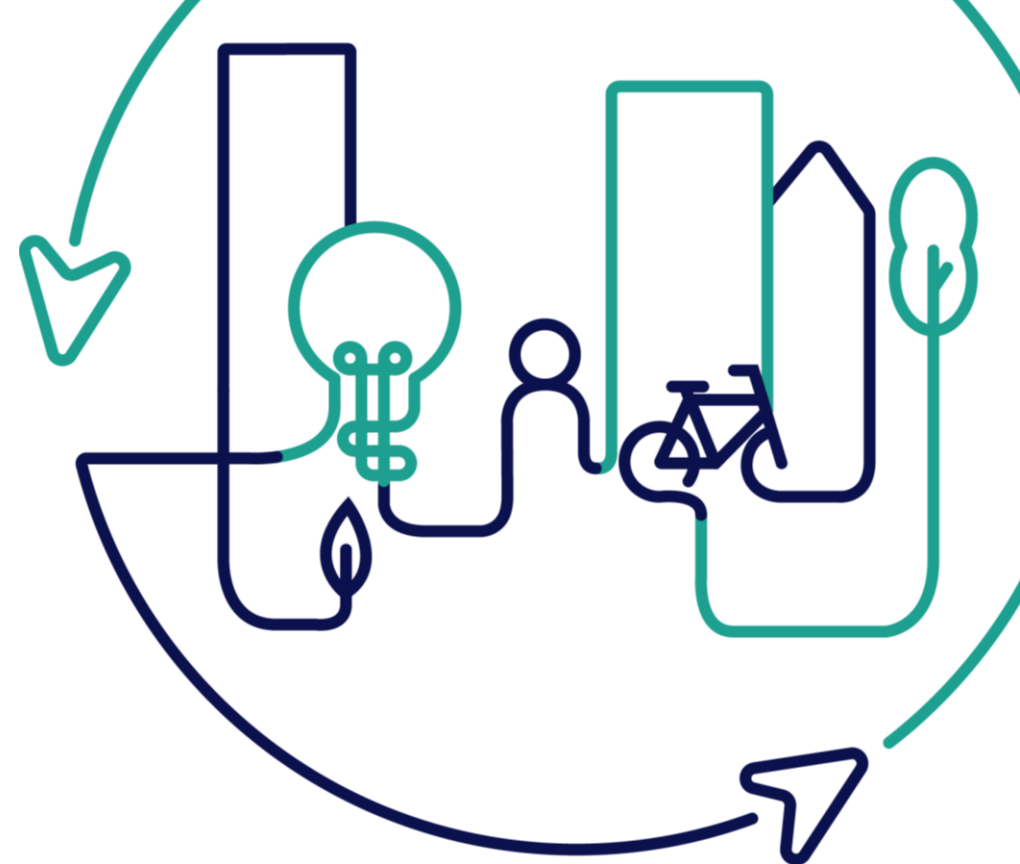


EUROPEAN U R B A N INITIATIVE



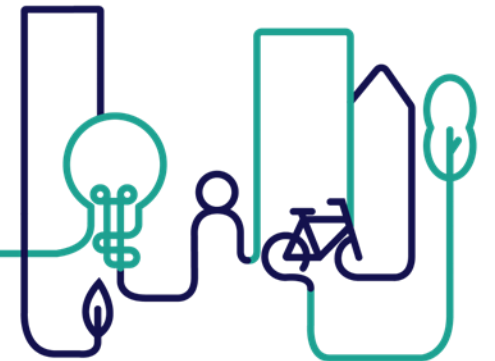
Co-funded by
the European Union

BUILDING THE FUTURE: INTEGRATING NEB VALUES AND PRINCIPLES IN HERITAGE REGENERATION UNDER THRIVE AN EUI CAPACITY BUILDING EVENT IN IRELAND

12-13 NOVEMBER 2024, LIMERICK, IRELAND

Welcome !

Recorded message by MEP Marcos Ros

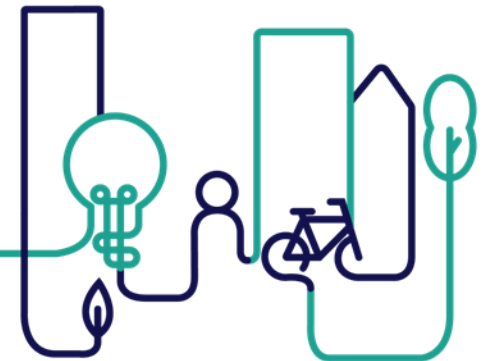


BUILDING THE FUTURE: INTEGRATING NEB VALUES AND PRINCIPLES IN HERITAGE REGENERATION UNDER THRIVE AN EUI CAPACITY BUILDING EVENT IN IRELAND

12-13 NOVEMBER 2024, LIMERICK, IRELAND

Our Agenda – Day 2

Curriculum designers: Eileen Crowley & Eleni Feleki, EUI Experts



Agenda Day 2

08.30 – 09.00 Registration

09.00 – 09.10 Agenda and Aims

09.10 – 09.40 Panel discussion

09.40 – 10.00 How to address challenges: Introducing the NEB Toolbox

10.00 – 10.30 COFFEE BREAK

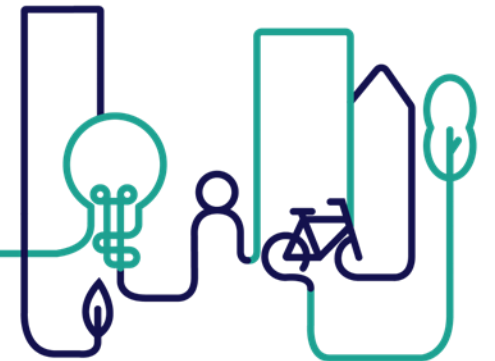
10.30 – 12.00 Hands on exercise: application of tools to the design, implementation and monitoring of NEB-aligned projects

12.00 – 12.40 Plenary discussion and reflections

12.40 – 12.50 Applying NEB beyond THRIVE

12.50 – 13.00 Closing words

13.00 – 14.00 LUNCH





**Panel
discussion**

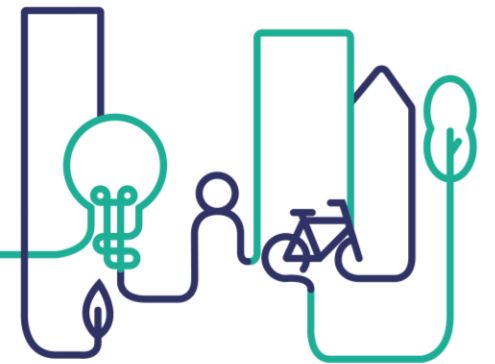
BUILDING THE FUTURE: INTEGRATING NEB VALUES AND PRINCIPLES IN HERITAGE REGENERATION UNDER THRIVE AN EUI CAPACITY BUILDING EVENT IN IRELAND

12-13 NOVEMBER 2024, LIMERICK, IRELAND

Challenges to designing NEB projects and the strategies to succeed

Moderated by Liat Rogel (EUI Expert)

- **Andrés De las Alas Pumariño Sela** - [SHARE](#) - Fuenlabrada, Spain
- **Nikolina Farčić** - [TUP](#) - Dubrovnik, Croatia
- **Peter Szegvári, Andrea Varga** - [The Krypton Plant](#) - Ajka, Hungary



Co-funded by
the European Union

TUP - Dubrovnik Croatia

The TUP Creative Centre aims to transform the former Carbon Graphite and Electrical Contact Products Factory into a dynamic urban cultural and social incubator. The site will become a year-round hub for cultural and creative activities, offering spaces for workshops, events, coworking, and more.



Co-funded by
the European Union



SHARE - Fuenlabrada, Spain

The SHARE Project aims to introduce a new model of housing by rehabilitating an iconic, disused school in the city centre, transforming it into affordable housing that adheres to New European Bauhaus (NEB) principles.



Co-funded by
the European Union



The Krypton Plant

Ajka, Hungary

The Krypton Plant in Ajka is home to the world's first factory producing krypton gas, a cornerstone of the town's industrial heritage. This unique site, is becoming a cultural and educational hub. The project aims to preserve the historic significance of the factory while engaging younger generations through creative storytelling and exhibitions.



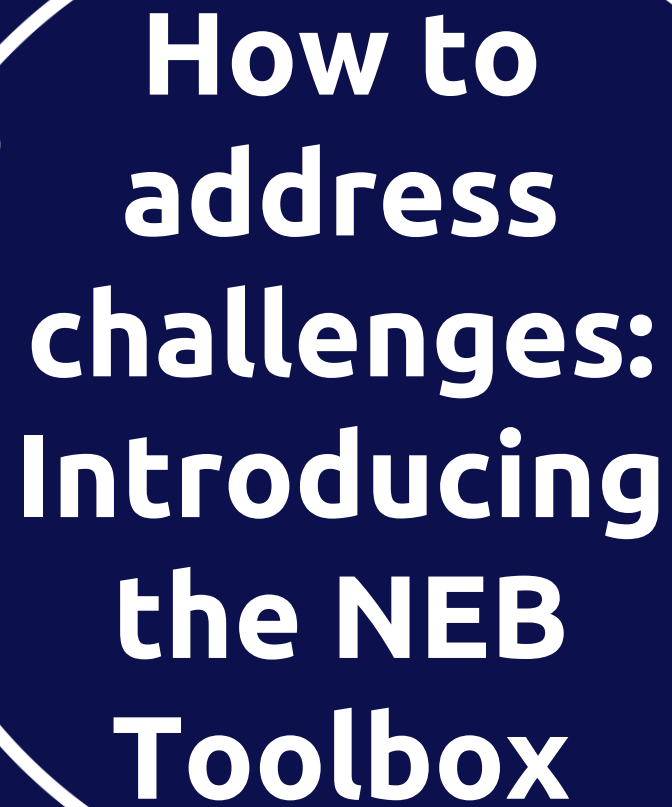
Co-funded by
the European Union





Thank you!

**Building the future: Integrating NEB
values and principles in Heritage
Regeneration under THRIVE
An EUI capacity building event in Ireland
Limerick, 12-13 November 2024**



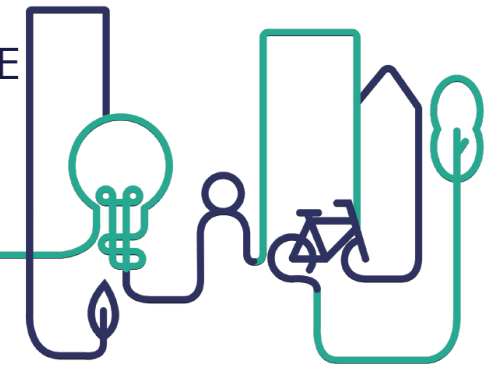
**How to
address
challenges:
Introducing
the NEB
Toolbox**

NEW EUROPEAN BAUHAUS

INCUBATION OF 20 PLACE-BASED PROJECTS

Building the Future: Integrating NEB values and principles in Heritage Regeneration under THRIVE

Dr Cristina Garzillo Leemhuis
Limerick, 13 November 2024



Co-funded by
the European Union



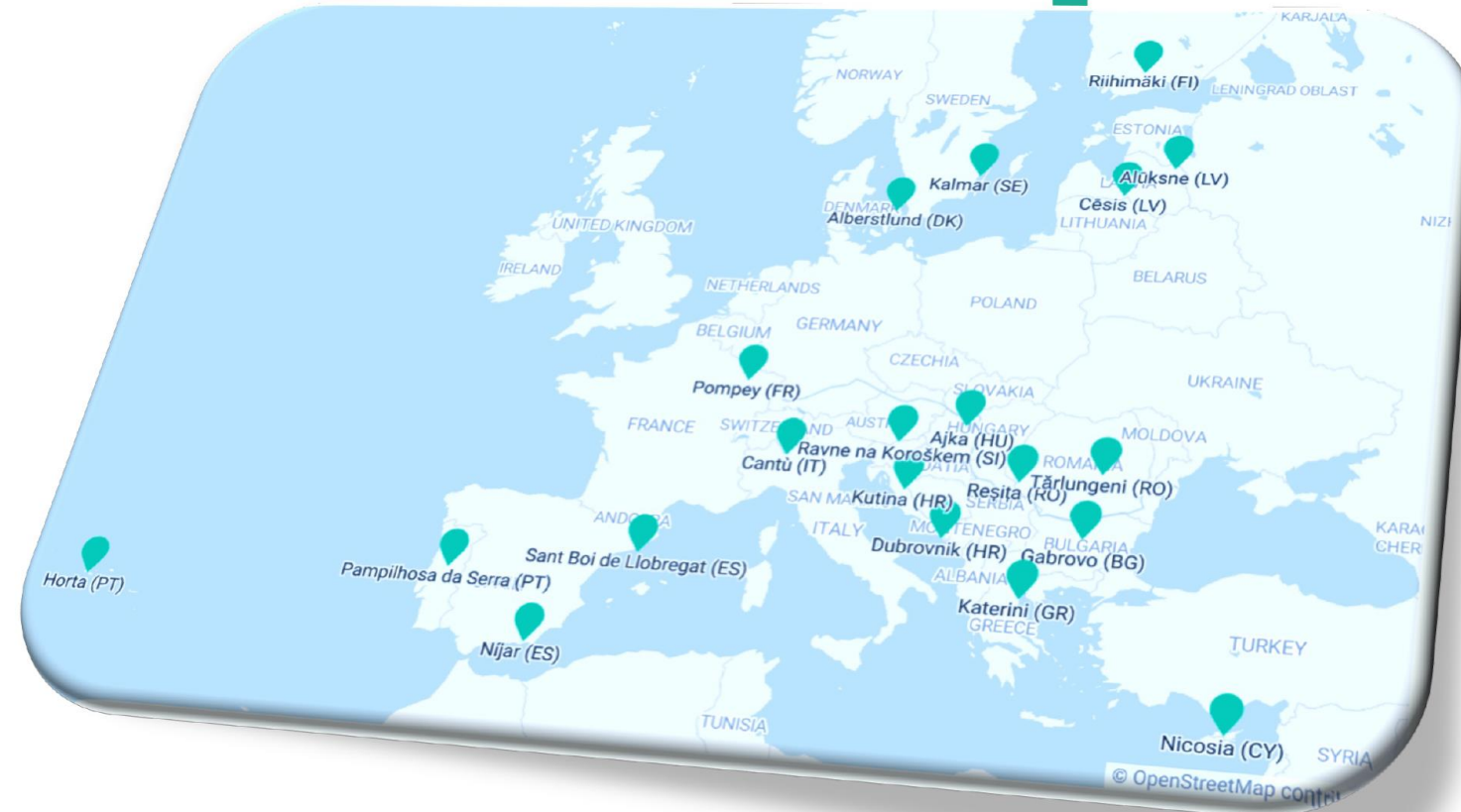
Henning
Larsen



How did it start

The Technical Assistance

20 projects willing to increase their ambitions to walk the talk on NEB values



MORE THAN 60 EXPERTS AROUND 20 PROJECTS

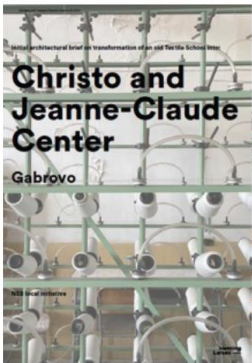


Multidisciplinary teams
of 3 to 5 experts per
project

Experts adapted their
practices and methods
to the specificities of
NEB and shared
questions/experience
across projects

CO-DEVELOPMENT OF ROADMAPS, TECHNICAL STUDIES

PARTICIPATORY PLANNING



Christo and Jeanne-Claude Center
Gabrovo

Open and Connect
The building in the project area has significant environmental and functional value, especially in terms of its location. The possibility of preserving and strengthening its value is a priority. The project should make a coherent project through and of urban and existing on each side for increasing resistance from and multiple access to the main entrance and main outdoor area.

Key possibilities for urban solution
The idea of a new 'Public' building in the area is a great potential to increase a new and vibrant center with collaboration with the local community and the building. The building has a unique place with several large open spaces that are easily accessible and could be the different features.
It is suggested that the redevelopment of the building should connect the ground floor of the building toward the main area, creating a new urban and outdoor space (walk-in-village etc). The remaining building should be demolished to create better the area between the outdoor area and the building should be 'vital' function toward the main area.

Re-use of
Current green infrastructure. Plan to use the area and full existing urban. The use of green infrastructure as a platform for integrating and organizing the existing green spaces. The green infrastructure can be a 'green' area to create a green outdoor space between the main area and the main park located in the center of the main area. The sustainable strategy should also include green infrastructure for both sides and an urban and landscape approach to enhance the green infrastructure and underground water meaning will provide sustainable spaces for housing of green areas.

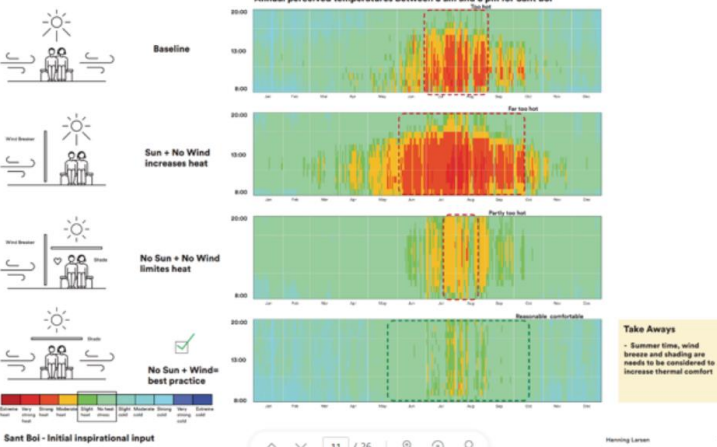


Initial Analysis Proposed Masterplan

Stormwater Service Level	104 %	Biodiversity	0.44
Detention Volume	2623 m³	Green Factor Score	1.11
Peak Run-Off Coefficient	0.48	Open Space Provision	84 %
Natural Water Balance	75 %	Trees	1213
Evaporation	25 %	Green Spaces	218935 m²
Infiltration	42 %	Green Roofs	0 m²
Run-Off	93 %	CO2 Uptake	34 t/y
Stormwater Treatment	71 %	Air Pollutants Removal	1.82 kg/y
TSS Removal	80 %	Nitrogen Oxide Removal	95 kg/y
Nutrient Removal	87 %	Ozone Removal	71 kg/y
Heavy Metals Removal	75 %	Sulfur Dioxide Removal	263 kg/y
Potable Water Savings	0 m³/y	Particulate Matter Removal	726 kg/y
Storage Volume	0 m³		



Initial microclimate design principles - Initial analysis for Sant boi

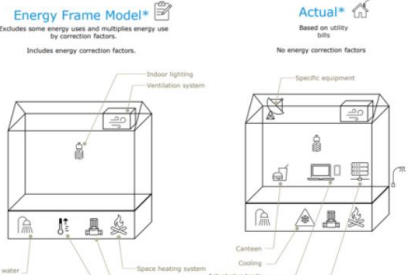


Energy consumption in L'Oliviera Energy models

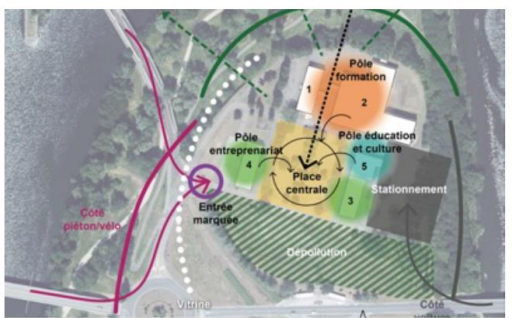
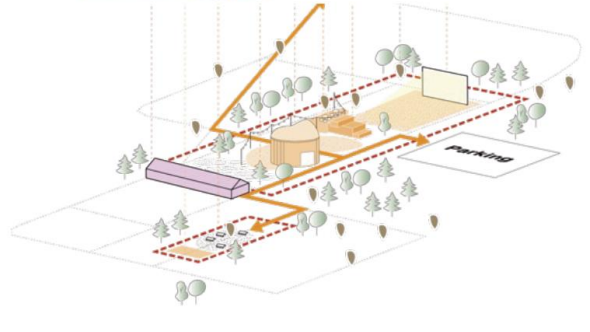
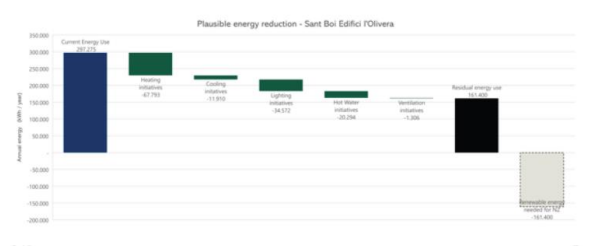
To calculate energy consumption for L'Oliviera, Ramboll team relied on the Energy Performance Certificate (EPC) energy consumption information. It is important to acknowledge EPC energy consumption information is developed based on a calculation (Energy Frame Model) that accounts for only a limited number of end-uses in the building. This means that not all end-uses are reflected in the EPC information and therefore the actual energy consumption is likely higher than that listed in the EPC.

The EPC label for L'Oliviera indicates that the building annual EUI is 76 kWh/m²/year. We estimate that the actual energy consumption is between 514-540 kWh/m²/year.

Because the EPC contains very little information about the building envelope or systems, the above calculations should be viewed as estimates only. We recommend that L'Oliviera staff conduct an additional analysis based on the energy audit, detailed information about building systems and an actual energy use in the building.



Reaching net zero energy Potential of Energy efficiency strategies



PUBLIC EVENTS TO ENGAGE NEW PEOPLE, DIRECT INTERACTION ON THE GROUND

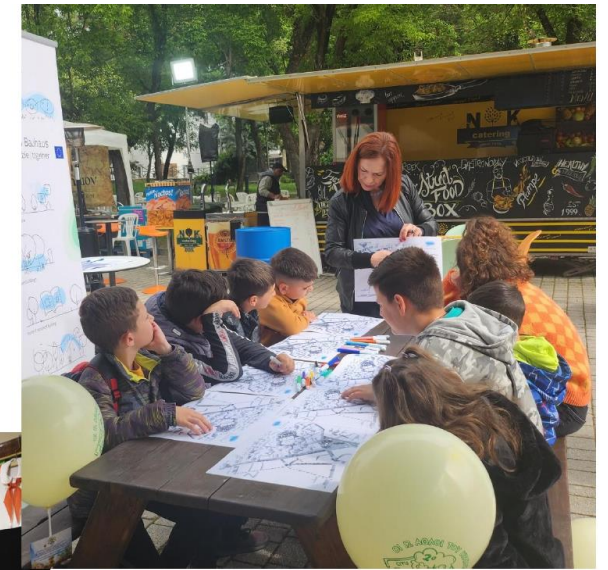


Project owners,
experts and local
communities
achieved promising
results together.

They reflected
upon innovative
governance
structures &
business models to
attract funding and
open new doors.



Each project owner
developed its own
NEB roadmap to
pave the way to
achieve defined
ambitions.



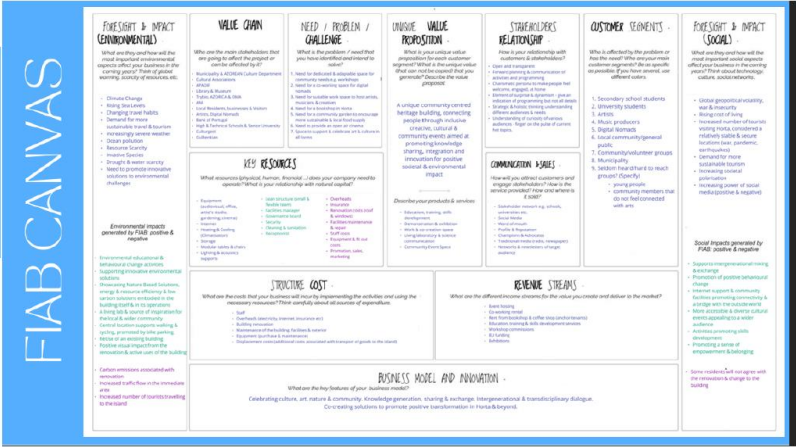
SUSTAINABLE BUSINESS MODEL CANVAS, BENCHMARKING ANALYSIS



New European Bauhaus
beautiful sustainable together

Faial Island Aris Bank

ECO BUSINESS MODEL CANVAS: APRIL 2023



Part2_Funding Opportunities_NEB_Gaiacells.pdf

Funding & Financing Projects

- A slow & complex process
- Combination of funding solutions & types necessary both at development & operational phase
- Seek external expertise where needed



An innovative governance structure



In 2007, the *Friche* expanded its actions on an urban and metropolitan scale by changing from an associative status to a private and public interest form: the **Société Coopérative d'Intérêt Collectif (SCIC)** with variable capital. The objective was to establish not a facility but a whole territory, while responding to the new challenges of decentralisation.

- The SCIC is responsible for the physical transformation of the site, land management and maintenance, implementation of a co-production policy and artistic and cultural activities
- The structure is administered by a **board of public and private stakeholders** (users of the site, artists, operators and institutions) and managed by a general assembly, made up of some forty members divided into three colleges (contributors, management and development, proximity).
- The City of Marseille, the *Provence Alpes - Côte d'Azur* Region, the *Bouches du Rhône* Department and the State entrusted the SCIC with the responsibility for the 45,000 m² block of land via a **long lease for 45 years**.

L'Olivieria digitALL: a mix between living lab and "Tiers-lieux"/ Tercer lugar

Both concepts aim to be open, collaborative and inclusive spaces that foster innovation and creativity in a community environment

Living Lab

A research and innovation environment that involves real users in the process of designing and developing products and services. Collaborative space in which experiments and proofs of concept are carried out to create innovative solutions that adapt to the needs of users.

More focused on research and development of new products and services

Third places/ Tercer lugar

A community space that provides a collaborative and creat work environment: coworking space, cafe, library, or any other place that encourages social interaction and the exchange of ideas between people.

It can include activities such as workshops, talks, exhibitions or initiatives that encourage collaboration and joint learning.

More oriented to creativity, collaboration and joint learning. More informal and flexible



New European Bauhaus TOOLBOX

FOR WHOM?

The toolbox is designed for municipalities, NGOs, organisations, and teams keen on benefiting from the inspirational framework built on the NEB values and working principles.

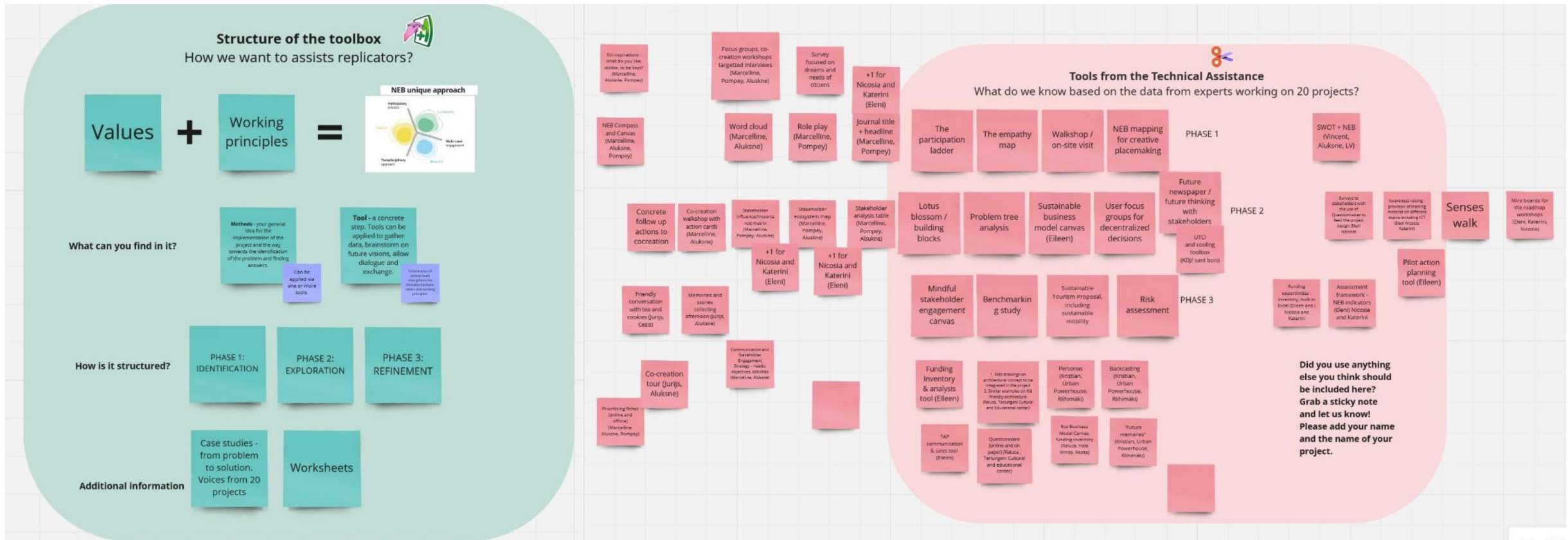
WHY?

The NEB toolbox serves as a comprehensive resource that **empowers authorities and other project owners to initiate transformative actions** and set things in motion to join a pan European movement of sustainable, inclusive, and beautiful transformation.

HOW?

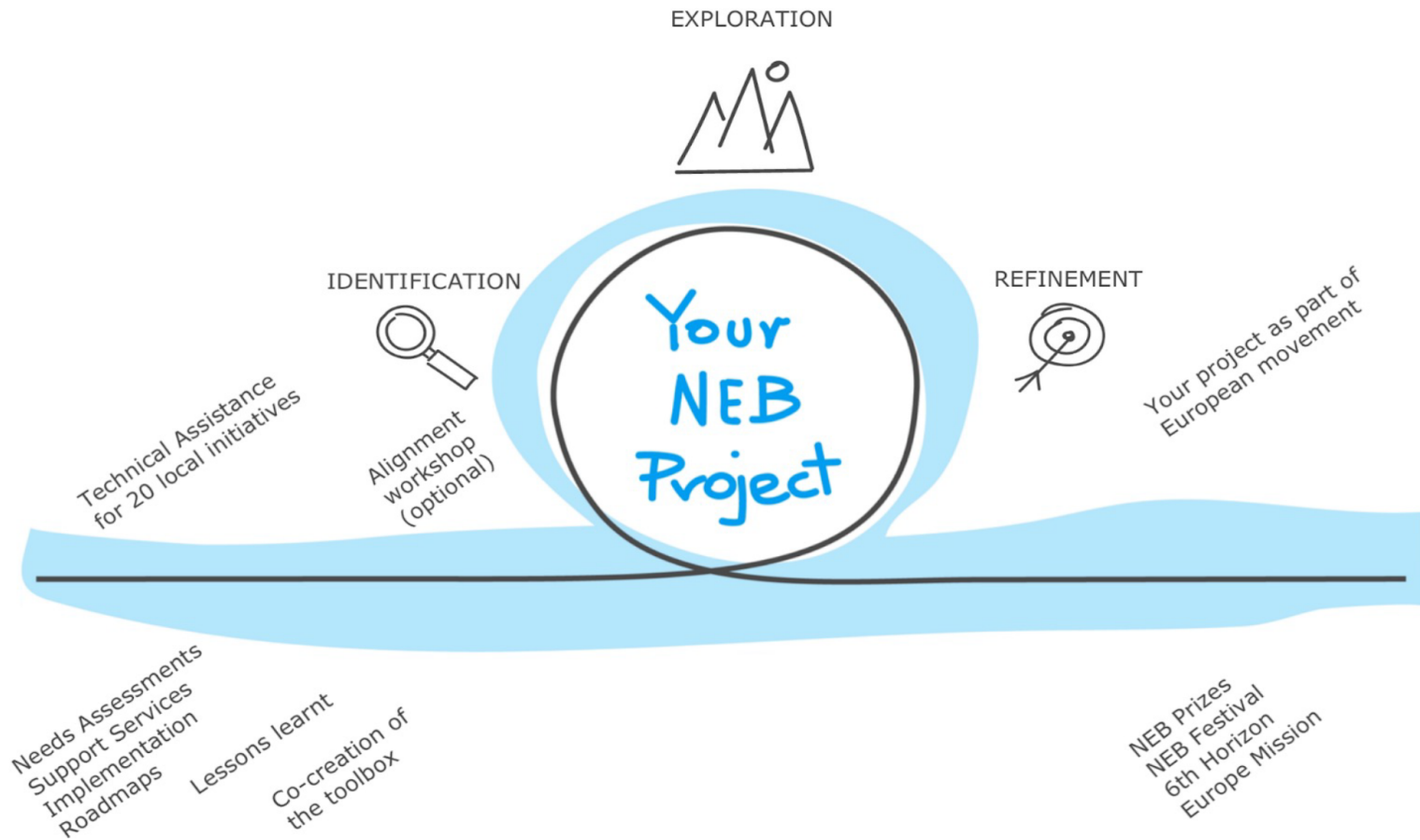
There are several possible starting points – for instance, from the existing project, an idea for a project or from the definition of what exactly is needed together with stakeholders. In all cases, the toolbox provides tips on how to plan your work. **The tools are allocated to specific phases, but you still have the flexibility in framing your process.**

The ground: Technical Assistance as a foundation of the TOOLBOX



Images: Screenshots from collaborative board used during co-creative webinar on the toolbox on 08.05.2023.

Three phases for your NEB project distilled from the Technical Assistance



To help you stay on track with the project the tools in the toolbox are clustered around three phases inspired by the design thinking approach.

Considering the experiences made during the Technical Assistance and described, the process in the toolbox is structured around following steps:

- **IDENTIFICATION**
- **EXPLORATION**
- **REFINEMENT**

What can you achieve at each phase?



1. Identification

- Assess your needs and capabilities
- Identify stakeholders, including hard-to-reach groups
- Inform and engage various groups on the NEB initiative
- Identify main areas of intervention
- Make plans and discuss them

2. Exploration

- Deepen motivation
- Let the stakeholders decide
- Enable change with trust and transparency
- Come closer to the future
- Establish the NEB working principles locally
- Embrace the potential of the NEB



3. Refinement

- Stay reflexive
- Reduce harmful impact and increase the meaningful ones
- Be aware of risks and react
- Target continues improvement toward beauty, inclusiveness, and sustainability
- Monitor and improve
- Find further opportunities to expand your ambitions



A list of tools according to the three phases

Identification

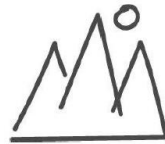


- ☐ Stakeholder mapping
- ☐ The participation ladder
- ☐ Senses walk for creative and inclusive place making
- ☐ The empathy map
- ☐ Doodling architectural concepts
- ☐ SWOT meets NEB
- ☐ Biodiversity sensitive urban design



7 tools

Exploration

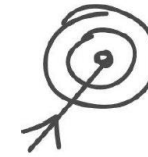


- ☐ Sustainable business model canvas
- ☐ Building blocks
- ☐ Design citizens' fora and inclusive advisory boards for decentralised decision making
- ☐ Tailored talks for inclusive social proofing of beauty and sustainability
- ☐ Backcasting
- ☐ Problem-solution tree analysis



6 tools

Refinement



- ☐ Risk assessment
- ☐ Reflexive monitoring tool
- ☐ Benchmarking study
- ☐ Level(s)
- ☐ Co-impact tool
- ☐ Assessment framework: balancing co-creation towards NEB



6 tools

SWOT

BUILDING BLOCKS

Reflexive monitoring tool

Risk Assessment

Citizens' Fora **TAILORED TALKS**

Problem-solution Tree analysis

participation ladder **empathy map**

Doodling architectural concepts

Stakeholder mapping **BACKCASTING**

Senses walk Benchmarking study

Biodiversity sensitive urban design

LEVEL(S) Sustainable business model canvas

CO-IMPACT TOOLS

Recognize diverse perceptions



A STEP-BY-STEP GUIDE

1

Challenge

2

Main Goal

3

Expected outcomes for your NEB project

4

Difficulty, time, what you need, groupwork

ILLUSTRATIVE TOOL (extract from the NEB Toolbox): IDENTIFICATION PHASE

The participation ladder

CHALLENGE: The level of participation in your region is low and the stakeholders don't believe changes are possible. This tool can be used as a framework to discuss an inclusive change. The benefits of participation are based on the intentions and willingness to relocate power from local institutions and officials to the citizens. The participation ladder helps organisers, local leaders, and facilitators to grasp and advocate for higher powers being transferred towards stakeholders, including vulnerable groups.

MAIN GOAL: The tool, first presented by Sherry Arnstein in 1969, shows the different levels of stakeholder participation as in a spectrum that goes from "informing" to "collaborating" and arrives at "devolving". It outlines a progression of steps that individuals or groups can take to increase the level of participation in their organisation, community, or territory. It can be also used in a direct conversation with the stakeholders to understand their needs.

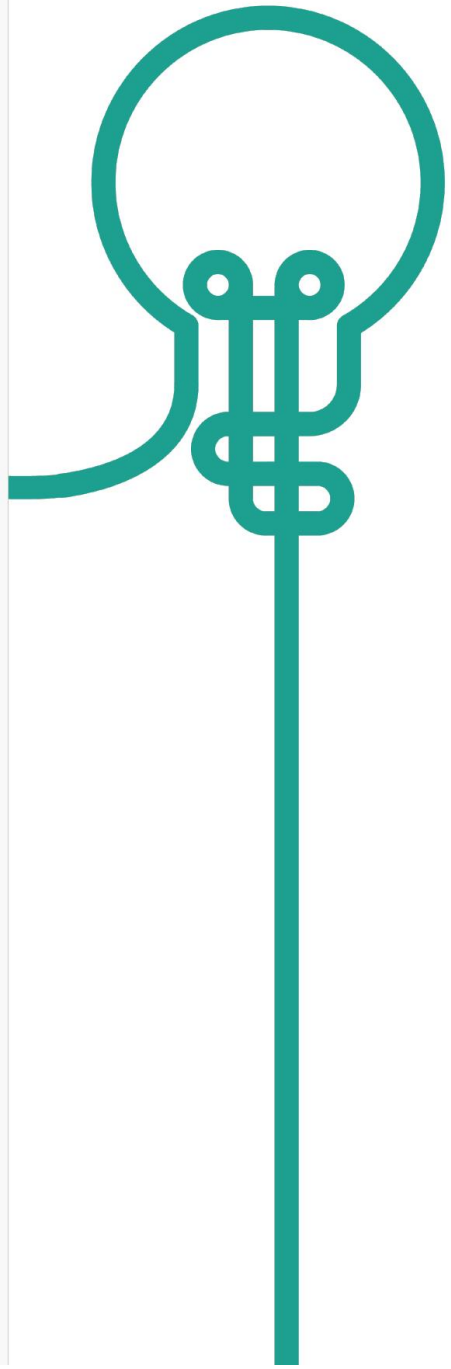
EXPECTED OUTCOMES FOR YOUR NEB PROJECT: The participation ladder allows a steady rise in the participation of the citizens or the community into the project, up to an ideally complete control over it. Participation is a fundamental working principle of the New European Bauhaus approach. The ownership of the project will be gradually handed from those who started it to the whole community to establish new governance models. Although it is a classic tool, it can be used to design visions of the future and address all ambitions within the "inclusion" value: to include, to consolidate, to transform and the "participatory processes" working principle: to consult, to co-develop, to self-govern.

DIFFICULTY: medium **TIME:** 90 minutes **WHAT YOU NEED:** [worksheet](#), pens, sticky notes

GROUP: small groups (5 ppl), plenary.

- Used in: all projects
- Easy to adapt online on a collaborative board.
- Iterate and refine.
- You can use the results in further exercises like [The empathy map](#), [SWOT meets NEB](#).
- Learn more about the initial idea: Arnstein, S. A. (1969) A Ladder of Citizen Participation. *Journal of the American Planning Association*, 35 (4), 216-224.





ILLUSTRATIVE TOOL (extract from the NEB Toolbox): IDENTIFICATION PHASE

HOW TO USE THIS TOOL: A STEP-BY-STEP GUIDE

1. (10 min) Start the exercise by explaining the participation ladder and its different steps (Informing, Consulting, Involving, Collaborating, Empowering). Provide a clear overview of each level and the increasing levels of engagement and decision-making authority.
2. (5 min) Clearly communicate the goals and objectives of the exercise, emphasising that active participation and engagement are encouraged. Explain that in the result you will find the opportunities for participants to move up the ladder and have their voices heard.
3. (30 min) Initiate a group discussion where participants can express their opinions and ideas, discussing the five phases.
4. (30 min) Back to plenary, invite each group to share their recommendations to the wider group, indicating recommendations how the community can be included. Ask the participants to incorporate in your project plans input in decision-making processes using the overview on the worksheet.
5. (10 min) Recognize and acknowledge efforts and ideas in terms of participation levels. Facilitate discussions to ensure that all participants are aware of the ladder and its different levels. Prompt them to consider ways to increase their level of engagement and decision-making authority within the entire project you are implementing and beyond.
6. (5 min) At the end of the exercise evaluate the effectiveness of incorporating the participation ladder. Seek feedback from participants on their experience with the ladder and its impact on their engagement. Use this feedback to refine and improve future exercises and steps in the project development.



ILLUSTRATIVE TOOL (extract from the NEB Toolbox): EXPLORATION PHASE

Tailored talks for inclusive social proofing of beauty and sustainability

CHALLENGE: You need more insights to inform designers decisions and make sure the local understanding of beauty and sustainability is integrated. Tailored talks for various groups involve targeted discussions that foster integration of the specific needs, interests, and backgrounds of diverse participants. This will help designers gain a deep understanding of the needs and pain points of the intended users. In these conversations designers can identify the specific problems that need to be addressed and the opportunities for improvement.

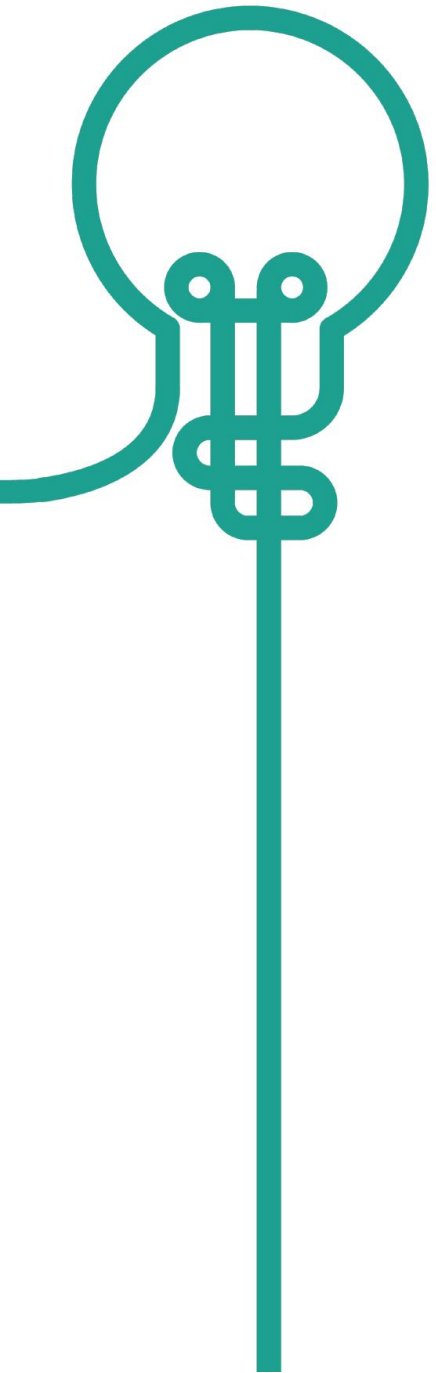
MAIN GOAL: User research is a fundamental aspect of the design process that involves gathering data and understanding the preferences of the end-users or target audience. In the context of the New European Bauhaus initiative, user research is essential for creating human-centred and inclusive design solutions that respond to the real-world challenges and aspirations of citizens and communities. Furthermore, by focusing on “sustainability” you can re-entanglement humans with their surroundings. Without a proper user oriented approach, designers may rely on assumptions or personal biases, which can lead to ineffective or exclusionary designs. Inclusive social proofing talks help to uncover actual user insights and avoid relying on unfounded assumptions.

EXPECTED OUTCOMES FOR YOUR NEB PROJECT: Dialogue between experts and end users focusing on NEB values, concrete suggestions to design for all.

DIFFICULTY: low **TIME:** 70 minutes **WHAT YOU NEED:** presentation of the project and the New European Bauhaus initiative, results from other exercises **GROUP:** size of the group depending on the needs

- Used in: Communauté de Communes du Bassin de Pompey, Cēsis
- Learn more about “re-entanglement” bringing cities back to earth. Bauhaus Earth.
[Toward Re-Entanglement: A Charter For the City and the Earth.](#)





ILLUSTRATIVE TOOL (extract from the NEB Toolbox): EXPLORATION PHASE

HOW TO USE THIS TOOL: A STEP-BY-STEP GUIDE

1. **(10 min)** Explain the goals of incorporating the end users opinions on beauty and sustainability for the session. Emphasise that the focus is to understand the needs, challenges, aspirations and include a variety of perspectives. Emphasise the potential benefits and impact of the New European Bauhaus projects for each group. Highlight how their involvement and contributions can make a difference in achieving the project's goals.
2. **(50 min)** Make the tailored talks interactive by showing pictures, maps or movies from the area to be transformed. Invite inspirational speakers from the community, young people, activists, artists and designers (architects) working on the concept to encourage active exchange. Chose the topics based on the characteristics of the space and structure the talks to address placed-based challenges (e.g. inclusive design in urban centres, such as city squares, parks, and pedestrian zones or discuss ideas for making housing more sustainable, aesthetically pleasing, and adaptable to diverse lifestyles and abilities, investigate the design requirements of cultural centres, museums, theatres, and sports facilities, discuss ideas for creating sustainable and inspiring learning environments, consider the challenges and opportunities for inclusive design in natural and rural settings and discuss sustainable approaches to preserve and enhance the beauty and accessibility of these areas, explore ways to make public spaces like transportation hubs, such as airports, train stations, and bus terminals or commercial areas accessible and pretty). You know the guiding topic by now. You can also focus on often overlooked details that could be part of your bigger picture in the project, for example how to integrate EV fast chargers in the city landscapes in a socially acceptable way.
3. **(10 min)** Be prepared to adapt your tailored talks based on the dynamics and feedback from the group. Be open to incorporating their insights and suggestions during the workshop to ensure that the content remains relevant, engaging, and easy to understand. Close the session by providing opportunities for continued engagement and reflection of the cultural specificities of the place. Share information on next steps in the project, encourage further discussions or collaborations, and facilitate networking among participants.



ILLUSTRATIVE TOOL (extract from the NEB Toolbox): REFINEMENT PHASE

Level(s)

CHALLENGE: Your project targets a transformation of a pre-existing building that performs badly in sustainability standards (like saving resources, reducing consumptions) or you are about to design a new building without knowing how to assess its environmental impact. You need a reliable solution and a tested tool that provides a systematic approach to measure and support improvements throughout the entire lifecycle of a building, from initial design to end of its first life.

MAIN GOAL: Level(s) is a digital tool that utilises the European framework for sustainable buildings to offer a comprehensive assessment of the sustainable performance of building environments. It caters to both existing and future buildings and serves as a common language for evaluating and reporting sustainability aspects. By using Level(s), individuals and organisations can easily apply circular economy principles in the built environment. It acts as a user-friendly entry point for integrating sustainability considerations into building design and operation.

EXPECTED OUTCOMES FOR YOUR PROJECT: You will have a clear overview on how the building environment foreseen in your project will perform in terms of sustainability in areas as such: air pollution, materials life cycles, use of water, adaptation and resilience to climate change, healthy and comfortable spaces. You will be able to integrate the NEB values and working principles, contributing to the wellbeing of the people living in the area. Take advantage of working with technical data in a participatory way. You can also include a transdisciplinary approach here and try to explain how beauty can be achieved through solid technical foundation, in addition supporting the environmental sustainability of the site.

DIFFICULTY: high **TIME:** 80min **WHAT YOU NEED:** access to the internet, an account on the EU portal **GROUP:** experts or citizens guided by a facilitator

- Suggested by the TA experts.
- This is an online tool.
- You can use the results in the Reflexive monitoring tool.
- To use this tool you will need a lot of specific data beforehand. You can use the tool with your core team, prefill the form and continue during the workshop or try to explain the indicators and use the tool together with the stakeholders. Remember that some information will be very “technical” and not accessible for some of the participants. Find the best way and invite experts to co-facilitate the implementation of the tool if needed.



ILLUSTRATIVE TOOL (extract from the NEB Toolbox): REFINEMENT PHASE

HOW TO USE THIS TOOL: A STEP-BY-STEP GUIDE

1. **(10 min)** If you are going to integrate this tool in your workshop, begin the session by providing an overview of the Level(s) European framework for sustainable buildings. Explain that Level(s) is a voluntary reporting framework designed to assess and improve the sustainability performance of buildings throughout their life cycle. You need to register or log in with a valid EU account [here](#). Access the Calculation and Assessment Tool (CAT) [here](#) and follow the step-by-step instructions. Clearly define the objectives of the session for your NEB project.
2. **(30 min)** First create a project on the portal adding relevant information on your residential or office building. You need to specify the country and the climatic zone and add various information on the building. Collect them in advance to have all data handy. Once you have created your project, you can create an assessment, choose the indicators, complete the assessment by specifying 6 macro-objectives (Greenhouse gas and air pollutant emissions, Resource efficient and circular material life cycles, Efficient use of water resources, Healthy and comfortable spaces, Adaptation and resilience to climate change, Optimised life cycle cost and value). For each macro-objective you will need to specify the "level" of assessment (from conceptual design to in-use performance). In the next step you can add more details concerning your project and parameters. Some of the required information needs a certain level of expertise and knowledge of the project design, please consider it before starting.
3. **(20 min)** Continue by facilitating a brainstorming session on the obtained results. Remember to use clear and accessible language. Encourage participants to discuss the challenges the local community might face in implementing sustainable practices in building design and construction. Facilitate a discussion where participants can share their experiences, insights, and concerns related to the New European Bauhaus principles and the Level(s) framework. Ideally you will invite an expert to take part in the exercise who will be able to mediate between citizens and technical data, and answer questions.
4. **(10 min)** Guide the session towards identifying actionable steps for implementing the strategies and solutions developed. Discuss how participants can incorporate the Level(s) framework into their own residential buildings or advocate for its adoption in the entire city, neighbourhood, village.
5. **(10 min)** Conclude the workshop by summarising the key findings, insights, and how the obtained report will influence your further work. Emphasise the importance of continued collaboration and knowledge sharing among participants, and consider establishing a communication platform where you will inform the stakeholders about the further application of the obtained results.



NEW EUROPEAN BAUHAUS FITNESS CHECK

- The NEB assessment framework helps to refine the project, aligning it with the values and working principles of the NEB.
- Guiding questions provide a link between values and working principles from one side and tools from the other.
- However, tools can be applied with flexibility and are not uniquely attached to a single NEB value or working principle.

Sustainability		
Question	Your answer	Still open? GO TO TOOL
How does the project incorporate principles of the circular economy, resource efficiency, and sustainable design?		<u>Level(s)</u>
What strategies are employed to minimise waste, promote recycling, and reduce the project's environmental footprint?		<u>Co-impact tool</u>
How can the project contribute to the regeneration and restoration of natural ecosystems, biodiversity, and ecological balance?		<u>Building blocks</u>

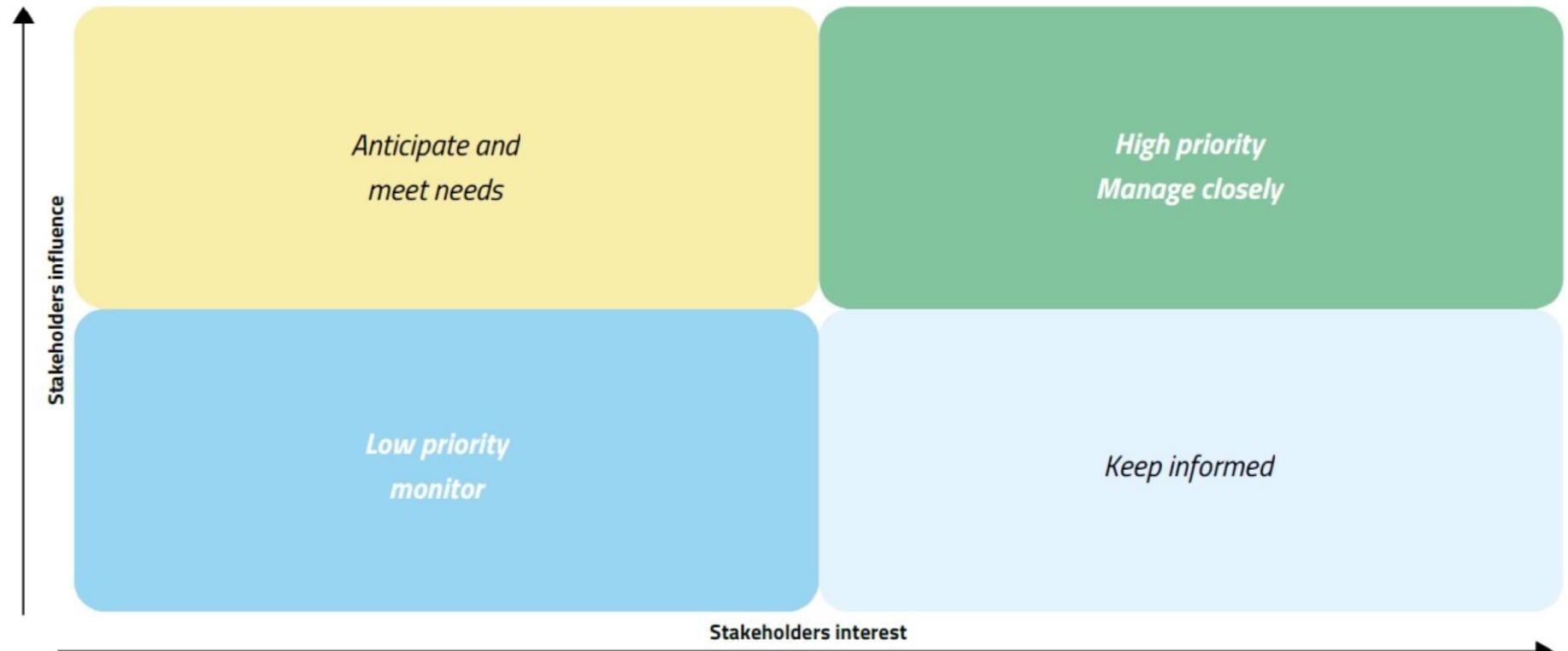
Participatory processes		
Question	Your answer	Still open? GO TO TOOL
How can we engage stakeholders through consultations gather their feedback, insights, and perspectives on the project's objectives and proposed solutions?		<u>Tailored talks for social proofing of beauty and sustainability</u>
How can we foster collaborative co-development with stakeholders, inviting them to actively contribute to the project's design and decision-making?		<u>SWOT meets NEB</u>
What structures and support can be provided to facilitate effective self-governance and ensure that stakeholders have the resources and autonomy to drive the project's progress?		<u>Problem-solution tree</u>

Where have the tools been used?

- **Stakeholder mapping:** Gabrovo, Tărlungeni, Pampilhosa, Horta, Reșița, Ajka, Katerini, Nicosia, Cēsis, Kutina, Alberstlund, Riihimäki, Cantù, Ravne na Koroškem, Sant Boi de Llobregat, Kalmar
- **Participation ladder:** In all projects
- **Senses walk:** Alūksne
- **The empathy map:** Horta
- **Doodling architectural concepts:** Tărlungeni
- **SWOT meets NEB:** Alūksne, Katerini, Nicosia
- **Sustainable business model canvas:** Cantù, Horta, Reșița, Níjar, Dubrovnik, Gabrovo, Ajka
- **Building blocks:** Pampilhosa
- **Design citizens' fora:** Horta, Ravne na Koroškem
- **Tailored talks:** Communauté de Communes du Bassin de Pompey, Cēsis, Ravne na Koroškem, Kalmar
- **Backcasting:** Riihimäki, Katerini, Horta
- **Problem solution tree analysis:** Katerini, Nicosia, Pampilhosa
- **Risk assessment:** Níjar, Sant Boi de Llobregat, Kutina
- **Reflexive monitoring tool:** Níjar
- **Benchmarking study:** Cēsis, Níjar, Ajka, Ravne na Koroškem, Kalmar



WORKSHEET (example): STAKEHOLDER MAPPING



[illegible]

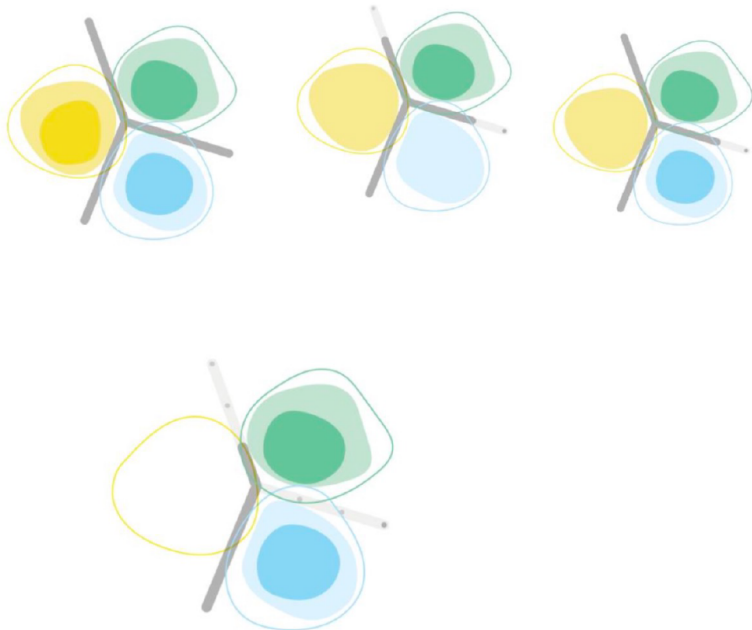
How do you know which tools you need? Start with your needs!

BUILD YOUR OWN NEB FLOWER - AT THE BEGINNING, DURING AND BEYOND THE PROJECT!

NEB values and working principles - integration is key

To gain a deeper understanding of how values, working principles, and associated ambitions shape the transformation process, we highly recommend reading the NEB COMPASS. This resource provides valuable insights on how these elements work together and how they are interrelated. It can serve as a guide for designing your own NEB "flower" which will drive the transformation towards the desired change.

For more inspiration and examples, we encourage you to explore PART 2 of the TOOLBOX, which showcases flowers from the 20 projects involved in the Technical Assistance. It is important to note that ambitions should be projected to the future. Once you achieve at least level 1 of ambitions in each value and working principle, your project becomes a NEB one. You can define higher ambitions and gradually become an expressive exemplification of this framework!



Sketch your own NEB flower

ILLUSTRATIVE PROJECT FICHES

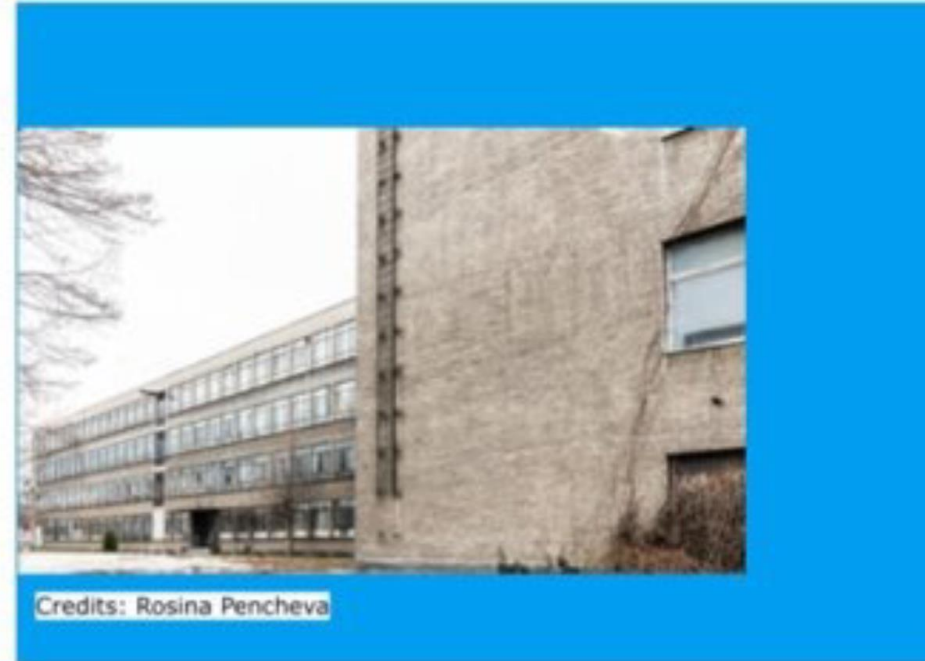
and their features

Christo and Jeanne-Claude Center, Gabrovo, (BG)

BACKGROUND INFORMATION:

Inhabitants: 51,881 (2021)

The municipality in Gabrovo aims at transforming a former textile school building into an inclusive art centre honouring the Gabrovo-native and world-renown artist Christo and his wife and artistic partner Jeanne Claude. The project aims to address local and global social challenges through artistic licence, cross-disciplinary sustainable and future-oriented solutions.



Credits: Rosina Pencheva

"The NEB approach was close to our ideas about developing the Center - through an inclusive process, with sustainability in mind, and when we speak of Christo and Jeanne-Claude, beauty simply had to be there. Yet, the project disciplined us to really put the NEB principles in practice, no matter how stressed for time and resources we were and gave us the tools to do so."

Margarita Dorovska, Project Team Member

NEEDS:

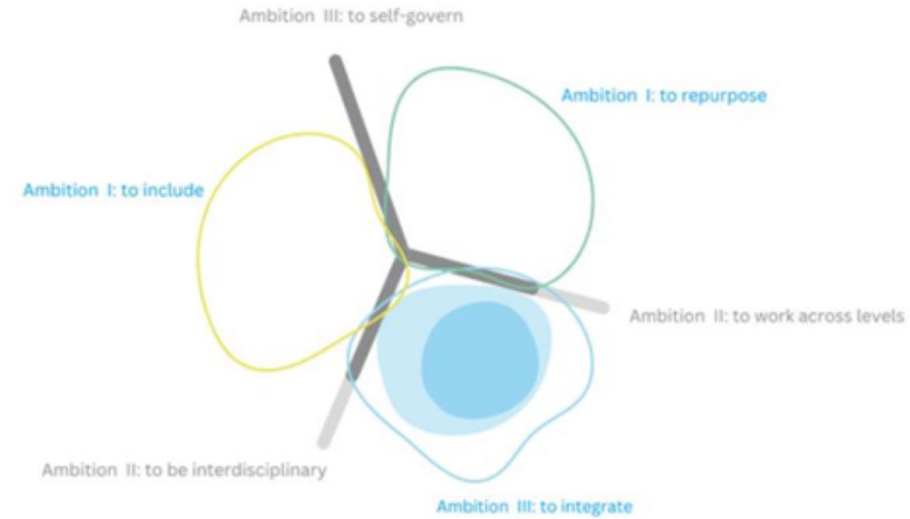
- Establishment of a clear governance structure
- Identification of a long-term financial plan
- Preparation of guidelines for a comprehensive vision
- Provision of advice on potential sustainability strategies for the building
- Development of an architectural brief

TECHNICAL ASSISTANCE AREAS:

- Renovation of existing buildings and public spaces in a spirit of circularity and carbon neutrality
- Preservation and transformation of cultural heritage
- Regeneration of urban or rural space

TECHNICAL ASSISTANCE IMPROVEMENTS:

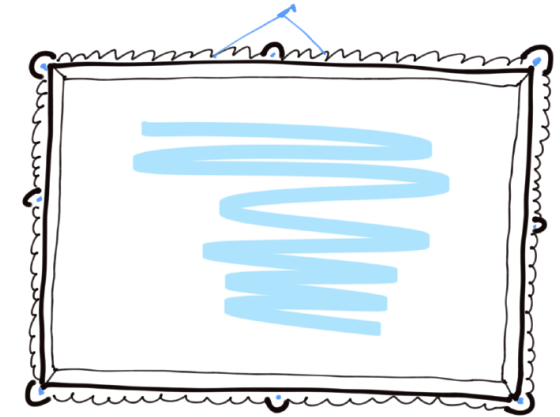
- Develop and manage site knowledge- improvement of the energy strategy.
- Break down the walls between disciplines (Engineers, architects, civil servants, biologists, artists, etc.)
- Set up innovative business models (co-financing, Crowdfunding, etc.)



IMPLEMENTATION ROADMAP:

- Formulation of an Organisation Charta as a basis for a future creative hub
- Finalisation of the sustainability plan
- Preparation of an architectural competition and selection of best proposals
- Development of a business model for financial sustainability

➤ LOCAL VOICES ...QUOTES FROM PROJECT OWNERS



"NEB helped us to understand, crystallise and visualise the options we had for turning the old power plant of our city into the "Urban Powerhouse" - a living room for our citizens."

"Through the NEB we could refurbish and conceptualize the Bank's heritage building into Faial Island Arts Bank: a flexible, sustainable, and beautiful platform that gives voice to the community, becomes the islanders connecting place and combines physical and virtual interaction."

Albertslund — Riihimäki — Katerini — Horta — Sant Boi de Llobregat

"The NEB approach started a new transformation in the municipality that will bring us in closer dialogue with new sets of stakeholders when we have to take important decisions. In this specific case, we developed a multidisciplinary method that not only allows us to better design new neighbourhoods that are biodiverse, beautiful and inclusive but also measure how biodiversity, aesthetics and inclusiveness are performing over time."

"NEB helped us mainly by training us in the consultation and engagement of all stakeholders before the final design of the project."

"Through NEB, we have been able to understand all the complexity and dimensions within these three values and their interrelation through a problem solving approach. We have now got a range of strategies to tackle them."

What did we learn while working on the NEB Toolbox?

Stakeholders may be scared and surprised that they can talk about their needs!

The simplicity of NEB is also a major difficulty!

There are no lower or higher ambitions, there are unique processes!

No one wants theory!

It's hard to change the way of thinking, but NEB helps!

Integration of the values and working principle is crucial!



People miss nature (green is better than smart)!

You can discover beauty everywhere!

Ugliness is defined by a lack of perceived value to residents!



Thank you!

**Building the future: Integrating NEB
values and principles in Heritage
Regeneration under THRIVE
An EUI capacity building event in Ireland
12-13 November 2024, Limerick
Ireland**



Introduction to the hands-on exercise

- **Aim:** To get acquainted and get practical experience on the use the NEB toolbox and particularly on stakeholder engagement
- **How:** Working on a printed canvas to get practical experience on one of the stakeholder engagement tools
- **Overall rationale:**
 - Break into four groups
 - Presentation of the case study
 - Group work in three preassigned tables
 - Discussion of results and quick wrap up

Room Allocation

Group 1: Harris
Suite/City View
Suite

Stay here in Room 1

(stay with Eileen)

Group 2:
Henihan Suite

Move to:

Room 2

(follow Matthew)

Group 3:
O'Brien Suite

Move to:

Room 3

(follow Liat)

Group 4:
Wogan Suite

Move to:

Room 4

(follow Ed)



**COFFEE
BREAK**



**Plenary
discussion and
Reflections**



Closing words



Rialtas na hÉireann
Government of Ireland



Có-mhaoinithe ag an
Aontas Eorpach
Co-funded by the
European Union



Tionól Réigiúnach
an Deiscirt
Southern Regional
Assembly



New European Bauhaus
beautiful | sustainable | together

THRIVE & the New European Bauhaus

Rose Power, Programme Executive, Southern Regional Assembly
13th November 2024



Rialtas na hÉireann
Government of Ireland



Có-mhaoinithe ag an
Aontas Eorpach

Co-funded by the
European Union

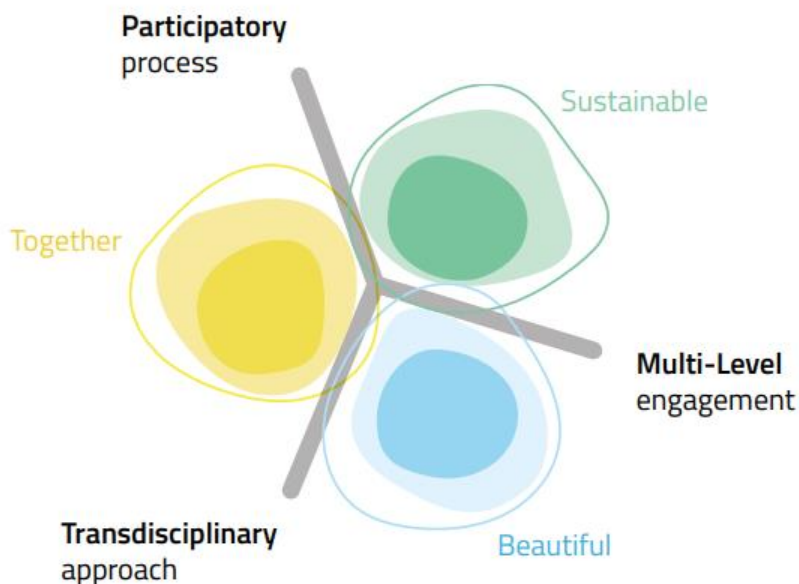


Tionól Réigiúnach
an Deiscirt

Southern Regional
Assembly

New European Bauhaus Compass

The New European Bauhaus Compass will assist you in embedding the NEB Principles and Values into your THRIVE projects.



The New European Bauhaus approach facilitates us to bring together all members of our diverse societies, cutting across disciplines and participating at all levels.

This is not just about meeting the minimum regulatory requirements. The New European Bauhaus is an approach to imagine and build a more sustainable, beautiful and inclusive future for our towns and cities.

Valuing the aesthetics of your projects going beyond functionality and seeking to create a better quality of experience and style.

Valuing the sustainability of your projects that seek to contribute to climate goals, reduce pollution, enhance circularity and biodiversity.

Valuing the inclusion in your projects of all members of your community ensuring equality, accessibility and affordability for all.

https://new-european-bauhaus.europa.eu/get-involved/use-compass_en



Rialtas na hÉireann
Government of Ireland



Có-mhaoinithe ag an
Aontas Eorpach

Co-funded by the
European Union



Tionól Réigiúnach
an Deiscirt

Southern Regional
Assembly

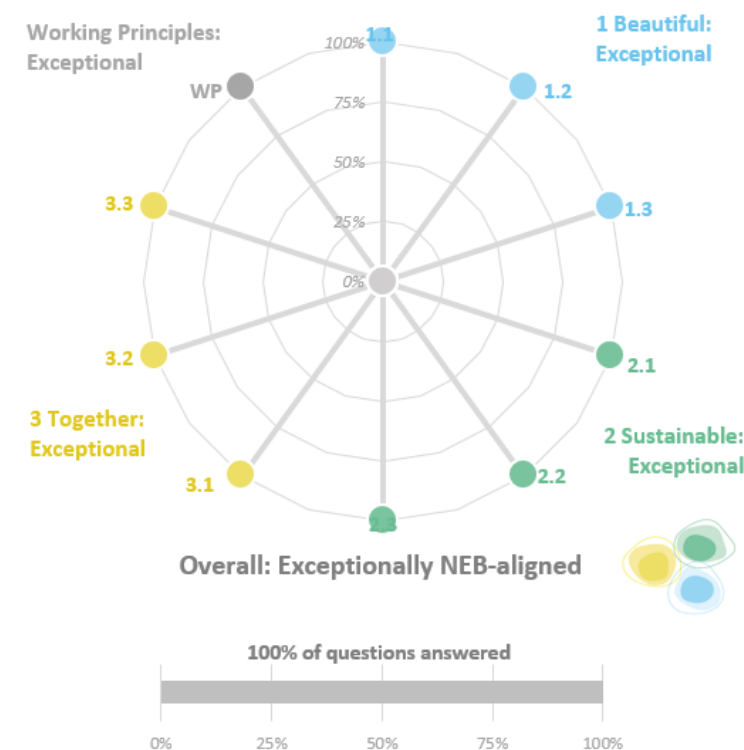
New European Bauhaus Toolbox & Small Projects Checklist

The New European Bauhaus Toolbox was designed to support projects by providing practical tools to facilitate your project incorporating the Principles and Values of the New European Bauhaus.

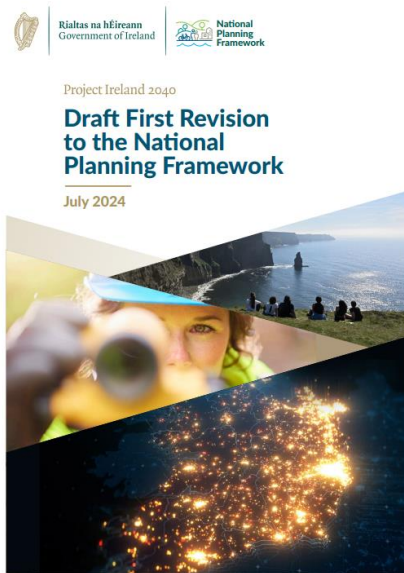
The New European Bauhaus Toolbox can support your THRIVE project as the tools were designed to support the following:

- Renovation of existing buildings in a spirit of circularity and carbon neutrality.
- Preservation and transformation of cultural heritage.
- Regeneration of urban spaces.

Some of these tools you will have used during this event but there are many more tools to be discovered and utilized for each stage of your THRIVE project.



https://new-european-bauhaus.europa.eu/get-involved/use-toolbox_en



THRIVE – NEB – European, National, Regional and Local Interests Aligned

- THRIVE incorporates New European Bauhaus scoring criteria for all projects.
- First revision of the National Planning Framework (NPF) for Ireland, identifies ERDF and THRIVE as a key enabler of the National Strategic Outcome for Enhanced Amenities and Heritage.
- THRIVE Projects eligible to compete at the Festival of the New European Bauhaus over the coming years.



Rialtas na hÉireann
Government of Ireland



Có-mhaoinithe ag an
Aontas Eorpach

Co-funded by the
European Union



Tionól Réigiúnach
an Deiscirt

Southern Regional
Assembly

The Future for THRIVE and the New European Bauhaus



- The Managing Authorities (Northern & Western Regional Assembly and the Southern Regional Assembly) will open THRIVE Strand 2 Call 2 in January 2025.
- Funding of €25 million will be available in the Northern & Western Region.
- Funding of €60 million will be available in the Southern and the Eastern & Midland Regions.

Get Ready!!!



- Attend Online [Lessons Learned and Good Practices](#) from THRIVE Strand 2 Call 1 – 12th December 2024
- Review the [New European Bauhaus Compass and Toolbox](#)
- In advance of submitting your Application complete the [Small Projects Checklist](#) to ensure your project is aligned to the values and principles of the New European Bauhaus



Rialtas na hÉireann
Government of Ireland



Có-mhaoinithe ag an
Aontas Eorpach
Co-funded by the
European Union



Tionól Réigiúnach
an Deiscirt
Southern Regional
Assembly



Applying New European Bauhaus Beyond THRIVE

Now that you have created a New European Bauhaus approach and built your inclusive citizen and stakeholder group, we encourage you to use this approach beyond your THRIVE Project.

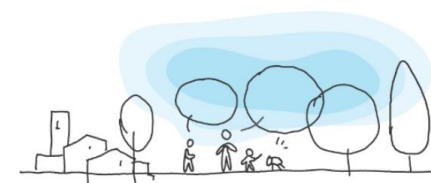
Your citizens and stakeholders are now engaged, they may expect this level of participation and co-creation for future projects.

Using a transdisciplinary approach with multi-level engagement and a participatory process will lead to more sustainable, more inclusive and more beautiful strategies, plans and projects into the future.

This approach can be used for all projects and funding applications in your towns or cities into the future.



New European Bauhaus
beautiful | sustainable | together



New European Bauhaus
beautiful | sustainable | together





Rialtas na hÉireann
Government of Ireland



Có-mhaoinithe ag an
Aontas Eorpach
Co-funded by the
European Union



Tionól Réigiúnach
an Deiscirt
Southern Regional
Assembly



Thank You

- On behalf of the Northern & Western Regional Assembly and the Southern Regional Assembly we would like to extend our sincere thanks to the [European Urban Initiative Team](#) for their outstanding work in the creation of this informative and memorable event.
- A special thanks to the [Mayor of Limerick](#) – John Moran for opening the event and welcoming us all to Limerick City.
- Our gratitude also extends to the [team from Limerick City and County Council & Limerick Twenty Thirty](#) for the work in creating a wonderful and interesting study visit.
- Thank you to all the [Irish and European case studies](#) that exhibited at the event and provided a valuable learning opportunity for our Local Authorities.
- Finally, we would like to thank you our [Local Authorities](#) for taking time out of your busy schedules to participate in this event.

**We would like to wish you the very best of
luck with your THRIVE applications for 2025**



THRIVE Call 2 – Spring 2025

For further information please contact:

Rose Power – rpower@southernassembly.ie or 087 71588258 or

Yvette Keating – ykeating@nwra.ie or 087 1659866

Additional information is available at:

<https://www.southernassembly.ie/eu-programmes/sem2127>

<https://www.nwra.ie/thrive/>



Farewell Lunch