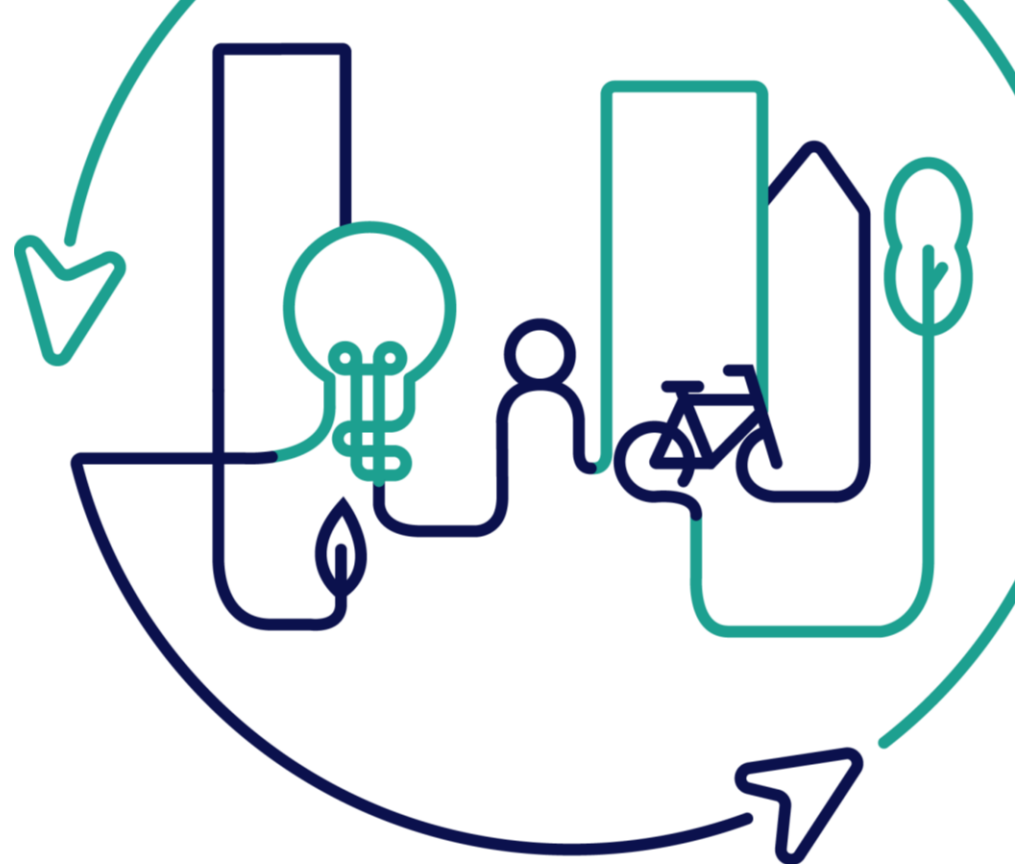


EUROPEAN U R B A N INITIATIVE



Co-funded by
the European Union

BUILDING THE FUTURE: INTEGRATING NEB VALUES AND PRINCIPLES IN HERITAGE REGENERATION UNDER THRIVE AN EUI CAPACITY BUILDING EVENT IN IRELAND

12-13 NOVEMBER 2024, LIMERICK, IRELAND

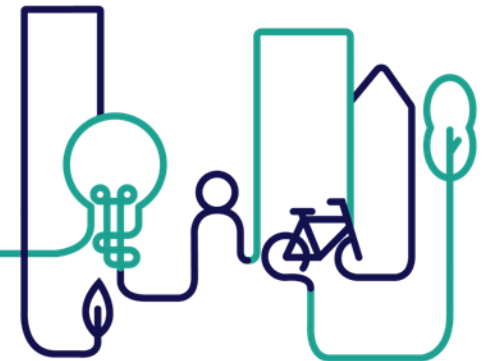
Welcome to Limerick

David Kelly, Southern Regional Assembly, Director

John Moran, Mayor of Limerick

Tatiana Coelho de Oliveira, DG REGIO, Policy Assistant

Eilish O'Loughlin, European Urban Initiative, Capacity Building Unit Head





Welcome !

- **National event:** a capacity building event dedicated to developing the capacity of THRIVE beneficiaries and applicants, consisting of local authority multi-disciplinary teams, to integrate NEB values and principles in the design and implementation of local strategies and projects
- **Who is around:**
 - 26 Irish local authorities represented
 - 3 Regional Assemblies represented
 - Participants from 12 countries outside Ireland (CY, GR, HR, DE, FR, HU, LV, IT, MT, RO, ES, BE)
 - 16 speakers from abroad

BUILDING THE FUTURE: INTEGRATING NEB VALUES AND PRINCIPLES IN HERITAGE REGENERATION UNDER THRIVE AN EUI CAPACITY BUILDING EVENT IN IRELAND

12-13 NOVEMBER 2024, LIMERICK, IRELAND

Practical details

EUROPEAN
URBAN
INITIATIVE

BUILDING THE FUTURE:
INTEGRATING NEB VALUES
AND PRINCIPLES IN HERITAGE
REGENERATION UNDER THRIVE
LIMERICK, IRELAND
12-13 NOVEMBER 2024

Brent Mostert
Galway County Council

AGENDA
SCAN ME



Interested to learn more
and get inspiration from
peers around Europe?

CHECK OTHER CAPACITY
BUILDING OPPORTUNITIES HERE:
WWW.URBAN-INITIATIVE.EU/CAPACITY-BUILDING

WORKSHOP 1
Group 1 – Nano Nagle
Place, Cork

WORKSHOP 2
Group 2 – ROD-Cre-
ative and Learning
space

SITE-VISIT GROUP
Group 1



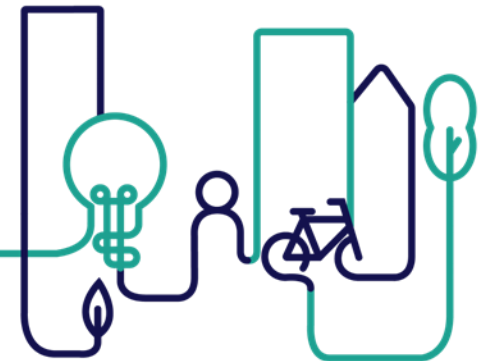
WIFI FREE ACCESS

BUILDING THE FUTURE: INTEGRATING NEB VALUES AND PRINCIPLES IN HERITAGE REGENERATION UNDER THRIVE AN EUI CAPACITY BUILDING EVENT IN IRELAND

12-13 NOVEMBER 2024, LIMERICK, IRELAND

Our Agenda – Day 1

Curriculum designers: Eileen Crowley & Eleni Feleki, EUI Experts



Agenda Day 1

09.45 – 10.15 Welcome and Registration

10.15 – 10.45 Opening session

10.45 – 11.00 Practical Details

11.00 – 11.30 Panel discussion

11.30 – 11.50 Inspirational keynote

11.50 – 12.00 Introduction to the Exhibition

12.00 – 13.45 LUNCH & Walking through the Exhibition

13.45 – 13.50 Introduction to the afternoon

13.50 – 14.00 Setting the scene for the study visits and introduction to hands-on exercise

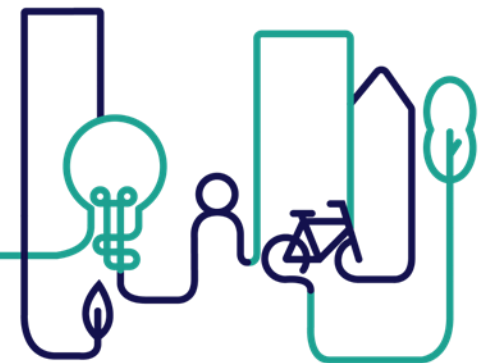
14.00 – 14.20 The guiding framework for decision and project makers wishing to apply the NEB principles and values

14.20 – 15.50 Hands on exercise on the application of NEB principles and values in different projects or initiatives

15.50 – 16.15 COFFEE BREAK

16.15 – 18.30 Site Visits

19.30 – Dinner

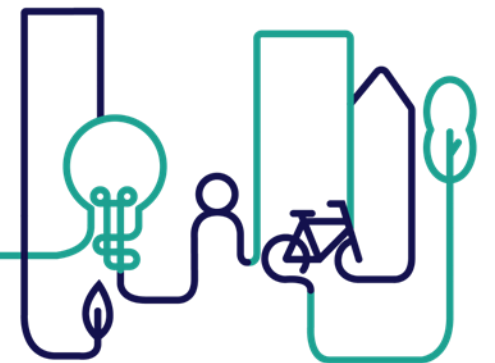




Learning Grid

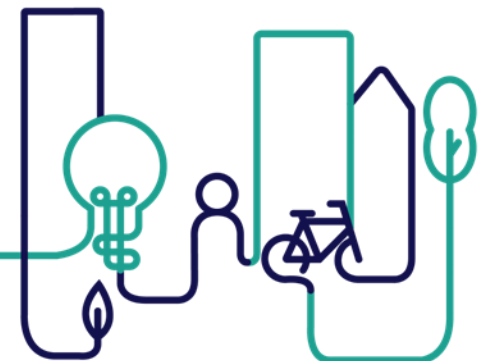
Learning Grid

- **What is the LAG?** The individual LAG is a simple tool to allow you to capture interesting things you hear or learn during the event.
- **Who is it for?** The individual LAG is for everyone.
- **What do I need to do?** All participants should capture the key learnings by responding the first two questions, during each session, and note any references to specific projects, good practice etc. Also refer to specific actions which you would like to follow up in response to the third question. There is also an open space for comments and questions at the end.



Learning for ALL

November 12 th	November 13 th
What are the most relevant take aways for you today?	
How did you reach them? (panel, hands on exercise, presentation, site visit, discussion etc)	
List of actions you will undertake after the event, related to your take aways?	
Any comments or questions	





**Panel
discussion
NEB: A
Buzzword or a
Breakthrough?**

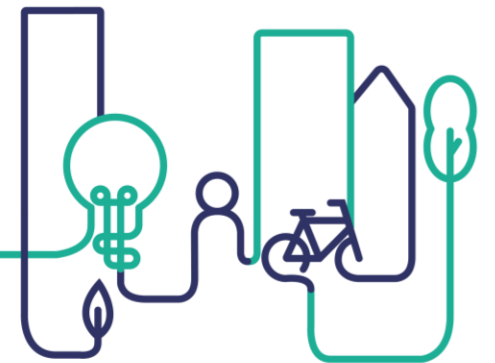
BUILDING THE FUTURE: INTEGRATING NEB VALUES AND PRINCIPLES IN HERITAGE REGENERATION UNDER THRIVE AN EUI CAPACITY BUILDING EVENT IN IRELAND

12-13 NOVEMBER 2024, LIMERICK, IRELAND

NEB: Buzzword or Breakthrough

Moderated by Matthew Baqueriza-Jackson (EUI Expert) and including:

- Laura Hagemann, Joint Research Centre, Policy Officer of the NEB
- Kieran McCarthy, Cork City Council, Southern Regional Assembly, and Committee of the Regions Member
- Tatiana Coelho de Oliveira , DG REGIO, Policy Assistant
- Nicki Matthews – NEB Irish Contact Point



Co-funded by
the European Union



Thank you!

**Building the future: Integrating NEB
values and principles in Heritage
Regeneration under THRIVE
An EUI capacity building event in Ireland
Limerick, 12-13 November 2024**



**Keynote
speech**



Thank you!

**Building the future: Integrating NEB
values and principles in Heritage
Regeneration under THRIVE
An EUI capacity building event in Ireland
12-13 November 2024, Limerick
Ireland**



**Introduction
to the
Exhibition**

SHARE - Sustainable Housing Accommodation for a Regenerative Exchange



📍 Spain
🌍 COUNTRY
🏠 Fuenlabrada

👤 48.797.875
👥 POPULATION
📅 194.886

💰 6.150.000 EUR
📊 FUNDING

🏆 80% EUI Innovative Actions and co-financing and 20% own Funds
📈 FUNDING SOURCES

🏢 Fuenlabrada Municipality
👤 PRACTICE OWNER

🏠 Innovative Housing Solutions
📌 TOPIC OF PRACTICE



SHARE is a comprehensive community revitalisation solution to improve life in central Fuenlabrada. The area has been grappling with a range of challenges in recent decades, from deteriorated and vacant housing, to disused facilities, closed businesses and an ageing rate well above the city average. While most housing solutions imply construction, new land consumption or just sharing homes, SHARE's solution wants to experiment a new housing model by rehabilitating a disused and symbolic school in the city centre under the NEB criteria.

📌 ABOUT

Fuenlabrada's great challenges consists of revitalising in a sustainable way the centre fostering shared social values while facilitating adequate housing and community environment for both groups: the over-65s and the under 35-s.

📌 CITY STRATEGY

- Strong partnership.
- Domain of the space to be rehabilitated.
- Political commitment and willingness

📌 ENABLING CONDITIONS

- Fuenlabrada Youth Council.
- Participation Councils of the municipal centers for the elderly
- Local associations (youth and elderly associations).
- Institute for the Elderly and Social Services.

📌 KEY STAKEHOLDERS

Fuenlabrada was selected as an EUI Innovative Actions Project in June 2023. After a first year of preparatory work, it entered the implementation phase. More results and news can be found on the EUI webpage or on PORTICO.

📌 RESULTS AND IMPACTS

SHARE's solution focuses on creating accessible, high quality living environments for seniors and young people since they are those who suffered the housing problem the most. The project is based on three principles: 1) Reuse, rehabilitation and activation of community resources for sustainable local development; 2) Affordable, quality housing suitable for people of different ages; 3) Protective environments for early prevention of dependency

📌 STRONG POINTS

- Social challenges:**
 - to facilitate access of elderly to housing and care system that protects their autonomy in order to prevent dependency.
 - to facilitate access to housing for under 35 to foster stable life.
- Economic challenge:**
 - to enable young population that settles in the city centre to contribute to social, cultural and economic revitalisation of the area.
- Environmental challenge:**
 - to explore housing strategies that take into account sustainability and focus on the use of existing spaces, rather than the construction of new housing, to rehabilitate the city centre of Fuenlabrada.

📌 CHALLENGES



Integrating NEB values and principles in Heritage Regeneration under THRIVE
Limerick, Ireland 12-13 of November 2024



Nano Nagle Place Cork

📍 Ireland
🌍 COUNTRY
🏠 Cork City

👤 5.262.000
👥 POPULATION
📅 224.004

💰 24.012.178 EUR
📊 FUNDING

🏆 Phase 1: Donations Phase 2 - Loan
📈 FUNDING SOURCES

🏢 Presentation Sisters Order
👤 PRACTICE OWNER

🏠 Heritage Buildings, Community Hub,
🏛️ Museum
📌 TOPIC OF PRACTICE



Nano Nagle Place is a vibrant heritage site and cultural hub located in Cork, Ireland, dedicated to the legacy of Nano Nagle, an 18th-century pioneer of education for the poor. Once the site of her convent and schools, the place has been transformed into a community-driven space that celebrates history and social change. Visitors can explore interactive exhibits, gardens, and the historic convent, while the site also hosts educational programs and charities that continue Nano's mission. It's a unique blend of heritage, learning, and social sustainability

📌 ABOUT

The project contributes to the implementation of the strategic vision for the city as defined in the city's development plan 2022-2028. A city 'embracing diversity and inclusiveness and growing as a resilient, healthy, age-friendly and sustainable compact city with placemaking, communities and quality of life at its heart'. It embodies the strategic principles of a city of neighbourhoods and communities, enhanced built and natural heritage and a city of learning and culture.

📌 CITY STRATEGY

- Location and attractiveness of the site.
- Decision of the Sisters to set up a limited company and to entrust the whole endeavour to those Directors, from development to operation. The skill mix of the Board of Directors with their CEO.
- Involvement of the local community and City of Cork.
- The continuation of the social outreach and educational work of Nano Nagle
- The securing of financial viability for the early years of operation through a rental agreement.
- Procuring the right clients for rental of the Café; Good Day Deal with its strong ecological ethos attracts a wide clientele to the site.

📌 ENABLING CONDITIONS

- Attracting up to 90,000 visitors through the doors per year.
- In 2023, organised 10 festivals and over 70 events on site.
- Over 450 annual participant engagements in our community education programme.
- Successfully sourcing a significant number of institutional funding grants and donations from Corporates.
- Won European Museum of the year for 2022.

📌 RESULTS AND IMPACTS

Presentation Sisters; Cork city; Partners in social justice organisations and charities across Cork, Munster and Ireland; Institutional Funders across Ireland; Donors; Clients who rent Conference Space and Meeting Rooms; Tenants/Lessee who rent property from Nano Nagle Place

📌 KEY STAKEHOLDERS

- The integration of Heritage offerings and social justice projects within one space.
- The commitment to sustainability and biodiversity throughout the site.
- A universal and genuine welcome for all who visit.
- A Business model that provides opportunities for income generation.
- An attractive offering for Institutional Funders

📌 STRONG POINTS

- Local resistance to change
- Construction delayed by formal objections to planning.
- Conservation orders on old buildings.
- Complexity of site.
- Harmonious incorporation of a café in a quiet garden.
- Securing of an income stream adequate to future requirements.

📌 CHALLENGES

- Consultation with key stakeholders from an early stage in the process.
- Give in-depth consideration to the business model and funding streams that you will utilise when the project is up and running.
- Engage with the city on any future developments which will affect the area of the site/project.

📌 TRANSFER TIPS



Integrating NEB values and principles in Heritage Regeneration under THRIVE
Limerick, Ireland 12-13 of November 2024



Fábrica de Santo Thyrso Portugal

📍 Portugal
🌍 COUNTRY
🏠 Santo Tirso

👤 10.530.000
👥 POPULATION
📅 67.709

💰 9.500.000 EUR
📊 FUNDING

🏆 European Funds-National Strategic References, and Municipality Funds
📈 FUNDING SOURCES

🏢 Municipality of Santo Tirso
👤 PRACTICE OWNER

🏠 Rebuilding and transform old Factory
📌 in a Cultural and Creative Quarter
📌 TOPIC OF PRACTICE



The Fábrica de Santo Thyrso is a cultural and creative complex driving urban transformation through fashion, design, and creative industries. Inspired by modern urban renewal strategies, it combines business, culture, and leisure, creating a vibrant space for innovation and local entrepreneurship. This multipurpose quarter houses business incubation, research, and training, fostering a creative ecosystem where technology, global perspectives, and human imagination fuel sustainable solutions and societal impact.

📌 ABOUT

Fábrica de Santo Thyrso, founded in 1898, embodies urban renewal and cultural innovation in Santo Tirso. Revitalized since 2008, it aligns with policies for sustainable development, creating a "15-minute city" with improved transit options. The site now hosts regular cultural events, attracting diverse audiences, alongside a commercial area with restaurants, shops, and leisure spaces by the River Ave. This transformation fosters a vibrant community hub for residents and visitors alike.

📌 CITY STRATEGY

- Partnerships between the City Council and schools, vocational schools and universities, establishing classes in the city through the creation of a training and education center;
- Developing European projects with an international networking network;
- Establishing partnerships with local economic agents;
- A space made up of several areas that allows for diversified events in the areas of culture, sport, economy, music, conferences, open days, creative challenges, theater, international creative residences

📌 ENABLING CONDITIONS

- Preserved industrial heritage, transforming the factory into a cultural and tourist hub. It hosts exhibitions and events, boosting regional social dynamics.
- The modernization has attracted new investments and enterprises, contributing to the economic revitalization of the area.
- Embraces energy efficiency and eco-friendly practices.
- New businesses generate local employment.
- Cultural transformation boosts regional tourism.
- Enhances community bonds through cultural activities.
- Preserves heritage, fostering regional pride.

📌 RESULTS AND IMPACTS

University ESAD; University of Porto; University of Minho; Engineering School, CESA E Digital; Modatex.

📌 KEY STAKEHOLDERS

Good accessibility to Public transportation and dynamic context

📌 STRONG POINTS

- Funds to Financing the operation,
- Adapting the spaces to be redeveloped to the new sectoral policies, including the smart specialization strategy in Northern Portugal.
- Adapting buildings so that they are inclusive and sustainable, responding to today's societal challenges and environmental problems.
- Increasing the level of satisfaction of our institutional and sectoral partners, businesspeople, entrepreneurs and the general public with the new activities we want to offer in the future.

📌 CHALLENGES

- Co-creation between national and international partners in the areas of creativity, culture, economy, education, with local, national and international economic agents and public administration bodies;
- Fostering international partnerships and networking to increase the sharing and experimentation of new practices and methodologies. It is important to have a defined and articulated Master Plan involving the partners to make it easier to implement the actions.

📌 TRANSFER TIPS



Integrating NEB values and principles in Heritage Regeneration under THRIVE
Limerick, Ireland 12-13 of November 2024



**LUNCH &
Walking
through the
Exhibition**



Welcome back!

Please give us your feedback!

At future events please
START

At future events please
STOP

At future events please
CONTINUE



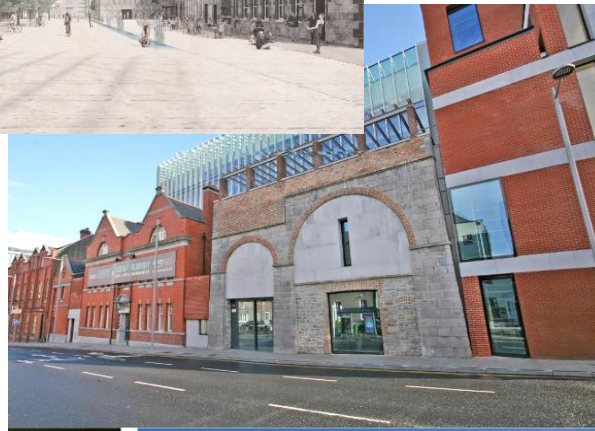
**Site visits:
Setting the
scene**

Setting the scene for the afternoon site visits

Aim: Investigate relevance with NEB values and principles

Sarah McCutcheon, Limerick City Council

- Mary's Cathedral
- Nicholas street
- King John's Castle



- Cleaves Riverside Quarter
- Gardens International
- Opera Square





Introduction to the hands-on exercise

- **Aim:** To get acquainted and get practical experience on the use of a self-assessment tool
- **How:** Assessment of a real project against the three NEB values through group work
- **Overall rationale:**
 - Break into four groups
 - Presentation of the case study by the owner
 - Group work in three preassigned tables each one assessing analytically one NEB value
 - Discussion of results and quick wrap up



**The Guiding
Framework**

New European Bauhaus

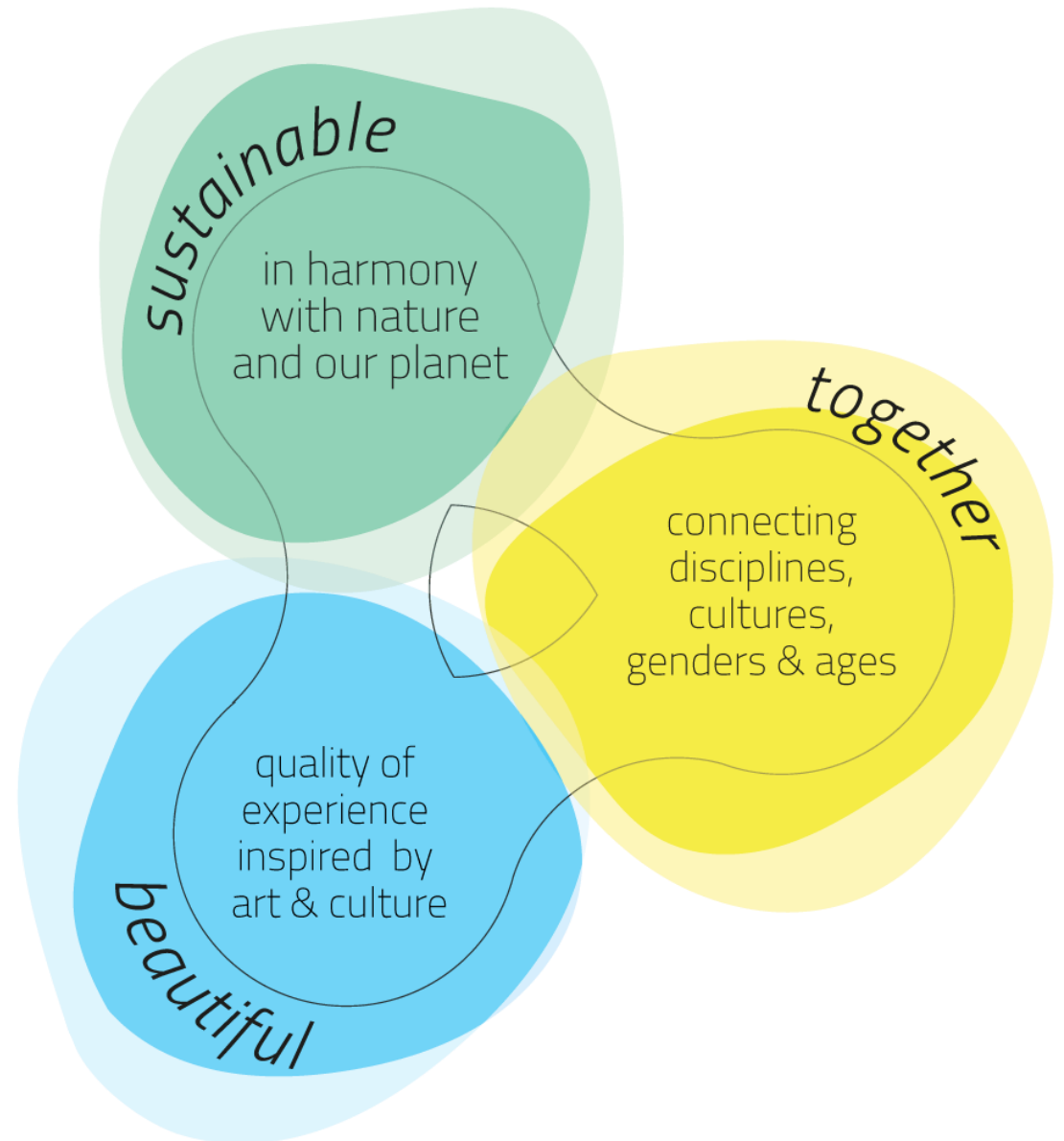
Standards for the built environment

Limerick, 12/11/2024

Lorenzo de Simone

JRC.B.4 – European Commission

Lorenzo.de-Simone@ec.europa.eu



New European Bauhaus: more than funding

- *Supporting NEB projects and their financing;*
- ***Working on the development, explanation and operationalization of NEB principles;***
- *Working with the NEB Community which can provide a rich network and facilitate knowledge exchange between members;*
- *Communicating through networks and platforms*

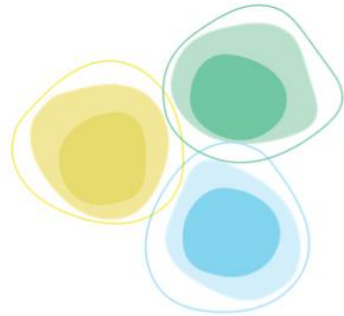


The NEB Compass



Together

- AMBITION I: to include
- AMBITION II: to consolidate
- AMBITION III: to transform



Sustainable

- AMBITION I: to repurpose
- AMBITION II: to close the loop
- AMBITION III: to regenerate

Beautiful

- AMBITION I: to activate
- AMBITION II: to connect
- AMBITION III: to integrate

Participatory Process

- AMBITION I: to consult
- AMBITION II: to co-develop
- AMBITION III: to self-govern



Transdisciplinary Approach

- AMBITION I: to be multidisciplinary
- AMBITION II: to be interdisciplinary
- AMBITION III: to be beyond-disciplinary

Multi-Level Engagement

- AMBITION I: to work horizontally
- AMBITION II: to work vertically
- AMBITION III: to work across levels



The NEB Compass

NEB Compass Values



Parkfarm © European Union, 2021

AMBITION I: to include

Equality • Accessibility • Prioritising disadvantaged people

An inclusive project grants accessibility (physical, cognitive, psychological, etc.) and affordability for all, regardless of gender, racial or ethnic origin, religion or belief, ability, age or sexual orientation. Equality of treatment and opportunities is essential but cannot be taken for granted, so it is important to prioritise less-represented individuals, groups and communities.

EXAMPLE: [Cristobal de Moura Green Street](#) (Spain) is a park project in Barcelona. The project includes affordable public housing and gives people with fewer economic resources the opportunity to enjoy living in a park environment too. It also includes kindergartens, social centres, a public gym, co-working, and other social, cultural and educational equipments for different groups to enjoy.

POSSIBLE GUIDING QUESTIONS

- Is the project easily and equally accessible? In which sense?
- Is the project affordable? How can a project become more affordable?
- Does the project consider the needs of less represented communities? Which ones? How?

AMBITION II: to consolidate

Overcoming segregation • Representation and social stability • Sharing resources and opportunities

An inclusive project fosters and equalises relations between users and/or communities, safeguarding the principle of equal treatment and social justice over time. Inclusion and open access to services are secured by formal, structural mechanisms such as funding instruments, business models, planning, policies, regulations and other institutionalisation processes.

EXAMPLE: The [Municipal School of Architecture](#) in Borlänge (Sweden) is a tool for democracy. At the school, children and young people learn about both the physical environment and the community-building process. After joining, the children become members of an expert group that helps planners build the municipality. This is a method to bring the child perspective into planning, but also to establish the right of every child to freely express their views, in all matters affecting them, as the built environment does.

POSSIBLE GUIDING QUESTIONS

- Does the project secure social justice over time? How?
- Does the project offer equal resources and opportunities? In which ways?
- Does the project help to overcome segregation between different communities? What kind of instruments can be put in place to reach this objective?

AMBITION III: to transform

Fostering shared social values • Societal development and collective growth • New ways of living together

Inclusion inspires new ways of living together, building on solidarity and cooperation, raising awareness of discrimination and injustice. An inclusive project becomes exemplary and replicable, and has the potential to break obsolete social models, create value and bring transformative benefits on a societal level, influencing worldviews, paradigms and social behaviours.

EXAMPLE: [Borgo Sostenibile Figing](#) (Italy) is one of the first social and collaborative housing projects in Italy. The experimentation, undertaken for its design and creation, helped to define the social housing sector in Milan, not only creating affordable housing districts, but also encouraging the development of collaborative and sustainable communities. The presence of shared spaces and services enables residents to organise and share everyday activities with their own neighbours, transforming them into key active players in enhancing their living conditions and context.



POSSIBLE GUIDING QUESTIONS

- Does the project promote new ways of living together? What kind of instruments can be put in place to reach this objective?
- Does the project have the ambition to break obsolete and unjust social models? How does it plan to do this?

NEB Compass
Working Principles

MadreProject

School of places and breadmaking
Italy (2021)


MadreProject | European Union, 2021



<p>Participatory process AMBITION III: to self-govern</p> <p>During a pilot week, MadreProject gathered participants in a co-creation process [9] to set the course for a school 'rooted in collective intelligence'. It proposes that each learner builds their own education path based on their needs and interests as a horizontal, self-led. MadreProject was also crowdfunding campaign for bottom-up project enablers. The project support of 360 donors has been full.</p>	<p>Multi-level engagement AMBITION II: to work locally</p> <p>MadreProject builds on a diverse coalition of actors (non-profit, startup accelerator) active at local, regional, and national level. It was selected by the city of Milan to take part in an innovative funding mechanism, while being</p>	<p>Transdisciplinary approach AMBITION III: to be beyond-disciplinary</p> <p>The project emerged through the joint efforts of L.1 a non-profit organisation specialised in regeneration through culture, a social impact startup accelerator, and a master breadmaker, cereal grower, co-founder of ISU (Institute for Urban Regeneration).</p>
--	---	---

NEB Compass
Examples

Flaux Flower Matter

Germany (2022)



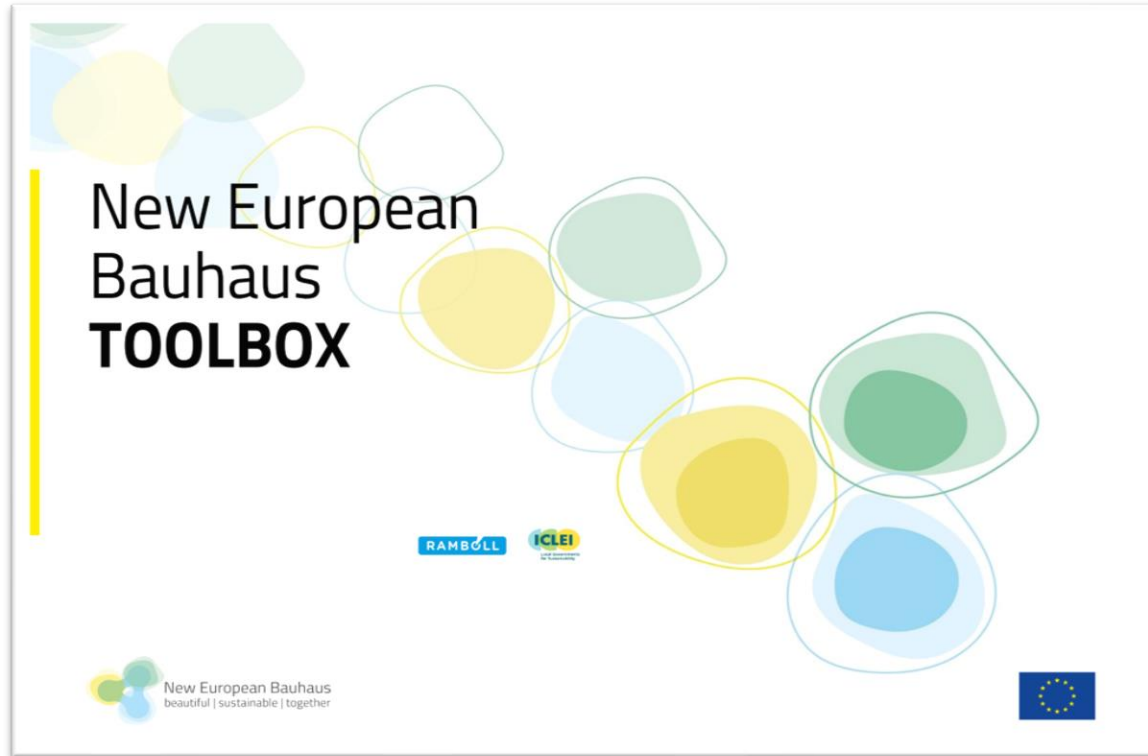



Project description

An innovative textile material made from flower waste provides a solution to cut waste connected with flowers. It does this by diverting flower waste from landfills into environmentally responsible materials, directing the recyclable waste that comes with flowers into their proper recycling processes, offering alternatives for unsustainable materials and enabling circularity in the industry.



The NEB Toolbox



The NEB Toolbox was developed in the framework of the *Support to the New European Bauhaus Local Initiatives*, which, in 2023, provided technical assistance to **20 small and medium-sized municipalities**.

It's a comprehensive resource that serves as a guide and support for the implementation of various projects thus complementing the NEB Compass.

It is divided into two parts, with the first part providing **methodological foundations** and the second part offering **insights into real processes on the ground**.

Primarily tailored for **public bodies**, including a wide range of formally established entities that deliver public services.



The NEB Investment Guidelines



1) Help investors, developers and project owners to **understand better what the NEB is** and how it concretely links to the different aspects and stages of investment and project development.

2) Provide **concrete recommendations** about design solutions, practices and processes that help shape high-quality projects in line with the NEB. The recommendations also illustrate their **benefits**, their **challenges**, and ways to mitigate them.

The Guidelines set the basis for how and why investments in built environment projects can be aligned with the New European Bauhaus. They provide guidance on how to put NEB values and principles in practice in the various aspects of investment and project preparation, and concrete recommendations.

The NEB Investment Guidelines are the outcome of close cooperation between the European Commission and JASPERS (Joint Assistance to Support Projects in European Regions), an advisory programme funded by the European Commission and the European Investment Bank.



The NEB Self- Assessment tool

The NEB Self-Assessment tool will have the objective to evaluate where a project stands in relation to the NEB dimensions.

It was developed in two distinctive but consistent parts:

For projects below 100K euro:

The NEB Small Projects Checklist

- ✓ Developed by the EIB
- ✓ Targeting non-professional users
- ✓ Works as a checklist



For projects above 100K euro:

The NEB Self-Assessment Method

- ✓ Developed by JRC.E3
- ✓ Targeting professional users
- ✓ Works with quantifiable criteria



The NEB Self- Assessment tool: a checklist

*“A checklist to support the (self-)assessment of the alignment with the NEB core values and working principles of small projects or project ideas in the built environment: **buildings and open spaces.**”*

The checklist can be used both as a self-assessment tool by **project promoters**, or as a **third-party assessment tool** by independent experts, authorities and other actors interested in assessing the “NEB alignment” of projects. Its format is suitable for non-technical users.

The checklist was **developed by the EIB**, in close collaboration with JRC.B4.

State of play:

- It is currently in revision, to better align with the Davos Baukultur Quality System and Level(s).
- Expected delivery of the updated version: December 2024.



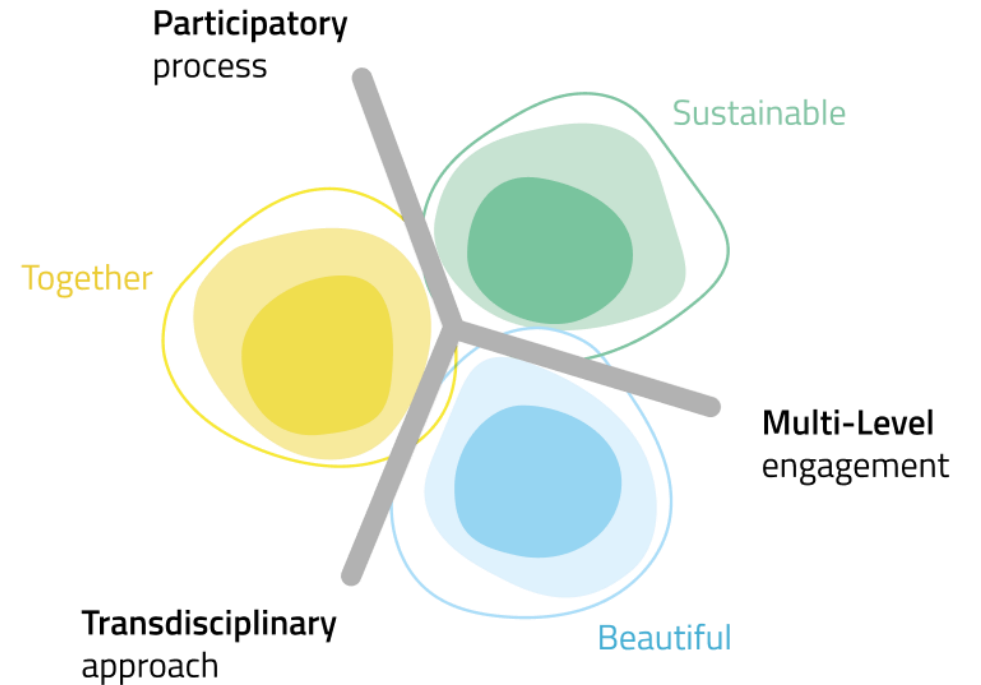
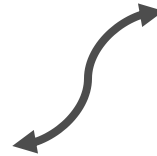
Format & Functions

- The checklist consists of **multiple-choice questions**.
- The questions are organised in **four sections** corresponding to three NEB core values (Beautiful, Sustainable, Together) and the NEB working principles. Each section addressing the core values is further subdivided in three subsections.
- Due to the extreme wide range of possible small NEB projects, the user is given the possibility to **skip questions**. The user is recommended to make the smallest possible use of this option.
- For “Micro projects” with total investment costs below EUR 20,000, the user can decide that the project has a **focus on one single Core Value**.
- It is recommended to run the assessment on distinct single projects on or composite projects consisting of linked and interrelated components. In case of packages bundling together independent projects, it is recommended to run the assessment independently for each of the project components.
- The user is asked to set some **filters** corresponding to specific project cases before carrying out the assessment.



Sections

- **Beautiful**
 - Integration to the built and natural environment
 - Quality of experience
 - Identity and purpose
- **Sustainable**
 - Circularity
 - Climate Change mitigation and adaptation
 - Other environmental aspects
- **Together**
 - Physical inclusion
 - Social inclusion
 - Creation of vibrant communities
- **Working principles**



Questions: Beautiful

Question	Weight	Type (Score)
1 Beautiful		
1.1 Integration to the built and natural environment		
1 <u>Distinctiveness of design:</u> Does the project include distinguishing design elements to reinforce awareness or increase the distinctiveness and recognition of the affected project and its immediate surroundings?	2	Fully/Partially/No (10/5/0)
2 <u>Promotion of the site's unique assets:</u> Does the project exploit and highlight the potential of the site's unique natural assets (such as proximity to water bodies or mountains, landscape views or topography) or the unique characteristics of the settlement where it is located, in terms of history, culture, or architecture?	2	Fully/Partially/No (10/5/0)
3 <u>Comprehensive analysis of context:</u> Is the project design based on a comprehensive analysis of its context, aiming at understanding the local social, economic, cultural values, the place's physical characteristics, its unique challenges and potential?	2	Fully/Partially/No (10/5/0)
4 <u>Integration to built environment:</u> If the project is in an urban context, does it apply at least two of the following techniques? <ul style="list-style-type: none"> • Filling-in an urban or any void in an empty or derelict lot. • Building height adjusting to its immediate neighbouring structures at public space front. • Façade colour, openings or texture referring to existing material, colour, texture etc. in the street or urban block or neighbourhood. • Decorative, shading, protective or any other structure(s) referring to similar existing elements in the street or urban block or neighbourhood. If not, does the project adopt any other urban/architectural integration approach or does it intentionally contrast its surrounding urban environment by adopting justified approaches of architectural composition?	1	NA/Yes/No (10/0)
5 <u>Integration to natural landscape:</u> If the project is surrounded by natural landscape, does it apply at least two of the following techniques? <ul style="list-style-type: none"> • Materials, colours or textures referring to existing ones in the landscape. • In case of building or other structure, creation of subterranean/underground spaces or a major part of the building forming a new ground. • In case of building or other structure, building height adjusting to its immediate natural or surrounding landscape. • If the project includes vegetation, incorporation of locally grown and native trees, shrubs, and perennials. If not, does the project adopt any other architectural/landscape integration approach or does the project intentionally contrast to its surrounding natural environment by adopting justified approaches of landscape or architectural composition?	1	NA/Yes/No (10/0)
6 <u>Protection of cultural heritage:</u> If the project includes or otherwise targets listed buildings, spaces or any other elements of recognised historical and/or cultural value, does the	1	NA/Yes/No (10/0)

Questions: Sustainable

2 Sustainable		
2.1 Circularity		
27	<p>Exploit the potential of neglected assets: Does the project explore and exploit the hidden potential and aesthetic value of existing assets that are generally not considered to be useful or attractive?</p>	2 Yes/No (10/0)
28	<p>Fostering circular behaviour: Does the project contribute explicitly to fostering circular behaviour in the community or in the households (for example, by allowing access of public to compost areas for educational purposes, by fostering a local construction material bank, introducing repair cafés, by introducing communal urban allotment gardens etc.)?</p>	2 No->0 The project integrates elements that foster circular behaviour->5 The whole concept of the project fosters circular behaviour->10
29	<p>Aesthetics for circularity: Does the project encourage the adoption of new aesthetic norms that promote circularity, by valuing the aesthetic quality of modular, re-used, "imperfect" or "raw" structures and finishes?</p>	1 Fully/Partially/No (10/5/0)
30	<p>Reuse of spaces, structural elements, materials and equipment: How many of the following strategies apply to the project?</p> <ul style="list-style-type: none"> • The project includes the reuse, refurbishment or repurposing of an existing building or open space (at least 50% of the total property surface area is refurbished, reused or repurposed) OR of other structures of recognised value (e.g., an abandoned open theatre, disused containers, parts of industrial archaeology, etc.). • The project incorporates already used structural elements or equipment in a way which is well recognisable and showcases the concept of circularity. • The project incorporates used or reusable materials (including aggregates), either in a significant amount (≥20% by weight) or, if in smaller amounts, in a recognisable way that showcases the concept of circularity. 	2 NA/Two or more/One/None (10/5/0)
31	<p>Shared use: Does the project involve the shared use of services, assets, spaces and resources (for example by introducing bike-sharing, co-working spaces, shared community gardens or other shared spaces in residential projects, energy sharing etc.)?</p>	1 NA No ->0 The project involves shared use of some services, assets, spaces and resources ->5 The whole concept of the project is based on shared use of services, assets, spaces and resources ->10
32	<p>Adaptable design and design for disassembly:</p>	1 NA/Two or more/One/None

Questions: Together

3 Together		
3.1 Physical inclusion		
56	<p>Assurance of inclusive design: Does the project design enable the unrestricted movement of people with diverse needs without compromise to their experience within the building or open space, ensuring comfortable movement at the project's entrance, horizontal and vertical circulation, and access to all main spaces of the project? Or can the project be enjoyed or used or operated by all users, regardless of their abilities or background (including furnishings, fixtures and fittings)?</p>	2 Yes/No (10/0)
57	<p>Addressing the particular needs of vulnerable individuals: Does the project concept and design explicitly address the particular needs of vulnerable users, such as older people, children, women, immigrants or people with disabilities? For example, by creating safe and walkable environments and integrating playful interventions for children or ensuring autonomy and facilitating social interaction for older people.</p>	2 Yes, for two or more social groups. Yes, for one social group. No (10/5/0)
58	<p>Innovative inclusive design: Does the project go beyond the locally applicable accessibility laws or codes in accommodating a diverse range of disabilities and needs by introducing innovative, unconventional, and particularly inclusive measures? For example:</p> <ul style="list-style-type: none"> • Introduction of flexible spatial layouts or convertible equipment that enable changes in access requirements. • Use of colour, textures, images and other multi-sensory, visually perceptible information for people who are neurodiverse. • Use of wayfinding strategies that help individuals intuitively navigate through the project (e.g., signage, tactile maps, symbols, auditory cues, information systems, images, colours that considers colour blindness, various languages). • Use of technology (e.g., audio and visual equipment and interfaces, web access, etc.) that helps individuals fully utilize a space (e.g., remote access to assist blind or deaf individuals, support for those who do not speak the native language) or any other physical or non-physical system, made available to all users at no cost. 	1 Fully/Partially/No (10/5/0)
59	<p>Reduction of spatial segregation: Does the project aim at overcoming spatial segregation and closing spatial gaps, for example by regenerating abandoned areas or by introducing to them new uses and functionalities (e.g., by activating an unused urban open space through the introduction of sports facilities or temporary structures for street markets)?</p>	2 NA/Yes/No (10/0)
60	<p>Physical connectivity: Does the project improve or create new barrier-free access (possibly including also cycling and other soft modes) to buildings or open spaces that were previously not easily accessible or non-accessible at all, by providing for example access to inner courtyards of urban blocks or by introducing pathways and other elements of physical continuity?</p>	1 NA/Yes/No (10/0)

Questions: Working principles

Working Principles			
77	<p>Participatory process in project identification: Have those affected by the project been actively involved in the identification of the project, or has there been at least a consultation, providing them with adequate information on the project and with the opportunity to express ideas or objections?</p>	2	No -> 0 Consultation (passive involvement) -> 5 Active involvement -> 10
78	<p>Participatory process in project design and programming: Have the local community and the potential future users been involved and engaged in the development of the project strategy, <u>design</u> or programming of activities? Have systematic exchanges among members of the community and between the community and the project promoters taken place, for example by inviting them to express ideas or objections and formulate recommendations for the design of the project?</p>	2	No -> 0 <u>pt</u> Consultation (passive involvement) -> 5 Active involvement -> 10
79	<p>Participatory process in project implementation: Is there intention to involve and engage the local community or the future users in the implementation of the project, for example by encouraging voluntary participation in the construction, possibly also with educative and social purposes?</p>	1	NA/Fully/Partially/No (10/5/0)
80	<p>Participatory process in project operation: Is there intention to involve and engage the local community or the future users in the operational phase of the project, for example by encouraging self-governance in the form of collective decision making in the programming of services and activities (as applicable), collective delivery of services or collective physical maintenance?</p>	1	NA/Fully/Partially/No (10/5/0)
81	<p>Participation of disadvantaged people: Have disadvantaged people (e.g., homeless, ethnic minorities, migrants, people with disabilities, isolated older individuals) been demonstrably and actively involved in the project preparation, implementation, or operation?</p>	2	NA/Yes/No (10/0)
82	<p>Replicability potential: Can the project as a whole or partially in some of its characteristics (methodology, design, technology, processes, use, etc.) act as a role model and be easily replicated or transferred to other places, groups of beneficiaries and contexts?</p>	1	No -> 0 In some characteristics -> 5 Fully or to a predominant extent -> 10
83	<p>Multi-level engagement: Does the project demonstrably connect and integrate:</p> <ul style="list-style-type: none"> • Vertically, informal networks (e.g., local community groups) with formal institutions (e.g., academic institutions, cultural institutions, political groups); or • Horizontally, informal networks and formal institutions across communities, <u>sectors</u> or regions? 	2	Yes/No (10/0)
84	<p>Transdisciplinary approach: Does the design and/or construction of the project demonstrably involve the non-conventional collaboration of experts from two or more different disciplines (e.g., architects with biologists, engineers with artists, researchers with technicians, etc.), leading to innovative solutions that would have not been achieved without such collaboration?</p>	2	No -> 0 Two disciplines -> 5 More than two disciplines -> 10
85	<p>Creation, retention and dissemination of formal knowledge: Does the project contribute to the creation, retention and dissemination of knowledge and <u>best-practice</u>, for example by technical constructive</p>	1	No -> 0 One reference -> 5

Scoring

- Each answer is given a predefined number of **points (0/10 or 0/5/10)** depending on the type of question).
- The most significant questions have a weight factor “2”. All other questions have a weight factor “1”.
- Questions declared by the user as “**Non applicable**” (**NA**) to the project are excluded from the scoring and from the weighting.
- In order to compute the **overall score**, **all Checklist sections participate equally** with a weight 25%.
- The overall **alignment** with the NEB is given when a **pre-determined minimum threshold** is exceeded for each section and for the overall checklist. That is, if the project fails to pass the minimum Thresholds in one Core Value), the project is declared as Not NEB-aligned, independently how it performs in the other sections.

Summary of thresholds - Normal case			
Core Values and Working Principles			
0% to 20%			Fail
	20% to 50%		Good
		50% to 70%	Very good
			70% to 100%
			Exceptional
Weighted overall score			
If Fail on <u>any</u> Core Value or Working Principles			NOT NEB-aligned
0% to 30%			NOT NEB-aligned
	30% to 50%		NEB-aligned
		50% to 70%	Very NEB-aligned
			70% to 100%
			Exceptionally NEB-aligned

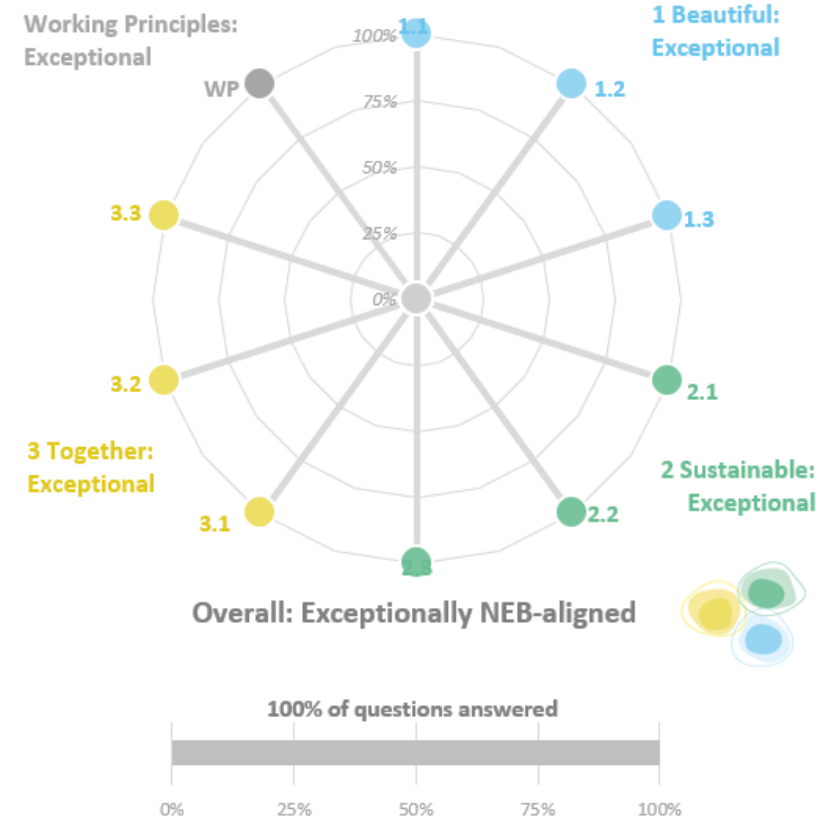


Scoring



Project "<Project Name>"

1 Beautiful	<i>(Weigth: 31%)</i>	100%	<i>Exceptional</i>
1.1 Integration to the built and natural en'		100%	
1.2. Quality of experience		100%	
1.3. Identity and purpose		100%	
2 Sustainable	<i>(Weigth: 30%)</i>	100%	<i>Exceptional</i>
2.1 Circularity		100%	
2.2 Climate Change mitigation and adapt:		100%	
2.3 Other environmental aspects		100%	
3 Together	<i>(Weigth: 22%)</i>	100%	<i>Exceptional</i>
3.1 Physical inclusion		100%	
3.2 Social inclusion		100%	
3.3 Creation of vibrant communities		100%	
Working Principles	<i>(Weigth: 16%)</i>	100%	<i>Exceptional</i>
Overall		100%	<i>Exceptionally NEB-aligned (90 questions answered)</i>



The NEB Self- Assessment tool: a methodology

Sustainability

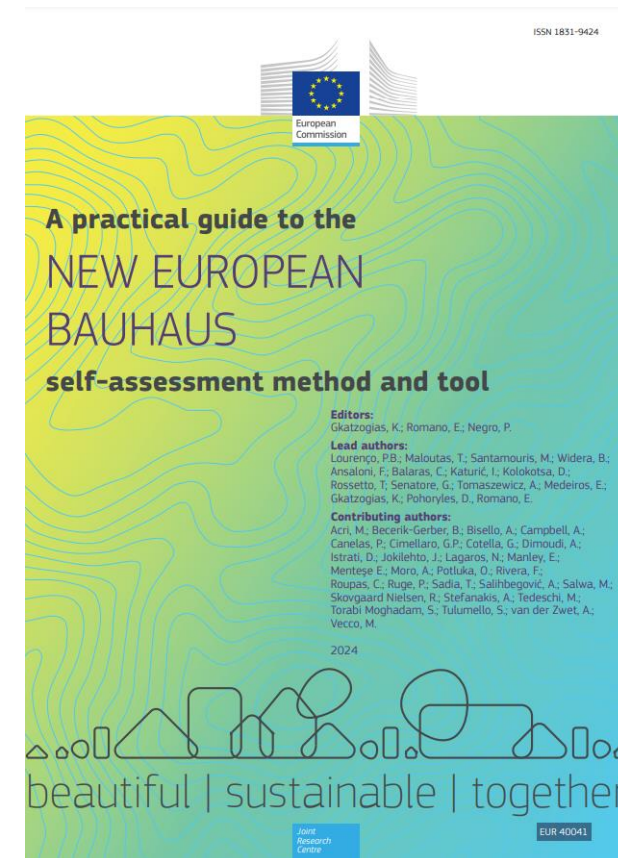
- Minimize the use of fossil fuels in the built environment
- Maximize the use of sustainable energy
- Minimize the greenhouse gas emissions
- Enhance sustainable mobility
- Minimize non-energy related environmental impacts to air and water
- Minimize non-energy related environmental impacts from the built environment
- Achieve the best possible greening of the public sector
- Achieve the best possible greening of the private sector
- Promote circular economy

Beauty

- Digitalization in construction
- Quality of design and delivery
- Ensuring occupant health, comfort and wellbeing
- Improving accessibility for everyone
- Maximizing durability and service life
- Ensuring high level of aesthetic acceptance of buildings and spaces
- Providing special coherence in planning and design
- Improving preservation of cultural and natural heritage
- Maintaining genius loci and improving sense of belonging
- Understanding aesthetic perception of buildings and spaces

Inclusiveness

- Funding and land value
- Affordability
- Inclusive quality, equality and accessibility
- Rent regulation
- Impact on neighborhood social cohesion
- Needs and resources for social accessibility
- Needs of vulnerable and marginalized groups
- Anti-discrimination initiatives
- Involvement of stakeholders





Thank you!

**Building the future: Integrating NEB
values and principles in Heritage
Regeneration under THRIVE
An EUI capacity building event in Ireland
12-13 November 2024, Limerick
Ireland**

Room Allocation

Group 1: Harris
Suite/City View
Suite

Stay here in Room 1

(stay with Eileen)

Group 2:
Henihan Suite

Move to:

Room 2

(follow Matthew)

Group 3:
O'Brien Suite

Move to:

Room 3

(follow Liat)

Group 4:
Wogan Suite

Move to:

Room 4

(follow Ed)



**Hands-on
exercise**

Site visits

Group 1

Leave Hotel at:
16.15
(follow Eileen)

Group 2

Leave Hotel at:
16.25
(follow Eleonora)

Group 3

Leave Hotel at:
16.35
(follow Eleni)