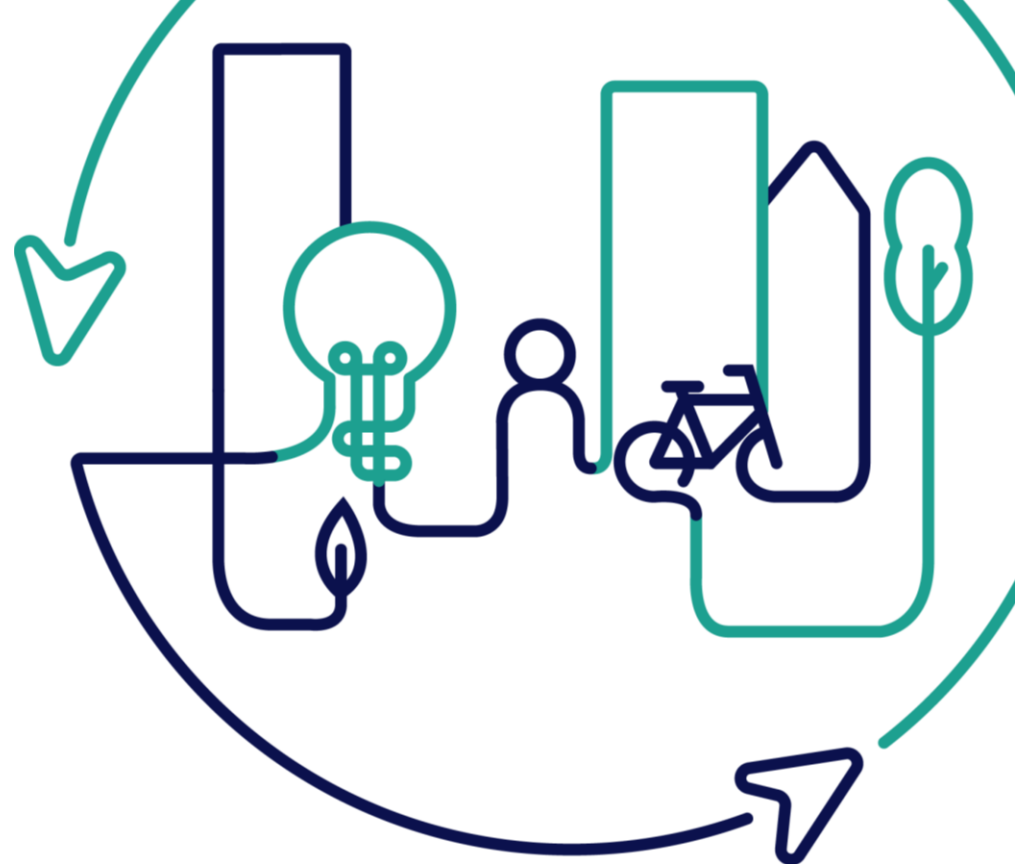


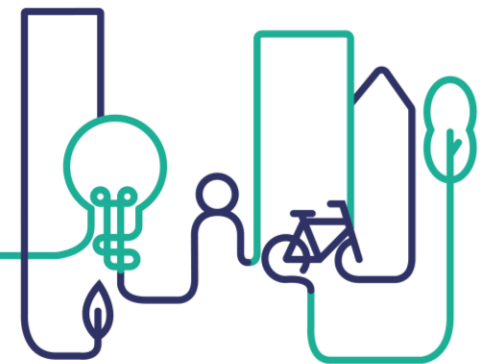
# EUROPEAN U R B A N INITIATIVE



Co-funded by  
the European Union

# DESIGNING FOR IMPACT: ALIGNING PROJECTS WITH THE NEB VISION

Practical guidance on transforming urban spaces to reflect NEB's focus on sustainability, beauty, and inclusion.



Co-funded by  
the European Union



# Session Plan

**14:15**

**Introduction**

**14:20**

**Presentation by Sarah Miller**

**14:40**

**Group Activity**

**15:25**

**Feedback**

**15:40**

**Wrap-up & Close**



# Session Aims

1

To showcase the 'what' of NEB. What are the values and principles of NEB and how can a project integrate and align these?

2

To share the experience of the Rediscovery Centre in renovating a space, aligning with NEB values and principles.

3

To share and try out a NEB checklist tool aimed at supporting the alignment of projects with NEB values & principles.

4

To promote participant discussion and exchange on NEB challenges & opportunities.



**Let's hear  
from Sarah,  
Rediscovery  
Centre**



# Sarah Miller Rediscovery Centre

12 November 2024

---

Who we are

# Rediscovery Centre

The National Centre for the  
Circular Economy





## Our Mission

To lead Ireland's transition to a circular economy and sustainable future



## Our Vision

A society that is fair, inclusive and thrives within natural resource limits



---

# Strategic Goals



## Goal 1 Educate

Advancing Lifelong  
Learning



## Goal 3 Collaborate

Deepening the  
Movement



## Goal 2 Demonstrate

Enabling Action and Best  
Practice



## Goal 4 Advocate

Driving Evidence Based  
Policy

---

# Demonstration

- National centre for CE
- Social enterprise
  - Paint
  - Furniture
  - Fashion
  - Bicycles
- CE innovation
- National CE Academy



# Education

- Primary, Secondary & Third Level
- Vocational training
- Public Workshops
- CE Communications
- Multi-channel campaigns
- Knowledge & Information platforms
- CE Conversations & Events



# Collaboration

- Strategic partnerships
- Research programmes
- Communications
- Events
- CE transition networks



Rialtas na hÉireann  
Government of Ireland



Dublin City Council  
Comhairle Cathrach Bhaile Átha Cliath



# Advocacy

- Policy reviews and analysis
- CE communications & debate
- Technical committees, advisory boards & associations
- Networks & advocacy groups



---

# Working with industrial spaces to exemplify reuse



WISER



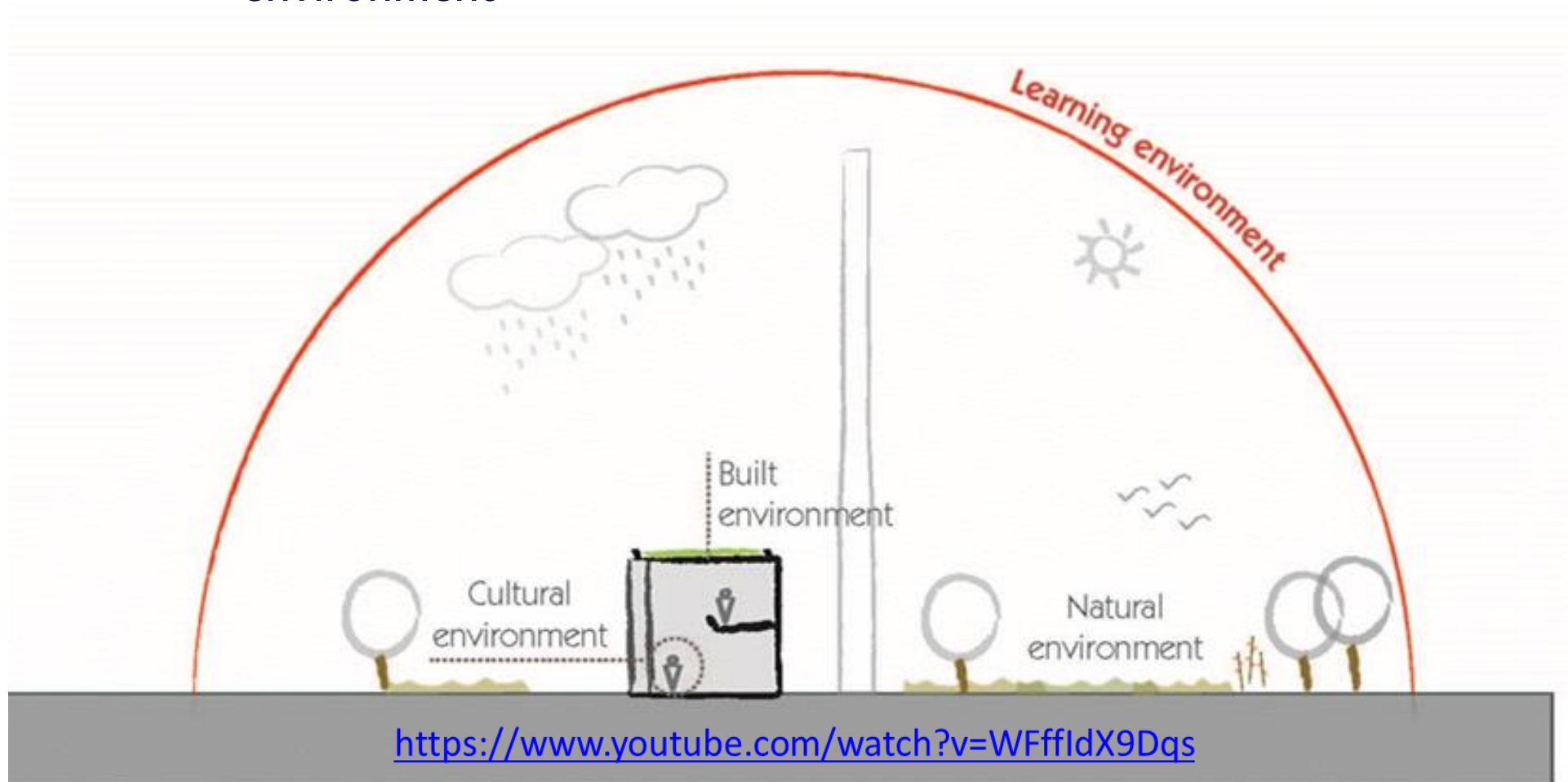
# WISER LIFE - Project Goals

- Create a novel educational space and innovative experience to demonstrate excellence in the Circular Economy
- Challenge conventional thinking about how we live, stimulate positive behavioural change and highlight how we can use our resources wisely to achieve a low carbon, sustainable society.



# Objective

Highlight the opportunity for enhanced education and positive behaviour change presented by interactions with the built, cultural and natural environment





# Deconstruction V's Demolition

## Industrial building reuse





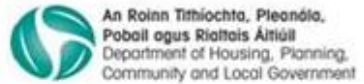
Coordinating Beneficiary

Co-Beneficiary



European Commission

Co-Financiers



**WISER** WORKING WITH INDUSTRIAL SPACES TO EXEMPLIFY REUSE

# Sustainable design & build

## Maximizing reuse and future flexibility



Steel Structures

Original  
concrete floor

### Material Selection

- Reuse direct
- Reuse local
- Sustainable, natural or of waste origin

# Nature based solutions

solar PV



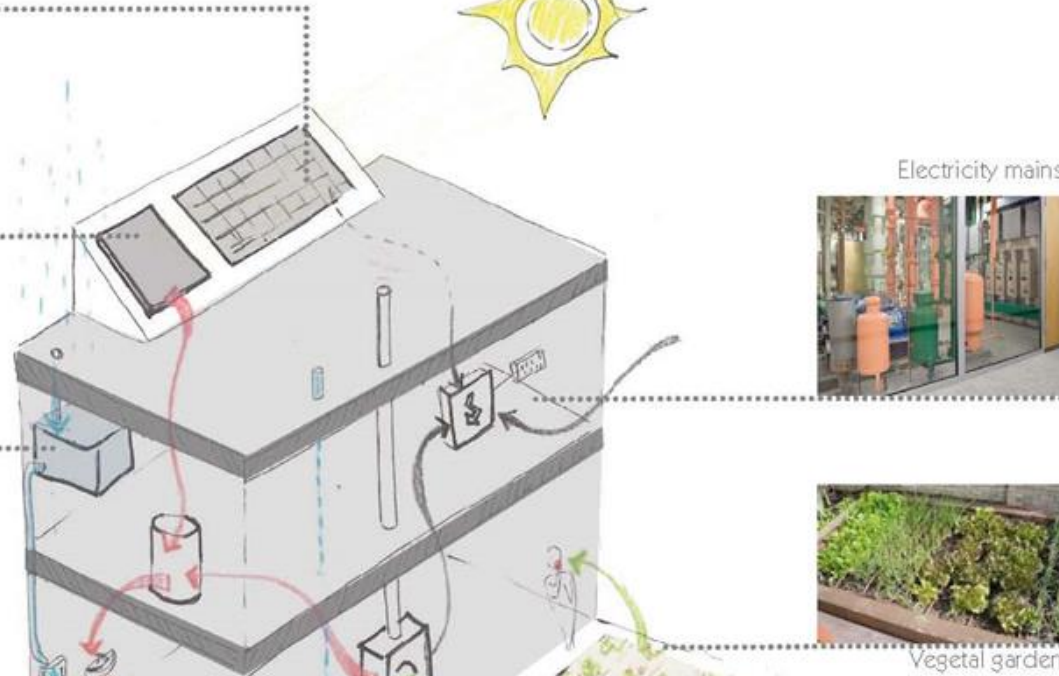
solar Thermal



Water mains



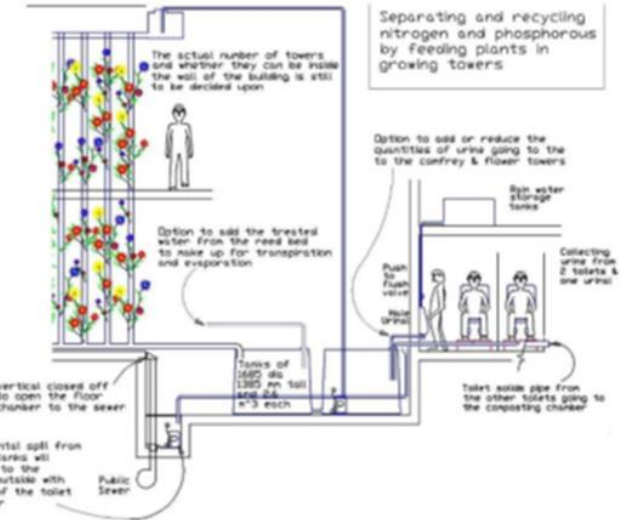
CHP plant



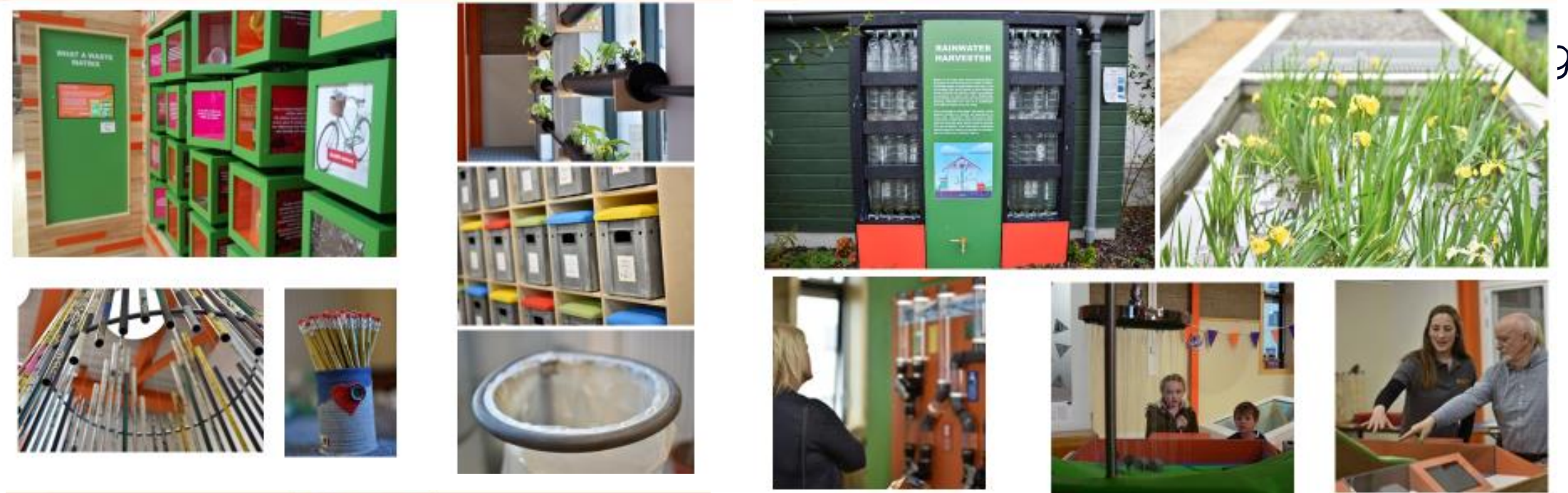
Electricity mains



Vegetal garden



# Interaction & Engagement



30+ bookmarks.  
Built, natural &  
cultural focus points

## ECOCLUSTER CO-CREATION

STEAMPUNK LOOKING  
MIRROR



### MATERIALS

NEW

RENEWED  
Wood  
Old  
Plum

### BACKGROUND

The mirror frame was made from scrap wood pallets. The wood was planed and treated with gesso. The plumbing fixtures and fittings were sourced from the old ballymun boiler house.

**WISER** WORKING WITH INDUSTRIAL SPACES TO EXEMPLIFY REUSE

## ECOCLUSTER CO-CREATION

COFFEE TABLES



RENEWED  
Wood pallets  
Old cafe tables

Tables were donated by Irish Rail. The wood was planed together. It was then white washed with a brush/blowtorch to present a distressed look to fit in with the interior of the

WORKING WITH INDUSTRIAL SPACES TO EXEMPLIFY REUSE **REDISCOVERY CENTRE**

## ECOCLUSTER CO-CREATION

BICYCLE BIN



### MATERIALS

NEW

RENEWED  
Bicycle wheel and inner tube  
Microphone stand  
Long chain  
Old Boiler house valve

### BACKGROUND

The base was created from the valve which has the chain coiled around it on top. The microphone stand stems from the middle which connects the base to the bin basket. The inner tube helps keep the bin bag from slipping out of the basket.

**WISER** WORKING WITH INDUSTRIAL SPACES TO EXEMPLIFY REUSE **REDISCOVERY CENTRE**



# Life Long Learning



- Guided tours
- Programmes
  - 18 x primary level
  - 7 x second level
  - 3 x University
  - 4 x CE training programmes
- 4 x practical skills



Q&A?





**Questions  
&  
Comments**



**Group  
Activity**

# NEB CHECKLIST

## HOW DOES IT WORK

- 1 value per table, if time allows reflect on the principle
- Discuss, exchange and answer the questions posed in the checklist, in so far as time allows (45 minutes)
- Assign 1 person to fill in the answers
- Assign 1 rapporteur to provide rapid feedback at the end (3 -4 minutes)
- Flipchart and guiding questions to guide the feedback



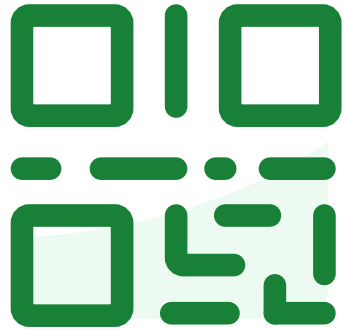
**Feedback**

# RAPPORTEUR GUIDING QUESTIONS

- Which value did you assess?
- Which were the main, overarching dimensions analysed in this specific value?
- How did the project respond to them?
- Which are the most striking features of the project in this specific value?

slido

Please download and install the  
Slido app on all computers you use



Join at [slido.com](https://slido.com)

**#ADD AND CHANGE QR!**

① Start presenting to display the joining instructions on this slide.

slido

Please download and install the Slido app on all computers you use



**Were the questions clear  
and understandable?**

① Start presenting to display the poll results on this slide.

slido

Please download and install the  
Slido app on all computers you use



**Were there any questions  
that you found particularly  
difficult to answer?**

① Start presenting to display the poll results on this slide.



slido

Please download and install the Slido app on all computers you use



**Do you feel that the questions seen today were able to break down the meaning of the NEB values & principles in practical terms?**

① Start presenting to display the poll results on this slide.

slido

Please download and install the Slido app on all computers you use



**Did using the checklist lead you to new insights or considerations about NEB that you hadn't thought about before?**

① Start presenting to display the poll results on this slide.

slido

Please download and install the Slido app on all computers you use



**How useful do you think the checklist will be for your daily practice or project evaluations?**

① Start presenting to display the poll results on this slide.

slido

Please download and install the Slido app on all computers you use



**Do you find the checklist  
adaptable to the specific context  
of projects in your town or city?**

① Start presenting to display the poll results on this slide.

slido

Please download and install the Slido app on all computers you use



**What improvements or additional features would you suggest?**

① Start presenting to display the poll results on this slide.



**What's next  
for you?**

**15:45**

**Coffee Break**

**16:15**

**Site Visits**

**18:00**

**Free Time**

**19:30**

**Dinner**

# Site visits

## Group 1

Leave Hotel at:  
**16.15**  
(follow Eileen)

## Group 2

Leave Hotel at:  
**16.25**  
(follow Eleonora)

## Group 3

Leave Hotel at:  
**16.35**  
(follow Eleni)

**Thank you**

