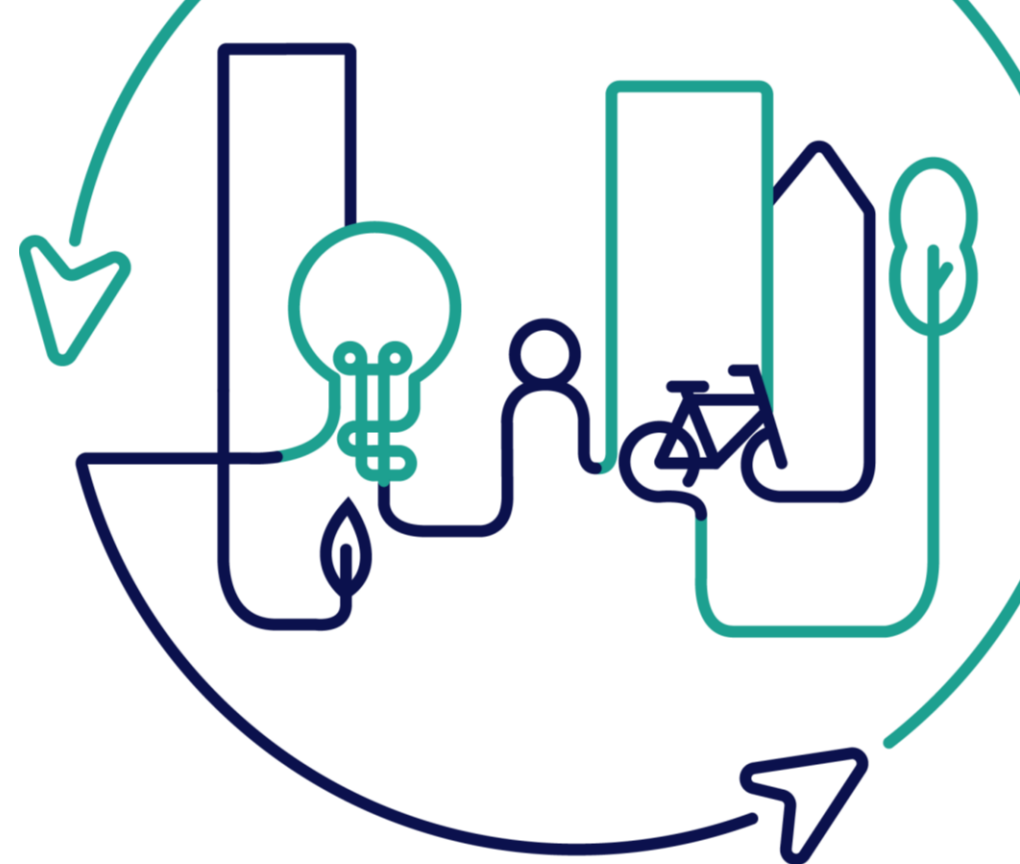


# EUROPEAN U R B A N INITIATIVE

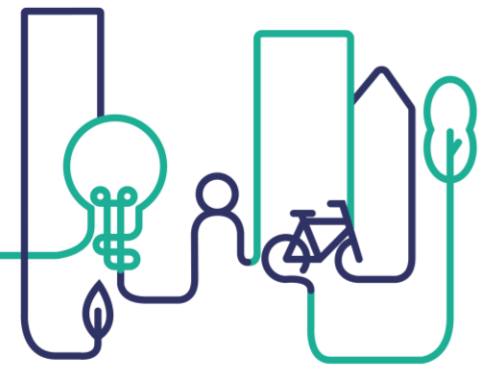


Co-funded by  
the European Union

# Workshop 8 - Tallinn Digital Twin

## Enhancing the accessibility and value of data to create useful tools for city planning

Markus Annilo, Digital Twin Technology Manager  
Stina Heikkilä, EUI Session Moderator



Co-funded by  
the European Union

# Start with slido

Join at **slido.com** with **#2760124**

Go to the “**polls**” tab



slido



**How familiar are you with the  
Digital Twin concept?**

① Start presenting to display the poll results on this slide.

slido



**What best describes your area of work?**

① Start presenting to display the poll results on this slide.

# AIMS OF THIS SESSION

- Understand the concept of Digital Twins through the experience of Tallinn
- To discuss and map the role of Digital Twins in fostering innovation ecosystems for sustainable urban development

# Digital twin and Tallinn

Markus Annilo



# What could be considered a digital twin?



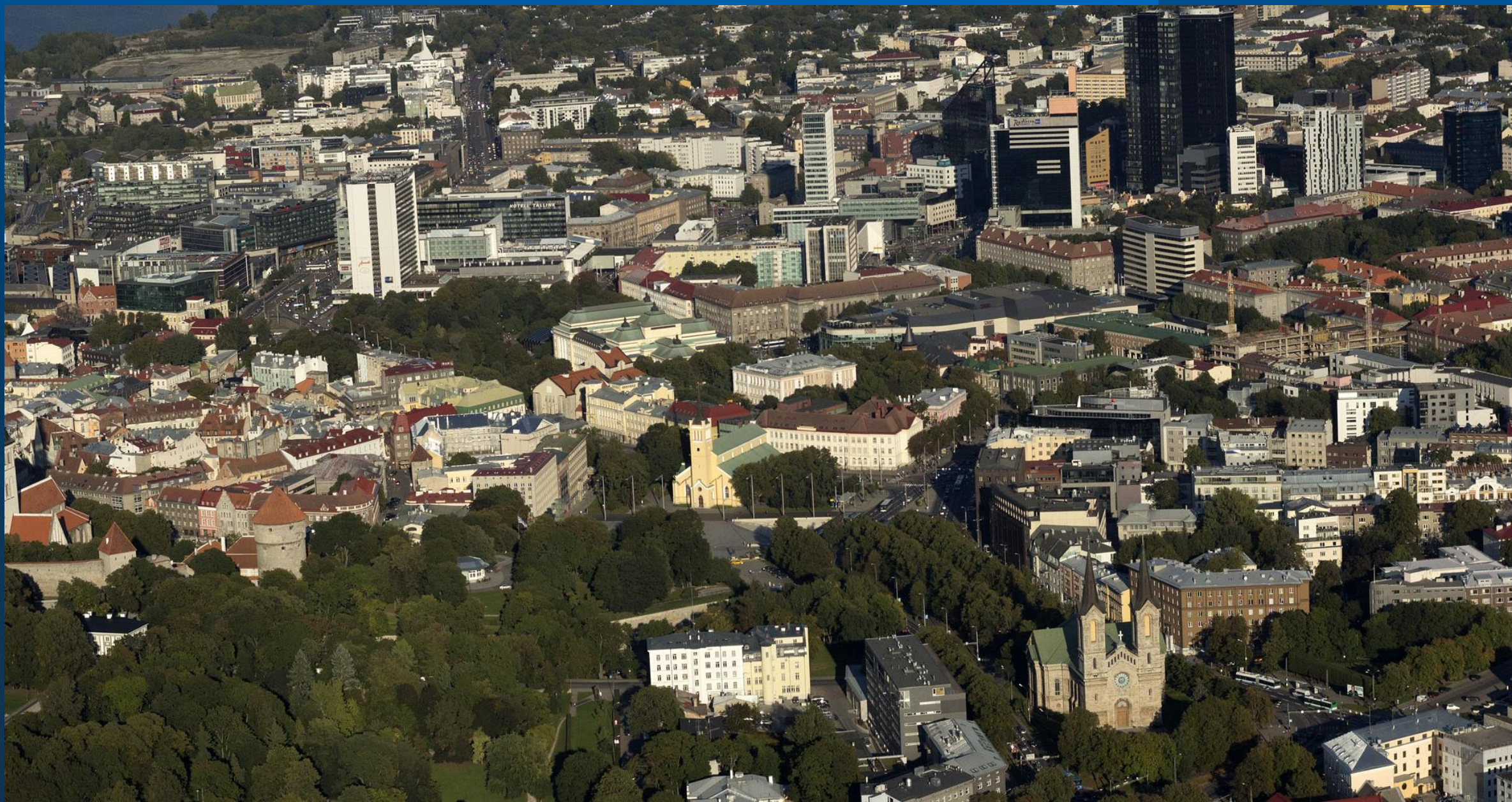


# Digital twin?

A virtual model of a real system that is in constant sync with its physical counterpart

**IEEE/ISO standard 26531:2015** "Standard Terms and Definitions for Intelligent Manufacturing Systems"

# What about Tallinn's digital twin?



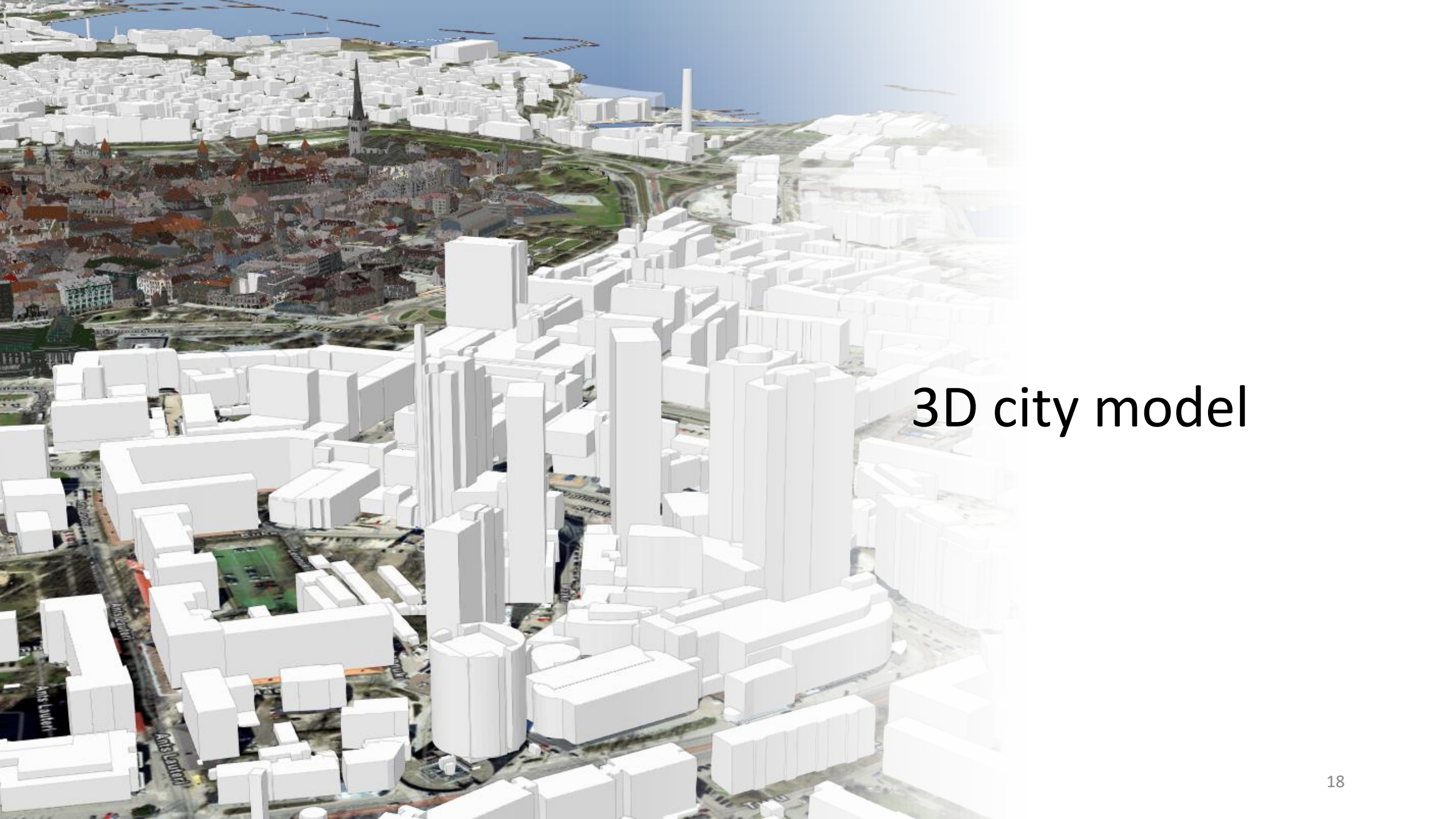




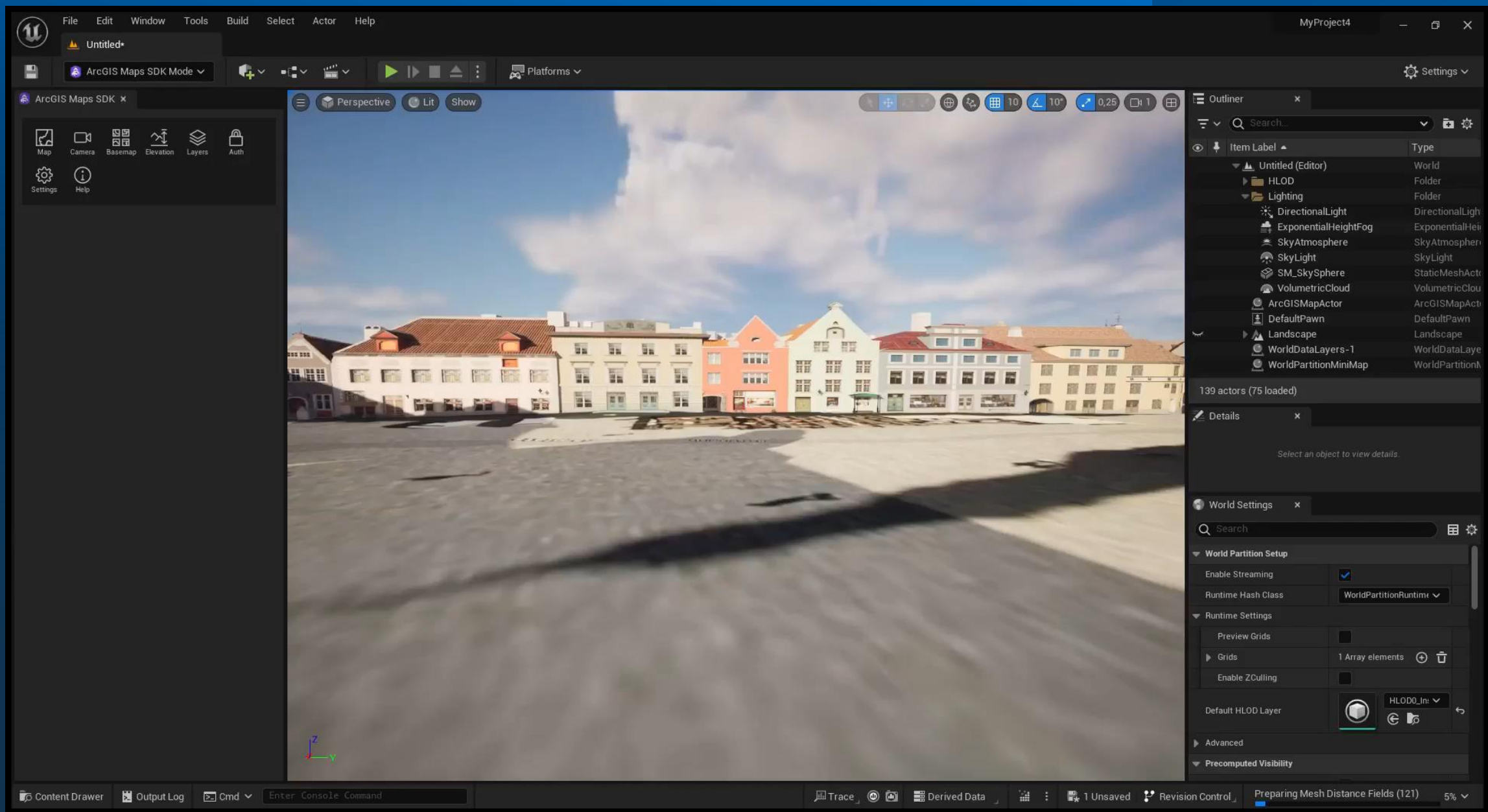


# How to build a platform?

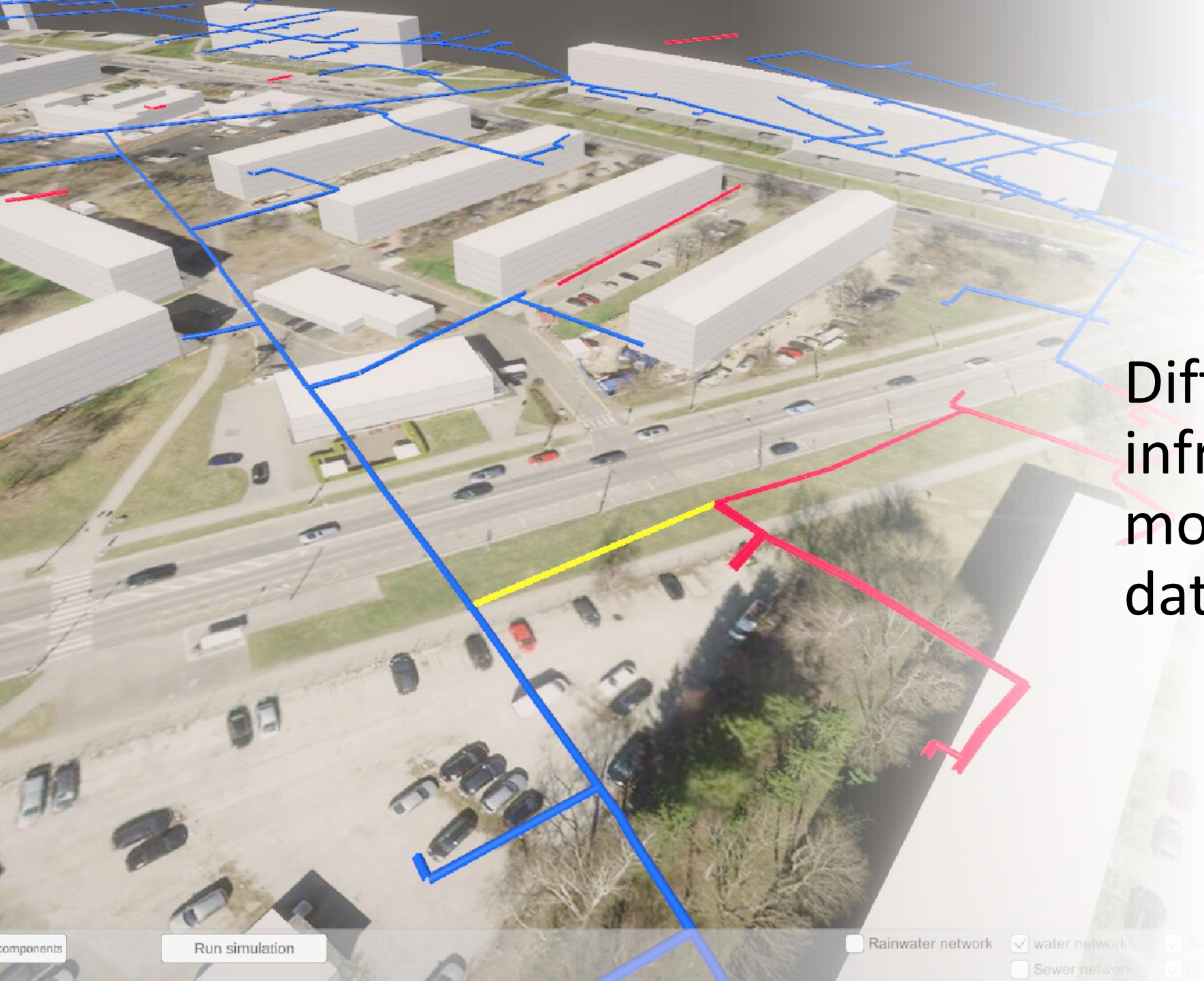
- Data management and collection
- Analysis and operation of technical systems
- Decision-making and development of Tallinn



3D city model



[3d.tallinn.ee](http://3d.tallinn.ee)



Different  
infrastructure  
models and  
databases

## PROPERTIES

All (12214)



All (12214)

Structure (3616)

Pipe (8597)

Polyline (1)

Design

Display

Extended Data



BIMcollab ZOOM (free version): Precinct\_VESI\_J2rve-Mustam2e

File View Navigate My view Validate Sectioning Extra Help

Navigation Smart views Clashes Lists Issues

Offline

- Precinct\_KANAL\_toru+kaev\_Järve-Mustamäe
- Precinct\_SADEKANAL\_toru+kaev\_Järve-Mustamäe
- Precinct\_VESI\_J2rve-Mustam2e

Distribution Chamber Element

Summary	Location	Clashes	3D Visualizati...	ArcGIS-Precin...
Property	Value			
dmeallika_id	63			
05_esituserand	0			
05_esitusreegel	Maapealne tuletõrjehüdrant			
tusaasta	0			
5_esituserand	0			
5_esitusreegel	Maapealne tuletõrjehüdrant			
ane_kõrgus	0			
ane_l2bim66t	0			
ane_tyyp	0			
evu_l2bim66t	300			
rgus	0			
rgusallika_id	6			
hja	konverter			
amis_kp	2018-01-02			
arkused	tüüp: Tallinn			
terjal	0			
utja	AS Tallinna Vesi			
utmis_kp	0-00-00			
jectid	2078800			
hanik	1			
g_id	0			
hja_kõrgus	0			
imikuallika_id	63			
me_id	0			
osusklass	0			
_id	0			
p_id	4			
alikk	30			

Summary

Location

Clashes

3D Visualization

☒ ArcGIS-Precinct\_vee andmed-tehnos6lm\_TallinnaVesiAS-Structures

General

Geometry

Misc

Miscellaneous

Part Data

Properties



# New technologies for data and their processing



## Digital twin for citizen

# What's next?

- First available services.
- Cooperation and open communication with different parties.
- Web portal for digital twin

# Thanks!



**Markus Annilo**

Digikaksiku tehnoloogiajuht

[Markus.annilo@tallinnlv.ee](mailto:Markus.annilo@tallinnlv.ee)

+372 56872315



# LINKING DIGITAL TWIN TECHNOLOGY TO INNOVATION ECOSYSTEMS & SUSTAINABLE URBAN DEVELOPMENT

➤ Some ideas...

## Governance

Efficient use of public funds (e.g. shortened planning processes)

Improved public engagement in city planning

## Environment & Climate

Improved traffic planning to minimise air pollution and CO2 emissions

Improved spatial planning to help nature protection

Improved Climate Change Adaptation and Disaster Risk Reduction and Prevention

## Social and cultural

Improved accessibility (e.g. access for people with disabilities, child-friendliness)

Simulation of planning concepts (e.g. 15 min city)

Cultural heritage conservation (e.g. post conflict)

## Economy

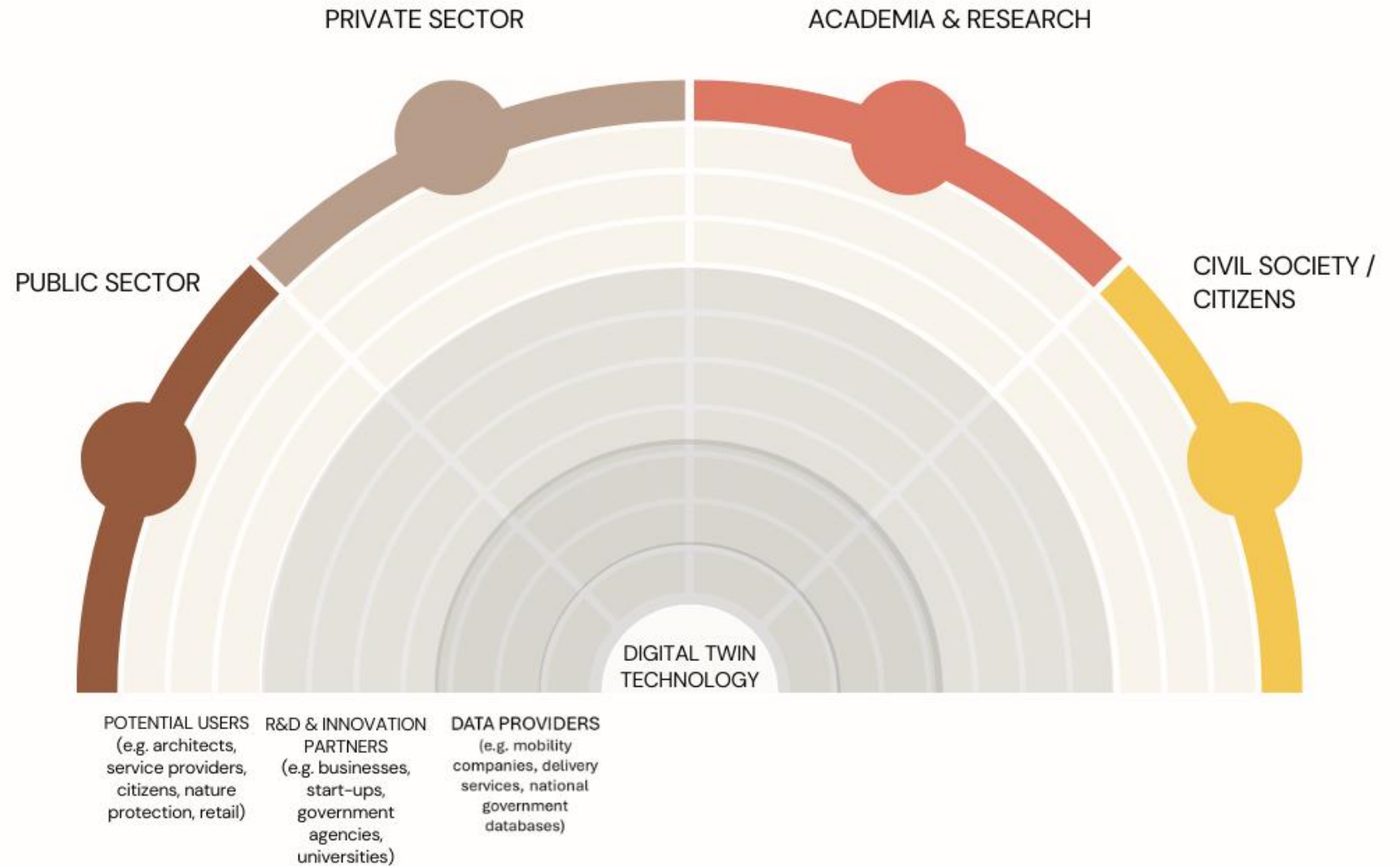
Business development support

Planning retail locations

Attracting international R&D

# LET'S MAP THE ECOSYSTEM

## INNOVATION ECOSYSTEM MAPPING



## ➤ HOW WE WILL WORK – 30 minutes

1

Gather in **groups of 4-5** around the canvases

2

**Introduce who you are** and your area of work and experience with Digital Twins and /or Innovation Ecosystems, as relevant

3

Discuss **one possible impact area at a time** and map who could be the different actors in the ecosystem around digital twin technology

4

**Share your insights** with the big group



# Start with slido

Join at **slido.com** with **#2760124**

Go to the “**polls**” tab



slido



**Where do you see the highest potential for impact towards sustainable urban development provided by Digital Twins technology?**

① Start presenting to display the poll results on this slide.

# What's next?

09:45

Interactive Workshops

10:15

Coffee break

11:30

Meet the cities and funders

12:30

Lunch

14:00

Making it all happen

15:30

What's next?

16:00

Closing together

**Thank you**

