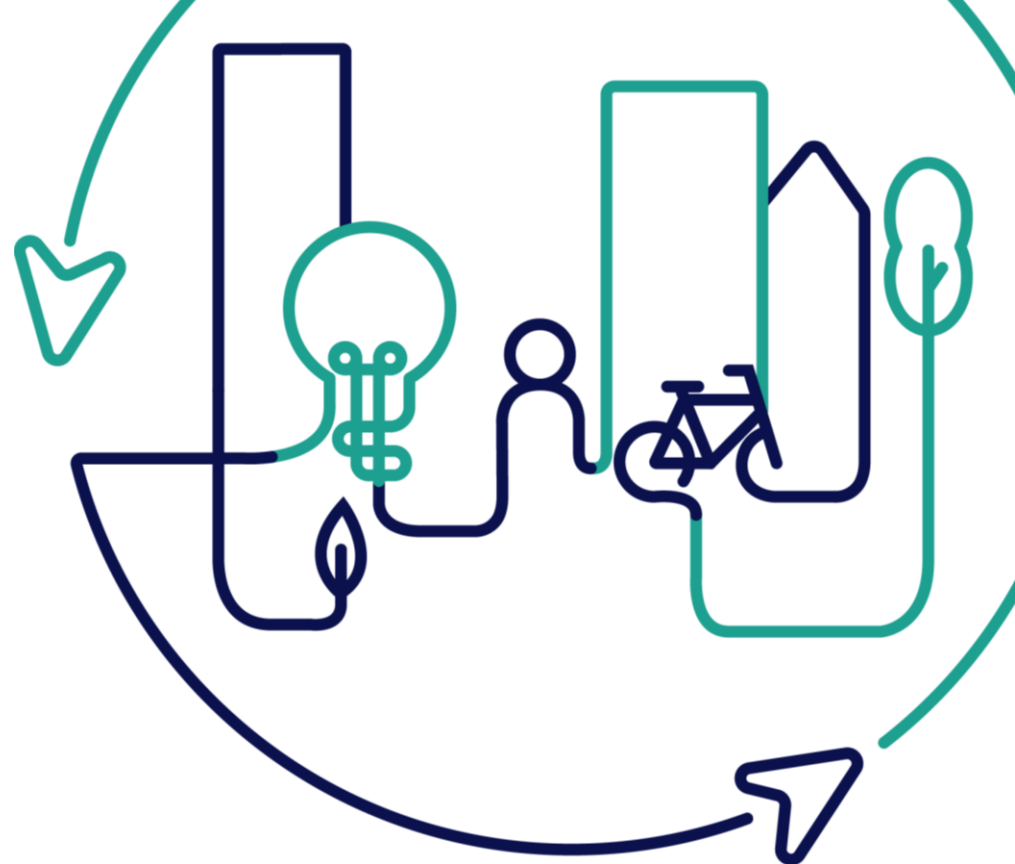


EUROPEAN U R B A N INITIATIVE



Co-funded by
the European Union

#EUIcall3





#EUIcall3

On a scale of 1 to 5, how familiar are you with the offer of the European Urban Initiative?



#EUIcall3

What kind of EUI support
are you seeking?



#EUIcall3

Which specific subject is most pressing for you today?



Agenda
14:00 – 15:30

- 1 Welcome words with the Région Hauts de France**
- 2 Key things you need to know about Call 3**
- 3 UIA City testimonial: experiences from City of Riba-roja de Túria (Spain)**
- 4 What are the next steps for applicants**
- 5 Wrap-up and closure words**

The background features abstract, stylized lines in teal and dark blue. In the top right, a teal line descends and then turns right to become a dark blue line. In the bottom left, a dark blue line descends and then turns right to become a teal line. In the bottom center, a teal line forms a U-shape. In the bottom right, a teal line descends and then turns right to become a dark blue line.

**Welcome words with
the Région Hauts de France**

The background features abstract, thick lines in teal and dark blue. In the top right, a teal line descends vertically, then turns right, then descends again, and finally turns right into a dark blue horizontal line. In the bottom left, a dark blue line descends vertically, then turns right into a teal horizontal line. In the bottom center, a teal line descends vertically, then turns right into a dark blue horizontal line. In the bottom right, a teal line descends vertically, then turns right into a dark blue horizontal line.

Key things you need to know about Call 3



Topics

EUI THIRD CALL FOR INNOVATIVE ACTIONS

2 topics

Energy transition

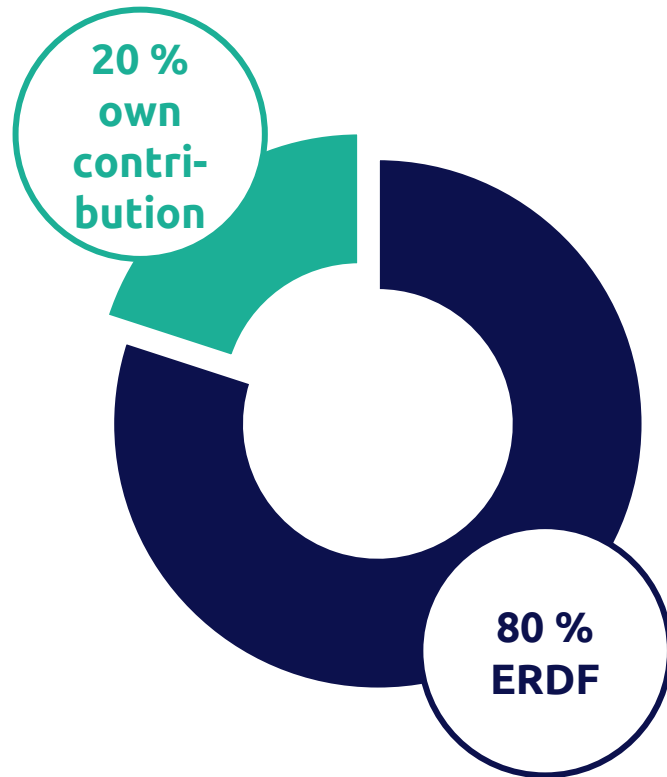
Technology in cities

EUROPEAN
URBAN
INITIATIVE

 Co-funded by
the European Union

Last „big” Call of EUI

Finances



Total budget: EUR 90 million ERDF

Max budget per project: EUR 5 million ERDF

Co-financing: 80% ERDF from EUI-IA

Advance payments & simplified costs options

Who can apply?

urban authorities

[single urban authority, an organised agglomeration or a grouping of urban authorities]

DEGURBA code 1 or 2

[check our Correspondence table]

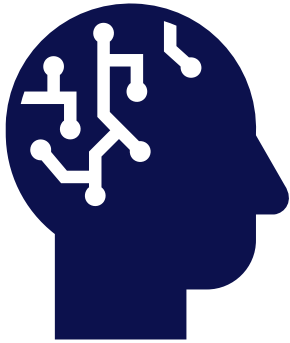
at least 50 000 inhabitants

[in case of grouping of urban authorities: total combined population (MUA and AUA(s))]

Urban Authority (MUA or AUAs) cannot be involved in more than one EUI-IA project and cannot be not previously funded under EUI



Innovative solutions



new, bold, creative and experimental

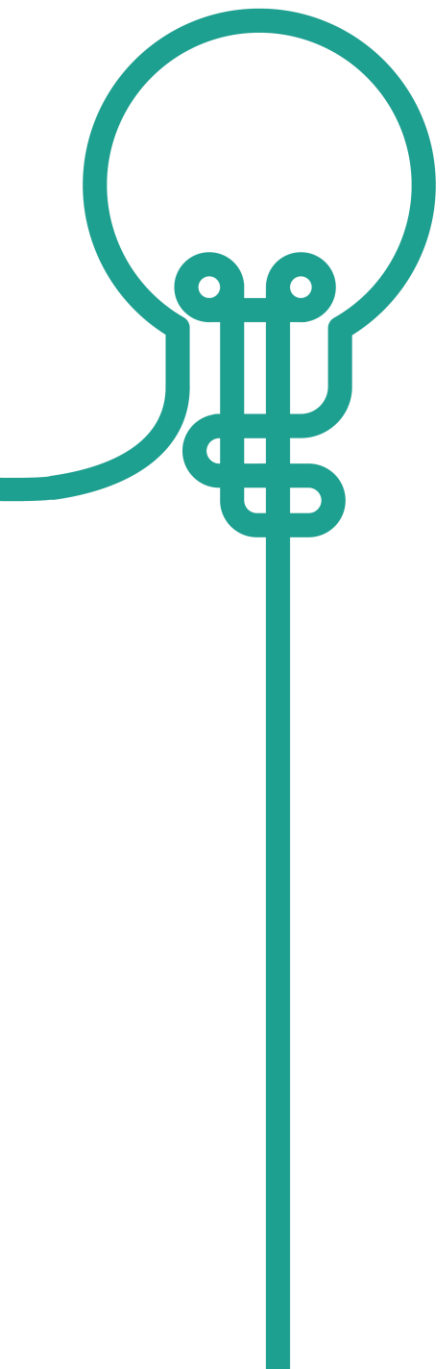
not previously implemented in EU → benchmarking!

products, services, processes evolving from existing practices (evolutionary approach) or completely new solutions (revolutionary approach)

city-led

relevant to achieve CP goals with a potential to inspire the use of mainstream programmes

linked to urban megatrends i.e. **green and digital transitions**



Key features



local experimentation

strong project partnership

test in a real urban setting

scalable and transferable

self-sufficient





Q&A

The background features abstract, thick lines in teal and dark blue. In the top right, a teal line descends vertically, then turns left horizontally, then descends vertically again, and finally turns left horizontally into a dark blue line. In the bottom left, a dark blue line descends vertically, then turns left horizontally, then descends vertically again, and finally turns left horizontally into a teal line. In the bottom center, a teal line descends vertically, then turns left horizontally, then descends vertically again, and finally turns left horizontally into a dark blue line. In the bottom right, a teal line descends vertically, then turns left horizontally, then descends vertically again, and finally turns left horizontally into a dark blue line.

UIA city testimonial

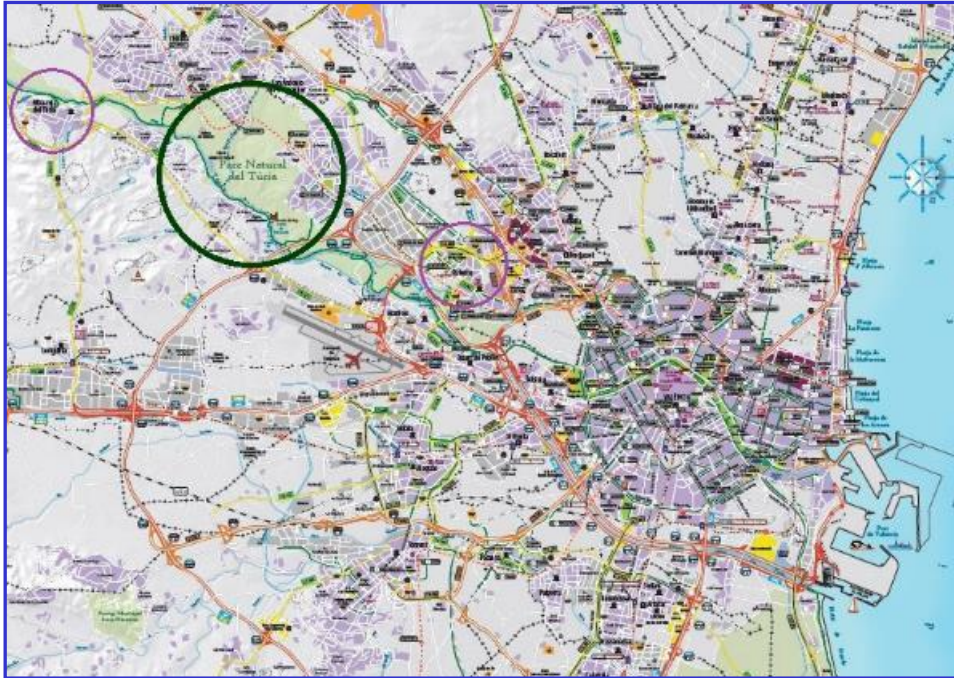
Vicente Adobes Golfe



Manager of public services for the municipality

Riba-roja de Túria
(Valencia–Spain)

UIA03-GUARDIAN – Reuse of water for fire defense in the interface area

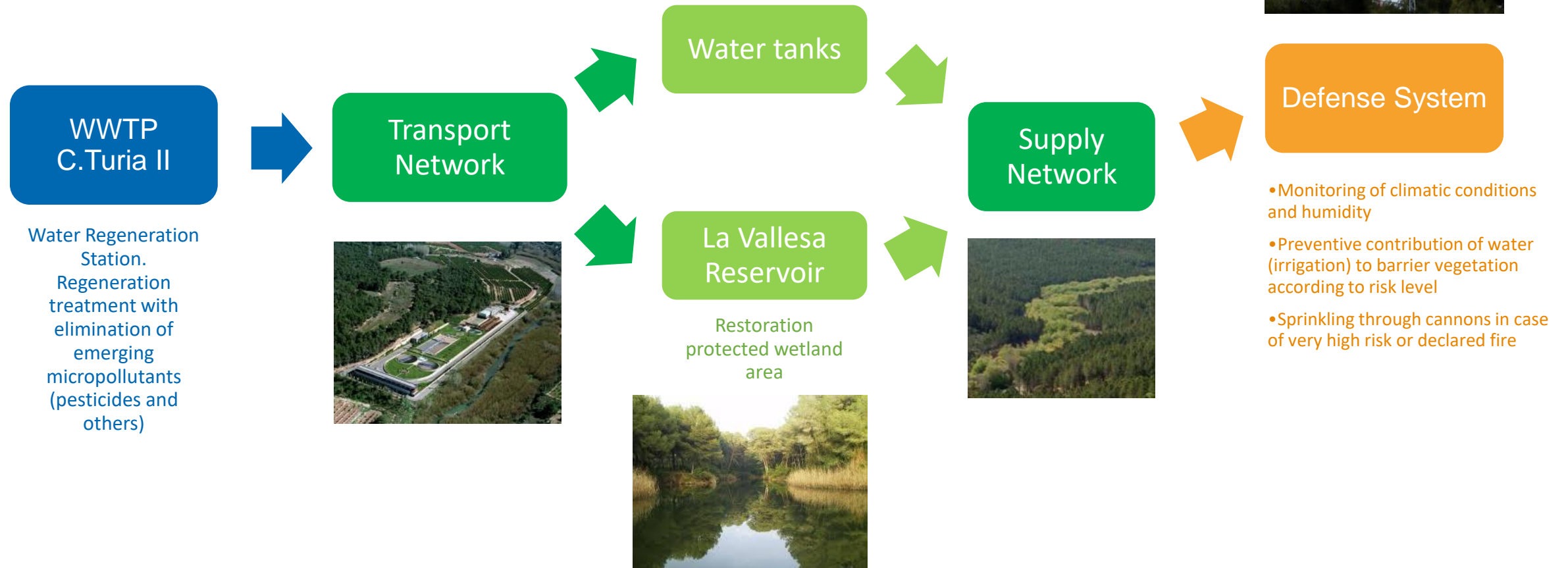


Ribera-roja de Túria y Paterna (Valencia)



Parque Natural del Túria / Forest urban interface

Outline Proposed Solution





What is the European Commission looking for with these projects?

1. Innovative

2. Participative

3. Measurable

4. Transferable and scalable

5. Of good quality

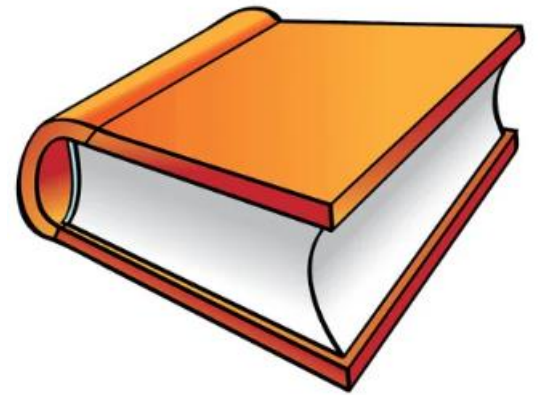


CLASSICAL PROJECT MANAGEMENT METHODOLOGY

EXECUTION PROJECT

1. Memory report
2. Detailed budget
3. Work plan
4. Technical specifications
5. Health and safety studies
6. Graphic documentation

There is no room for **innovation** in the project development



CLASSICAL PROJECT: LEGO PROJECT



CLASSICAL PROJECT: LEGO PROJECT



The success depends on your skills in order to follow correctly the instructions

.... and the quality of the instructions ...

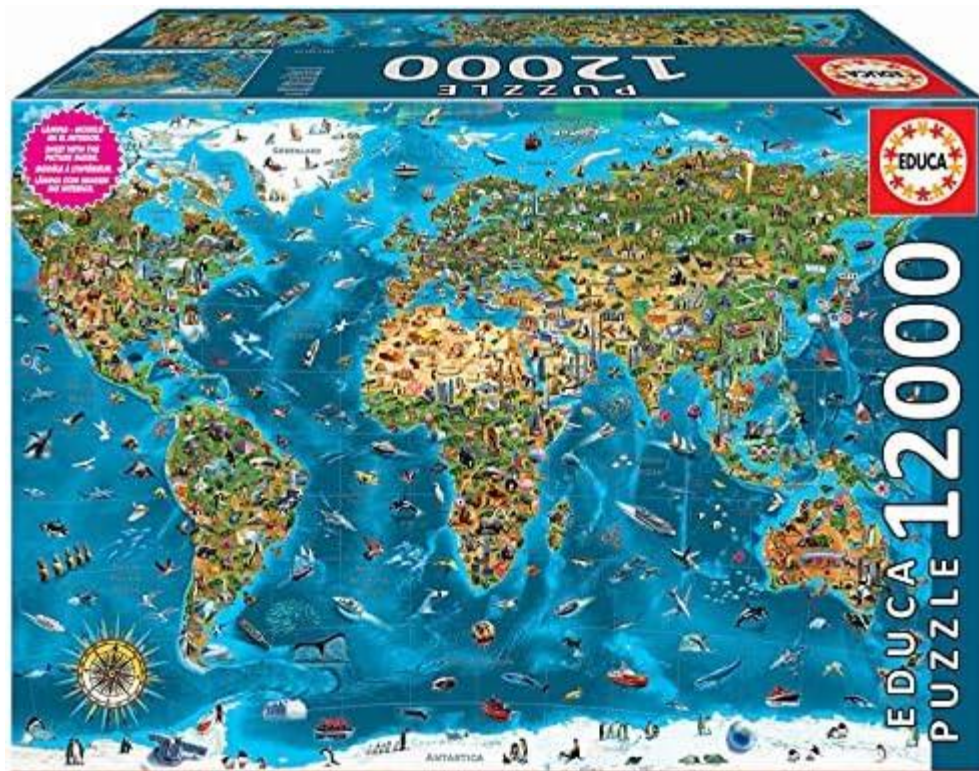
Projects with a significant load of innovation bring us
UNCERTAINTY

~~EXECUTION PROJECT~~ → **BUSINESS CASE**



Management
methodology

INNOVATIVE PROJECT: PUZZLE PROJECT



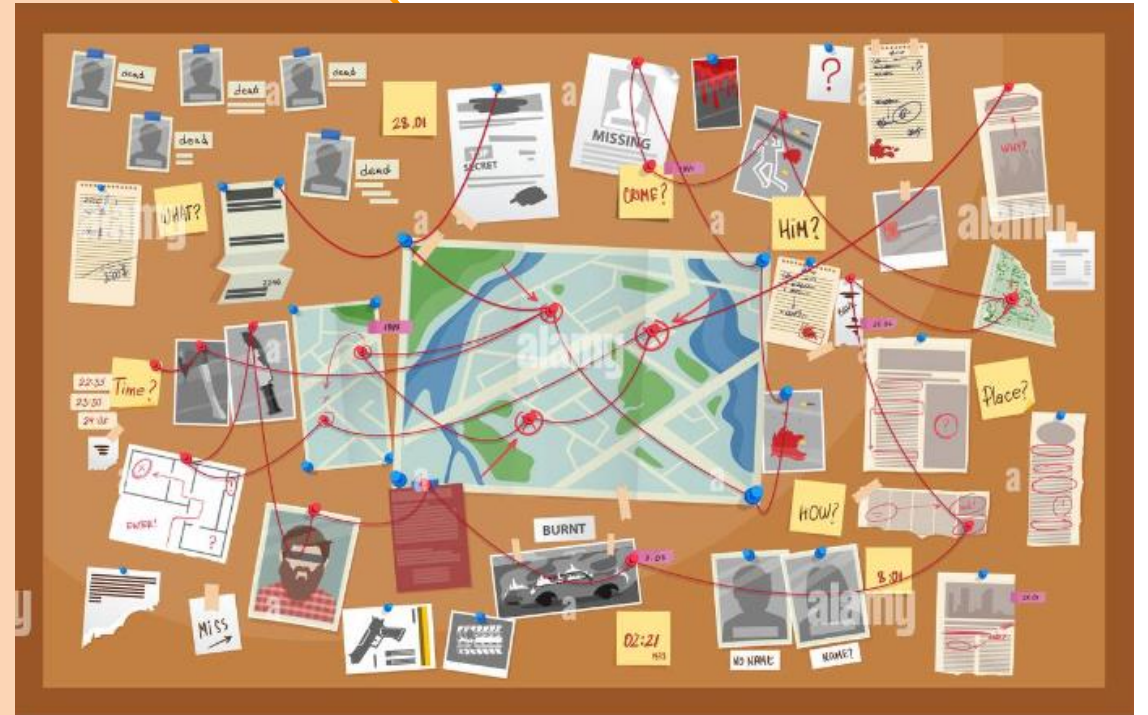
Execution strategy

INITIATION PHASE

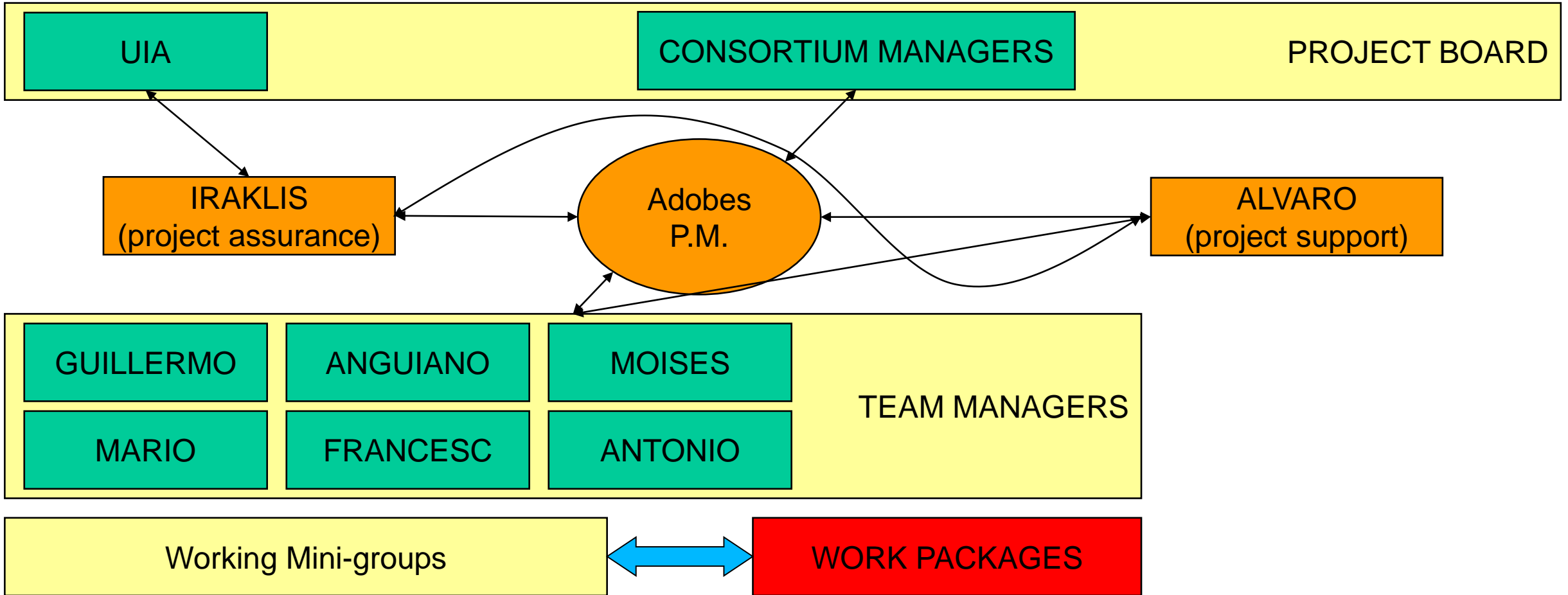
BUSINESS CASE → PROJECT INITIATION DOCUMENT

PID contents:

- Grant form.
- Project Management Plan
- Monitoring Plan
- Communication management plan
- Cost management plan
- Risk Management Approach
- Daily Log
- Issue Register
- Exception Register
- Steering Committee Meetings Register
- Measurement indicators in the evolution of the project.
- Quality Register



GUARDIAN PROJECT MANAGEMENT SCHEM



FOCUS ON THE PROJECT

Project Evolution Indicators

1. COST
2. TIME
3. QUALITY
4. SCOPE
5. BENEFITS
6. RISK

TOLERANCES Adapted to the
ROLE of
each member of the project

**ALWAYS ANTICIPATE
PROBLEMS**



- The Urban Authority has to understand that it must allocate **real human resources** to the project.
- You can't outsource all the management of a project.
- Certain people from the urban authority are going to be essential in the project. **They must be involved at all costs** (municipality advocacy, treasury, intervention, ...).
- Work less and think more. Be productive: **FOCUS ON THE PROJECT.**
- **Ensure RISK control and contingency formulas.**
- **Adapt funding to spending schedule.**
- Never forget that a chain is only as weak as its weakest link.

- **SOFT SKILLS.**

my TIPS



proyectoguardian.com
vadobes@ribarroja.es

Thank you

A white circular arrow graphic on a dark blue background. The arrow is a thick white line that forms a circle with a small gap at the top. Inside the circle, the text "Q&A" is written in a white, sans-serif font. The arrow starts at the top right, goes clockwise, and ends at the top left, with a small arrowhead pointing towards the top left.

Q&A



#EUICall3

What is the likelihood that you will apply for Call 3?



#EUIcall3

Which topic are you considering for your application: Energy transition or Technology in the city?



#EUIcall3

On a scale of 1 to 5, how familiar are you with the application process ?

The background features abstract, thick lines in teal and dark blue. In the top right, a teal line descends vertically, then turns right horizontally, then descends vertically again, and finally turns right horizontally into a dark blue line. In the bottom left, a dark blue line descends vertically, then turns right horizontally, then descends vertically again, and finally turns right horizontally into a teal line. In the bottom center, a teal line descends vertically, then turns right horizontally, then descends vertically again, and finally turns right horizontally into a dark blue line. In the bottom right, a teal line descends vertically, then turns right horizontally, then descends vertically again, and finally turns right horizontally into a dark blue line.

Next steps for applicants

Call timeline

6 May 2024
Call opens

14 October 2024
Call closes
14:00 CEST

March 2025
Announcement
of selected projects

1st April 2025
Start of the
Initiation Phase

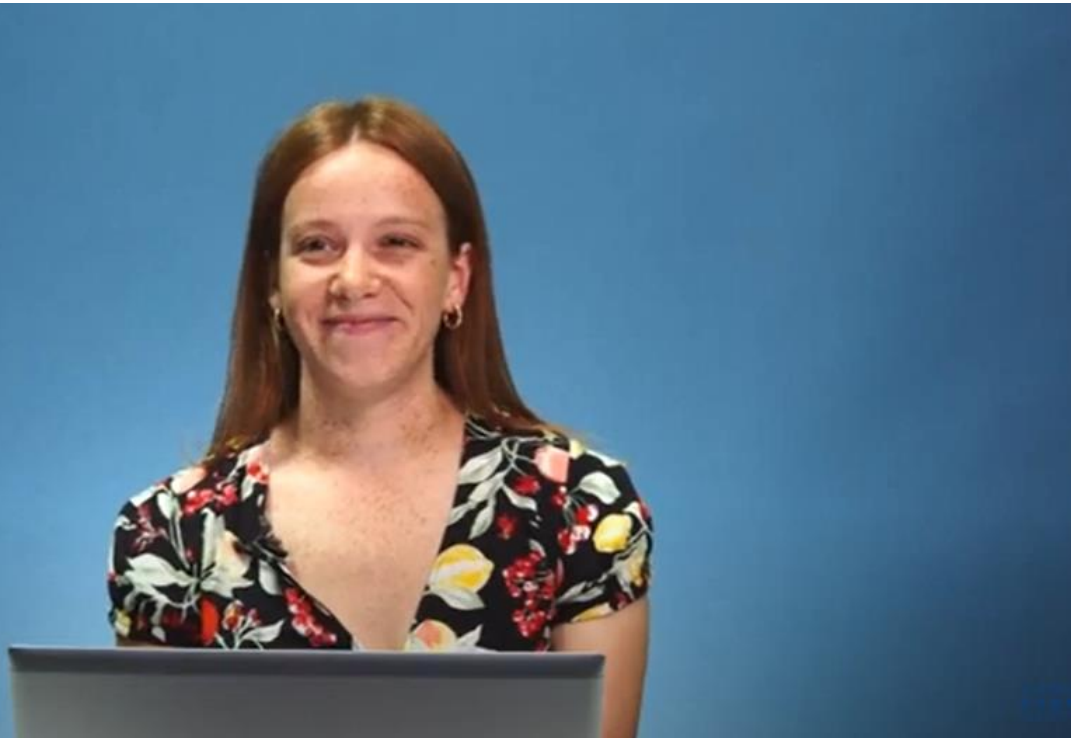
Where to find help

Thematic focus on 23 May 14.00 CEST



Where to find help

Online Q&A – Thursday with Innovative Actions
10.00 – 11.00 CEST



- Thursday, 6 June 2024
- Thursday, 20 June 2024
- Thursday, 4 July 2024
- Thursday, 18 July 2024
- Thursday, 29 August 2024
- Thursday, 12 September 2024
- Thursday, 26 September 2024
- Thursday, 10 October 2024

Where to find help

Online resources



EUROPEAN URBAN INITIATIVE

Help & contact

Portico

UAEU

My account

The Initiative

Innovative Actions

Look for funding

Build your capacities

Get inspired

News & Events

Home

Online guidance

Getting started

Where to start?

How to develop your project?

What are the application and selection processes?

What's the initiation phase?

Why transferring?

How to implement your project?

What are the eligible expenditures?

Why communication and capitalisation?

Where to find help

Call 2 videos



EUI-IA CALL 2 - Applicants Q&A | Financial aspects of the project implementation



European Urban Initiative
142 abonnés

S'abonner

👍 7



Partager

📄 Télécharger



Where to find help

In-person events



Applicant Seminars

- 13 June 2024 – Bucharest, Romania
- 27 June 2024 – Prague, Czech Republic

Application Form Workshop

- 10 September 2024 - Brussels

Where to find help

1 to 1 consultations



- 30 minutes online consultation
- registrations open in June
- priorities for cities and urban authorities

Where to find help

Urban Contact Points

Date	Country
8 May	Portugal
9 May	Slovakia
14 May	Denmark
14 May	Slovakia
15 May	Estonia
15 May	Austria
22 May	Czechia
23 May	France
29 May	Hungary
10 June	France
10 June	Poland





Co-funded by
the European Union

EUROPEAN URBAN INITIATIVE

Help & contact 

 Portico

 UAEU

 My account

The Initiative

Innovative Actions

Look for funding

Build your capacities

Get inspired

News & Events

 Home

Check the relevance and readiness of your project

Is your city eligible? Is your idea relevant? Is your project appropriately addressing the urban challenges you are facing? Are you ready for applying to EUI-IA 1st call for proposals?



portico

The gateway to urban learning

We connect urban actors with knowledge, people and initiatives to achieve sustainable urban development in Europe.

What are you looking for?





portico

Urban Matchmaker

The Urban Matchmaker is a tool that helps cities match with each other to share knowledge & expertise

City to City exchange



Find a peer city to share practices

[Scroll to this section](#)

Innovative Action



Find a partner or learn from an EUI-funded project

[Scroll to this section](#)

**All you need to know
is available here**



A white circular arrow graphic with the text "Q&A" in the center, set against a dark blue background. The arrow is a thick white line that forms a circle, with two arrowheads pointing in a clockwise direction. The text "Q&A" is centered within the circle in a white, sans-serif font. The background is a solid dark blue color.

Q&A

The background features abstract, thick lines in teal and dark blue. In the top right, a teal line descends vertically, then turns left horizontally, then descends vertically again, and finally turns right horizontally into a dark blue line. In the bottom left, a dark blue line descends vertically, then turns right horizontally into a teal line that forms a semi-circle. In the bottom center, a teal line forms a rounded U-shape. In the bottom right, a teal line descends vertically, then turns right horizontally into a dark blue line.

Wrap-up

Follow us:

EUROPEAN U R B A N INITIATIVE



Register to [our newsletter](#)

www.urban-initiative.eu

